



 Mitsubishi Australia Ltd.

---

CORPORATE PROFILE

---

# More than 60 years of shared value



Takashi Horie

Mitsubishi Australia Ltd. is a wholly owned subsidiary of Mitsubishi Corporation, Japan's largest trading and investment house. We have proudly operated in Australia since 1956. Drawing on Mitsubishi Corporation's global reach and experience, we have actively added economic, societal and environmental value to Australia and beyond for more than 60 years.

The world is rapidly changing and new business opportunities and challenges are created every day. We are excited to be operating in such an environment. Mitsubishi Corporation constantly seeks to capitalise on new opportunities to ensure its business remains agile and resilient. With Mitsubishi Australia's strong team and broad industry expertise, we aim to actively seek out new opportunities and grow in partnership with the Australian community.

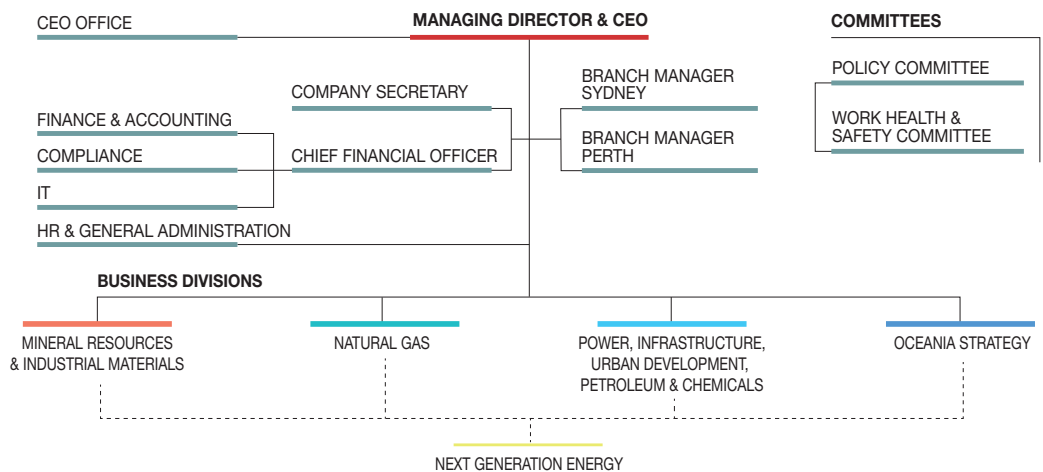
We are grateful for the opportunities that Australia provides us. Together with a number of associated Mitsubishi Corporation companies, we will continue to challenge ourselves to break new ground in a variety of fields, such as energy transformation as we shift to a net-zero world, and will strive to make a positive impact on the lives of future generations.

In my role as Managing Director of Mitsubishi Australia Ltd., I am guided by Mitsubishi Corporation's Three Corporate Principles - Corporate Responsibility to Society; Integrity and Fairness; and Global Understanding through Business. I am committed to working with our employees, business partners, customers and the local community to continue to create economic, societal and environmental value for Australia while also further strengthening the Australia-Japan relationship.

## Takashi Horie

Managing Director and CEO  
Mitsubishi Australia Ltd.

## Organisation



## Corporate Principles

### Three Corporate Principles

#### Corporate Responsibility to Society "Shoki Hoko"

Strive to enrich society, both materially and spiritually, while contributing towards the preservation of the global environment.

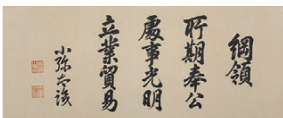
#### Integrity and Fairness "Shoji Komei"

Maintain principles of transparency and openness conducting business with integrity and fairness.

#### Global Understanding Through Business "Ritsugyo Boeki"

Expand business, based on an all encompassing global perspective.

The modern day interpretation of the Three Corporate Principles, as agreed on at the Mitsubishi Kinyokai meeting of the companies that constitute the so-called Mitsubishi group in January 2001.

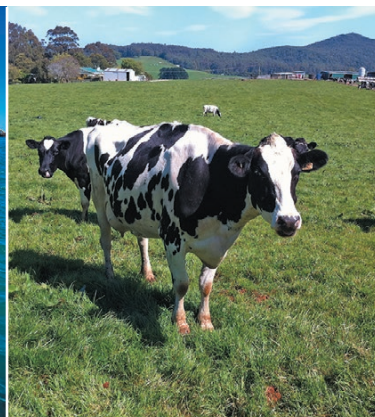
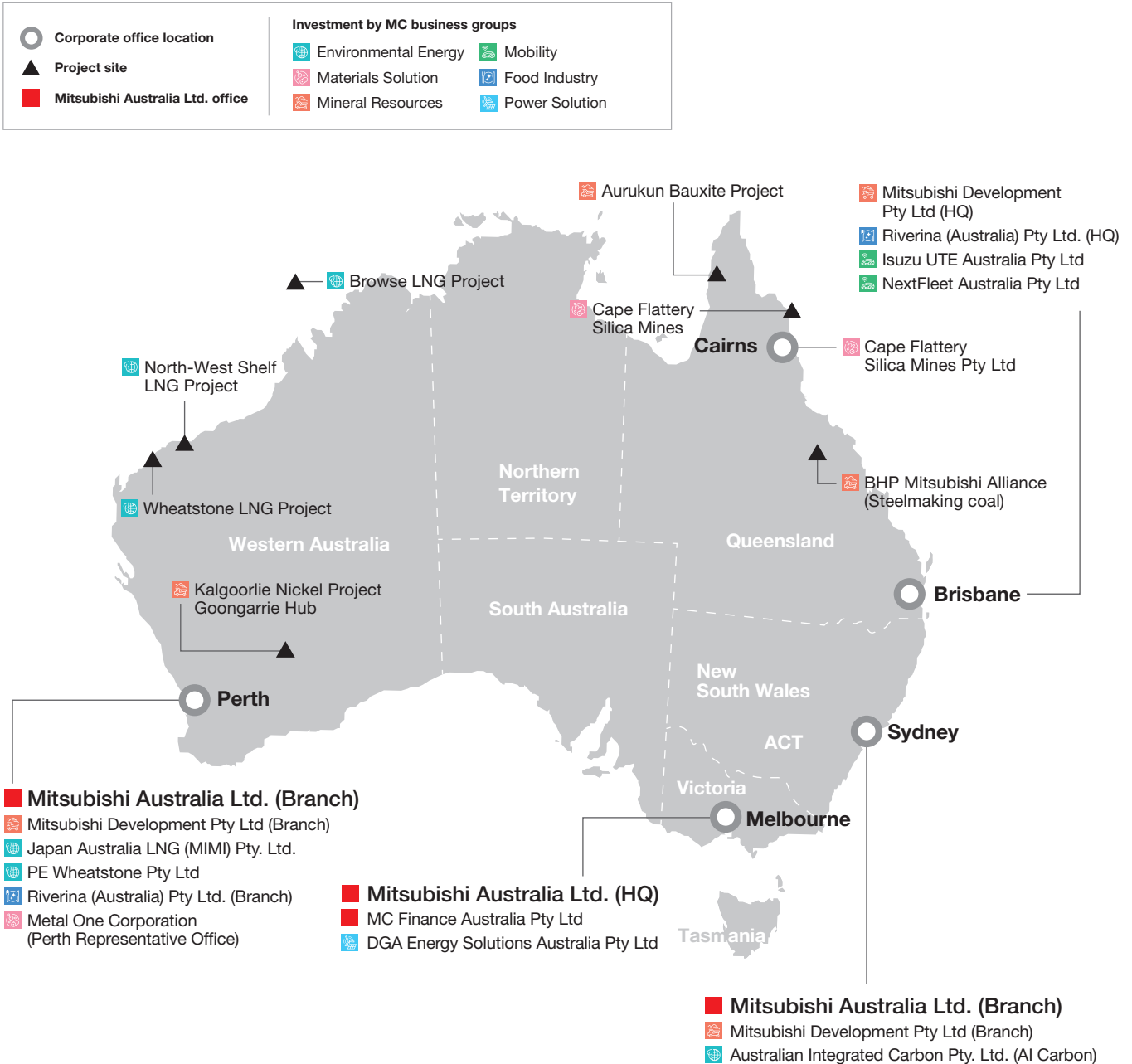


Mitsubishi Australia Ltd. acknowledges the Traditional Custodians of the land on which we operate and live and recognises their continuing connection to land, waterways, culture and community. We pay our respects to their Elders past, present and emerging.

Mitsubishi Australia Ltd. supports the Uluru Statement from the Heart.

# Mitsubishi Corporation subsidiaries in Australia

Mitsubishi Corporation's business in Australia spans across various industries including natural gas, mineral resources, power, food, industrial materials, and automotive & mobility. Mitsubishi Australia Ltd. plays an important role in assisting Mitsubishi Corporation and group companies with new business development in areas such as decarbonisation, agri-tech, urban development, critical minerals, renewable energy, hydrogen and other alternative energy.





# Mitsubishi Corporation's investment in Australia

## Environmental Energy Group

Japan Australia LNG Pty. Ltd. (MIMI)	Investment for North West Shelf and Browse LNG projects
PE Wheatstone Pty Ltd	Investment for Wheatstone LNG project
Australian Integrated Carbon Pty. Ltd. (AI Carbon)	Development and sales of carbon credits

## Materials Solution Group

Cape Flattery Silica Mines Pty Ltd	Mining and export of silica sand
Metal One Corporation (Perth Representative Office)	Integrated Steel Trading (Representative only)

## Mineral Resources Group

Mitsubishi Development Pty Ltd	Investment and operations in steelmaking coal business, and development of bauxite project
--------------------------------	--

## Mobility Group

Isuzu UTE Australia Pty Ltd	Import and distribution of Utilities and SUVs in Australia with a network of more than 100 dealerships nationwide
NextFleet Australia Pty Ltd	Fleet management and mobility solutions company

## Food Industry Group

Riverina (Australia) Pty Ltd.	Manufacturing and sales of stockfeed, grain accumulation and export
-------------------------------	---

## Power Solution Group

DGA Energy Solutions Australia Pty Ltd	Renewable energy and green hydrogen related business development
--	--



# Our approach to sustainability

Mitsubishi Australia Ltd. aims to add societal and environmental value by addressing key sustainability goals through our business activities. To this end, Mitsubishi Australia Ltd. is guided by Mitsubishi Corporation's "Materiality" policy which defines what it considers to be the most crucial societal challenges that the company as a whole needs to address.

## Mitsubishi Corporation's Materiality Linked to United Nations Sustainable Development Goals (SDGs)

Realising a Carbon Neutral Society and Striving to Enrich Society Both Materially and Spiritually	Striving to Serve as a Platform for Generating Triple-Value Growth
<p><b>Contributing to Decarbonised Societies</b></p>	<p><b>Fostering Vibrant Workplaces That Maximise the Potential of a Diverse Workforce</b></p>
<p><b>Conserving and Effectively Utilising Natural Capital</b></p>	<p><b>Realising a Highly Transparent and Flexible Organization</b></p>
<p><b>Promoting Stable, Sustainable Societies and Lifestyles</b></p>	<p>We work closely with our local community partners to raise awareness among our staff on challenges our society faces today. (Photo with Clontarf Academy students)</p>
<p><b>Utilising Innovation to Address Societal Needs</b></p>	
<p><b>Addressing Regional Issues and Growing Together with Local Communities</b></p>	
<p><b>Respecting Human Rights in Our Business Operations</b></p>	

## Sustainability in practice in Australia

### Contributing to Decarbonised Societies



In support of Mitsubishi Corporation's commitment to achieving net zero by 2050, we are actively seeking innovative solutions which will help Mitsubishi Corporation and society more broadly to decarbonise. Supporting start-up companies with cutting-edge decarbonisation technology is one example of our efforts in this area. We are also actively pursuing new opportunities in alternative energy such as renewables, hydrogen and biofuels.

### Growing Together with Local Communities



Supporting education for First Nations children is one of the key focusses for our social contribution programs. We provide funding to partner organisations helping improve literacy in remote communities, offering comprehensive support for remote Indigenous students studying in major cities, and motivating young students to complete Year 12 education. Many of Mitsubishi Corporation's business activities are based in remote regional centres, and we are committed to supporting these communities and their regional issues.

### Conserving and Effectively Utilising Natural Capital



Since 2012 Mitsubishi Corporation has provided the funding and volunteers for Earthwatch and leading Australian scientists to undertake research in the Great Barrier Reef as a part of the Global Coral Reef Conservation Project. The research team studied causes of the Black Band Disease during Phase 1 (2012-2018) and impacts of macroalgae removal on coral reef during Phase 2 (2019-2021). Currently in Phase 3, we are exploring alternative coral restoration methods while continuing removal of macroalgae. We continue to support this crucial research for the health and restoration of the reef.

### Growing Together with Local Communities



Mitsubishi Corporation subsidiary companies work closely with local communities. Cape Flattery Silica Mines (CFSM), a leading producer of world class silica sand, is one example. Maintaining a strong relationship and bond with the Hope Vale Traditional Custodians of the land mined is extremely important to the business. In addition to creating employment opportunities for the community since the 1970s, CFSM also provides various community support such as an academic bursary, apprenticeships and traineeships for non-mining sectors, as well as maintenance of a community facility developed by CFSM.



## Contact

### Head Office

---

### Melbourne

Level 35, Rialto North Tower,  
525 Collins Street, Melbourne,  
VIC 3000, Australia

Telephone:

1300 793 528 (within Australia)

+61(0)3 8526 2582 (from overseas)

<http://www.mitsubishi.com/au/en/>

### Other Offices

---

### Sydney

Suite 3503, Level 35 Grosvenor Place,  
225 George Street, Sydney,  
NSW 2000, Australia

Telephone: +61(0)2 8241 2700

### Perth

Level 18, 2 The Esplanade, Perth,  
WA 6000, Australia

Telephone: +61(0)8 6263 5300

