

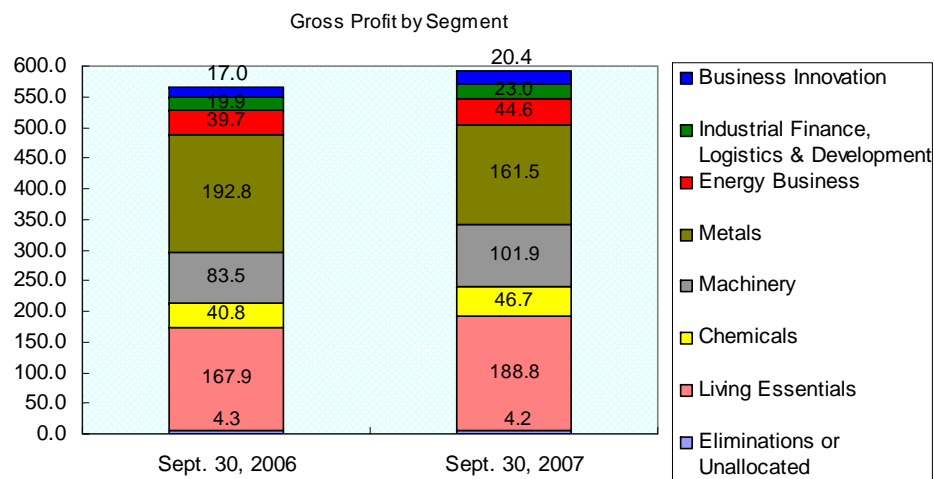
FY2008 Interim Results - Supplement -

October 31, 2007

Mitsubishi Corporation

(Billion Yen)	Six months ended Sept.30,2006	Six months ended Sept.30,2007	Increase or decrease	%
Operating Transactions	9,835.7	11,072.6	1,236.9	13%
Gross profit	565.9	591.1	25.2	4%
Operating income	205.0	190.1	-14.9	-7%
Consolidated net income	234.8	237.7	2.9	1%
Core earnings	328.3	317.1	-11.2	-3%

(Billion Yen)

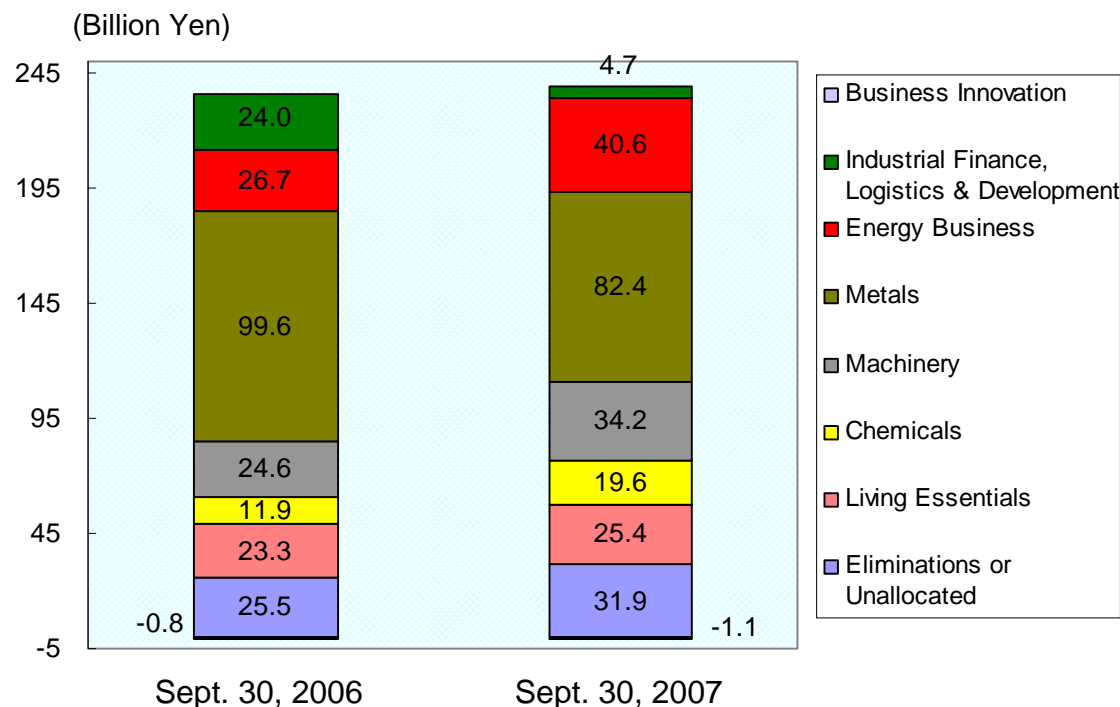


Historical record (Interim period)

- **Operating transactions...Historical High**
(The previous highest was 9.9 trillion yen in Sept. 1990)
- **Gross profit...Historical high**
(The previous highest was 565.9 billion yen in Sept. 2006)
- **Operating income...Second highest**
(The highest was 205.0 billion yen in Sept. 2006)
- **Consolidated net income...Historical high**
(The previous highest was 234.8 billion yen in Sept. 2006)
- **Core earnings...Second highest**
(The highest was 328.3 billion yen in Sept. 2006)

Year-on-Year Changes of Consolidated Net Income (by business segment)

October 31, 2007
Mitsubishi Corporation



Reasons for changes by business segment

Business Innovation (- 0.3 billion yen)

... Reflects absence of gains on sale of shares recorded in previous fiscal year, etc.

Industrial Finance, Logistics & Development (- 80%)

... Reflects absence of gain on sale of Diamond City shares recorded in the previous fiscal year, and increase due to absence of foreign currency-related losses at finance subsidiary. Other businesses were generally strong.

Energy Business (+ 52%)

... Reflects increase in gross profit at overseas resource-related subsidiaries due to rising crude oil prices and increased transactions as well as gain on sale of shares in Sakhalin Energy Investment.

Metals (- 17%)

... Decrease in earnings due to lower sales price at Australian coking coal subsidiary.

Machinery (+ 39%)

... Increase in earnings due to new consolidations in overseas IPP business, as well as recovery of auto market in Asia. Also reflects foreign exchange rate movements.

Chemicals (+ 65%)

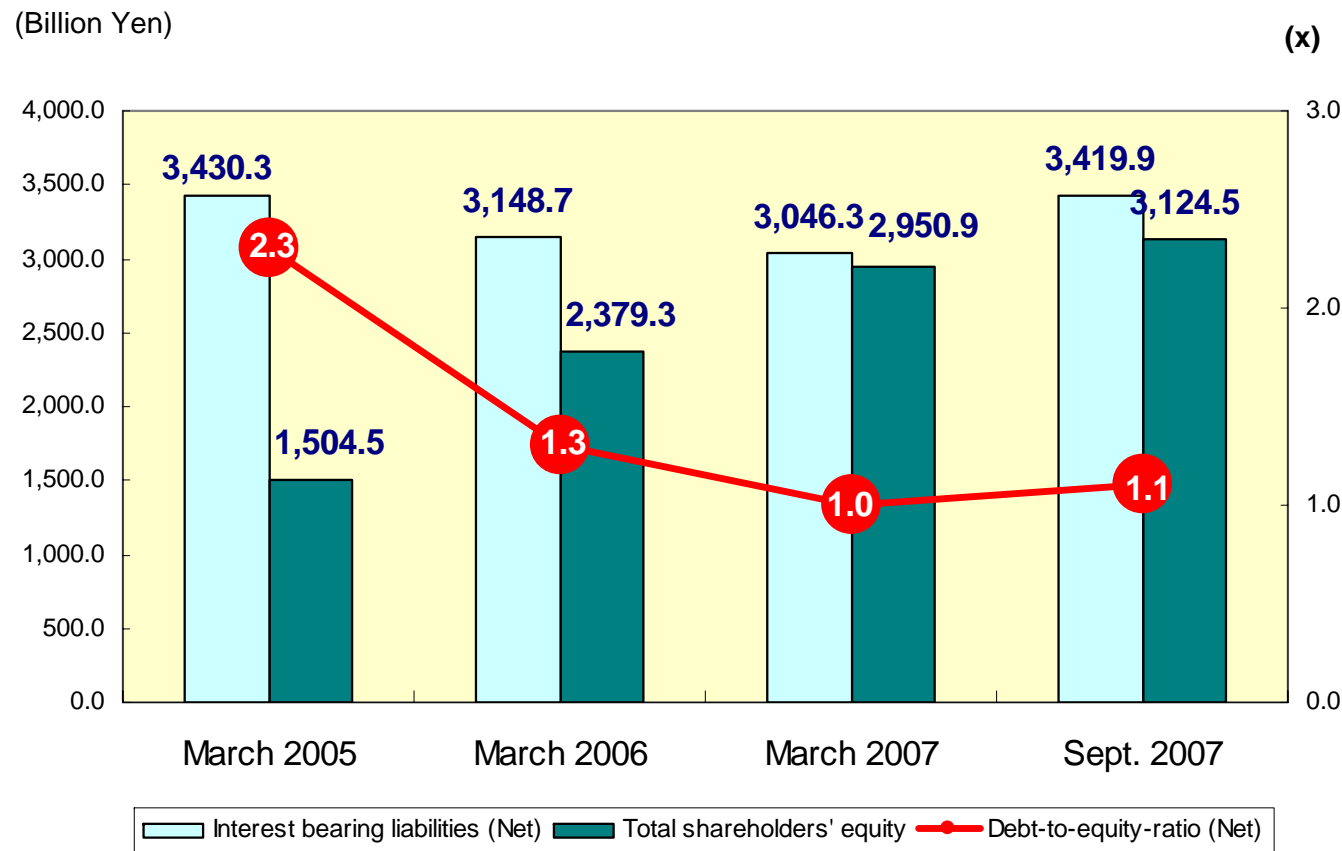
... Increase due to strong transactions at overseas subsidiaries and tax benefits from higher equity interest in petrochemical business-related company.

Living Essentials (+ 9%)

... Despite absence of fiscal 2007 gains on sale of shares, higher earnings were due to strong results in food-related businesses.

Resources Prices

	Sept. 2006	Sept. 2007	Increase or decrease
Crude oil (Dubai) (\$/BBL)	65.3	67.4	2.1
Copper (\$/MT)	7,440	7,677	237
Aluminum (\$/MT)	2,568	2,654	86



- Reasons for changes in shareholders' equity (Compared to March 31, 2007)**
- 1. Increase in retained earnings (190.4 billion yen)**
...effect of higher interim net income
 - 2. Increase in net unrealized gains on securities available for sale (54.6 billion yen)**
...Increase in unrealized gains on listed overseas shares
 - 3. Improvement in foreign currency translation adjustments (59.4 billion yen)**
...effect of weaker yen against Australian dollar, euro and other currencies
- 3. Decrease due to acquisition of treasury stock (-150.1 billion yen)**

Outlook for the Fiscal Year Ending March 2008

October 31, 2007
Mitsubishi Corporation

Forward-Looking Statements

The statements included in this release contain forward-looking statements about Mitsubishi Corporation's future plans, strategies, beliefs and performance that are not historical facts. Such statements are based on the company's assumptions and beliefs in light of competitive, financial and economic data currently available and are subject to a number of risks, uncertainties and assumptions.

Accordingly, Mitsubishi Corporation wishes to caution readers that actual results may differ materially from those projected in this release.

(Billion Yen)	FY2007 (a)	Outlook for FY2008 (Original forecast of April 27, 2007) (b)	Outlook for FY2008 (revised) (c)	Change from Original forecast (c)-(b)
Operating transactions	20,516.3	19,500.0	22,000.0	2,500.0
Gross profit	1,148.1	1,180.0	1,220.0	40.0
Operating income	412.1	385.0	385.0	0
Consolidated net income	415.9	400.0	430.0	30.0
Core earnings	679.5	615.0	650.0	35.0

Basic Assumptions for the FY2008 Outlook

	Result for the first half (a)	Assumptions for the second half (b)	Average for the year (c)	Original assumptions of April 2007 (d)	Increase or decrease (c)-(d)	Sensitivities to consolidated net income
Foreign Exchange (YEN/ \$)	119.4	115.0	117.2	115.0	2.2	±1 yen per 1 US\$ ±2.4 billion yen
Yen Interest (%)TIBOR	0.73	1.10	0.92	0.90	0.02	Majority of the effect of interest rates rising is offset with an increase in operating and investment profits. However, if the interest rates increase rapidly, the effect temporarily occurs.
US\$ Interest (%)LIBOR	5.40	5.41	5.41	5.40	0.01	
Crude oil prices (\$ /BBL) (Dubai)	67.4	70.8	69.1	57.0	12.1	±US\$1 per barrel ±1.0 billion yen
Copper (\$ /MT)	7,677	7,055	7,366	6,724	642	±US\$100 per MT ±0.8 billion yen
Aluminum (\$ /MT)	2,654	2,400	2,527	2,700	-173	± US\$100 per MT ± 1.0 billion yen