

**CORPORATE BROCHURE 2025**

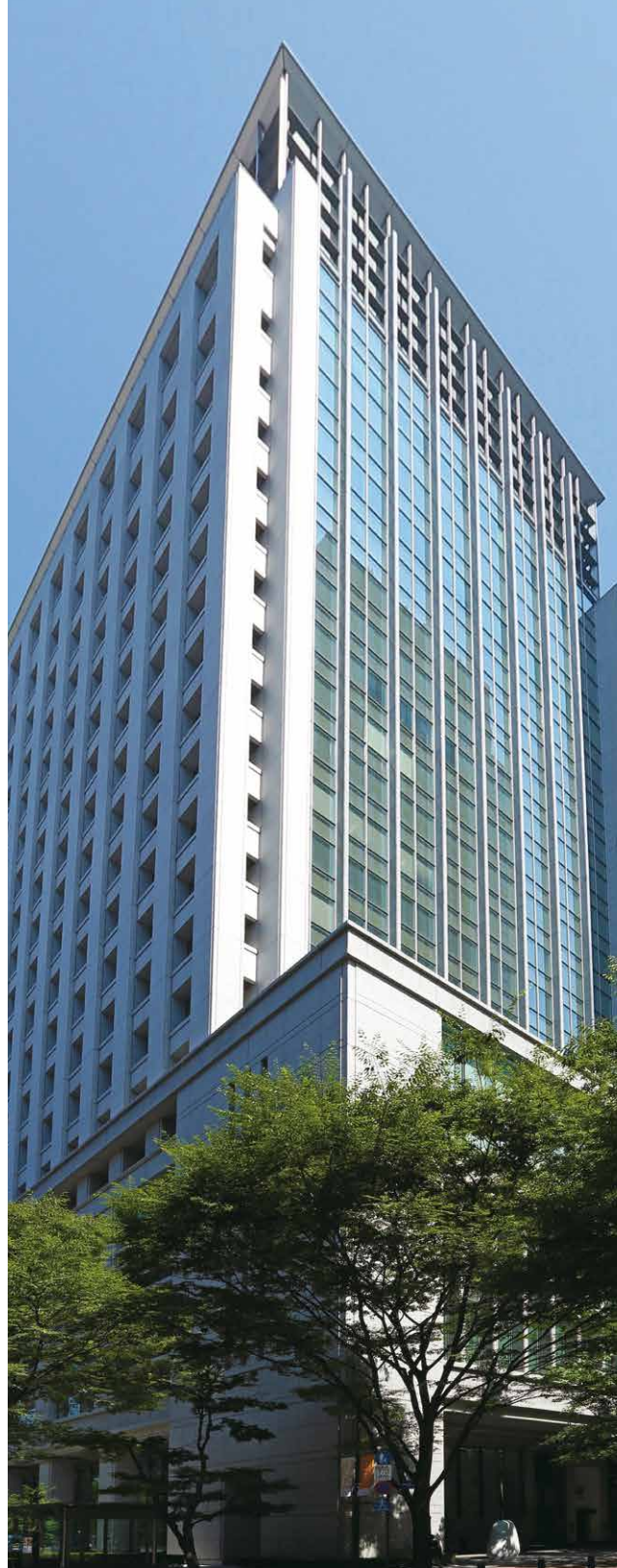
ENGLISH

Thinking of one, of all.  **Mitsubishi Corporation**

# Contents

Mitsubishi Corporation 2025

Introduction	2
Corporate Philosophy	3
Corporate History	4
Organizational Structure	5
Global Network (Countries and Regions)	6
Introduction to Business Groups	
Environmental Energy Group	8
Materials Solution Group	10
Mineral Resources Group	12
Urban Development & Infrastructure Group	14
Mobility Group	16
Food Industry Group	18
Smart-Life Creation Group	20
Power Solution Group	22
Sustainability	24
Corporate Governance and Internal Control System	26
Compliance	27
Crisis Management and Business Continuity Management on a Consolidated Basis	28
CSR (Corporate Social Responsibility)	29
Financial Highlights	30
Management/Corporate Data	32



## Mitsubishi Corporation

### Introduction

Mitsubishi Corporation (MC) is a global integrated business enterprise that develops and operates businesses together with its global network.

MC has eight Business Groups that operate across virtually every industry: Environmental Energy, Materials Solution, Mineral Resources, Urban Development & Infrastructure, Mobility, Food Industry, Smart-Life Creation and Power Solution. Through these eight Business Groups, MC's current activities have expanded far beyond its traditional trading operations to include project development, production and manufacturing operations, working in collaboration with our trusted partners around the globe.

With an unwavering commitment to conducting business with integrity and fairness, MC remains fully dedicated to growing its businesses while contributing to a prosperous society.