

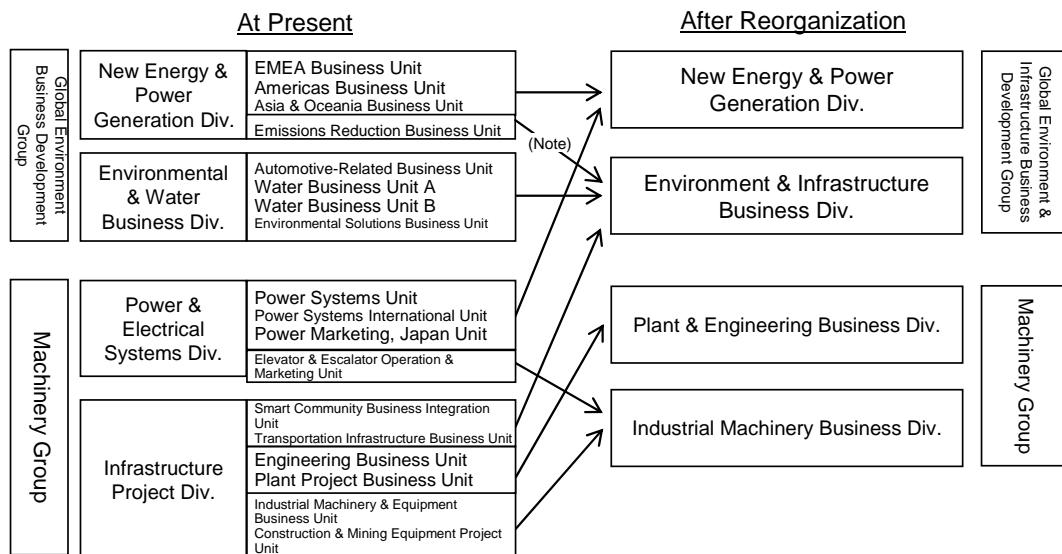
## FY2012 Reorganizations

Mitsubishi Corporation hereby announces that the reorganizations listed below will take place as of April 1, 2012, which was determined at the Board of Directors Meeting held on January 20, 2012.

### 1. Reorganization of the Global Environment Business Development Group and Machinery Group

#### (1) Outline

- ① The "Global Environment & Infrastructure Business Development Group" will be established, and the following business organizations will be integrated into this new Group: the Global Environmental Business Development Group, the Machinery Group's Power & Electrical Systems Division (excluding the Elevator & Escalator Operation & Marketing Unit), and a part of the Infrastructure Project Division. This new Group consists of the two divisions stated below.
  - a. The New Energy & Power Generation Division and Power & Electrical Systems Division (excluding the Elevator & Escalator Operation & Marketing Unit) will be combined and named "New Energy & Power Generation Division."
  - b. The Environmental & Water Business Division, Smart Community Business Integration Unit and Transportation Infrastructure Business Unit will be integrated into the "Environment & Infrastructure Business Division."
- ② Regarding the Machinery Group, the Power & Electrical Systems Division and Infrastructure Project Division will be reorganized into the "Plant & Engineering Business Division" and "Industrial Machinery Business Division", excluding the units transferred to the "Global Environment & Infrastructure Business Development Group".



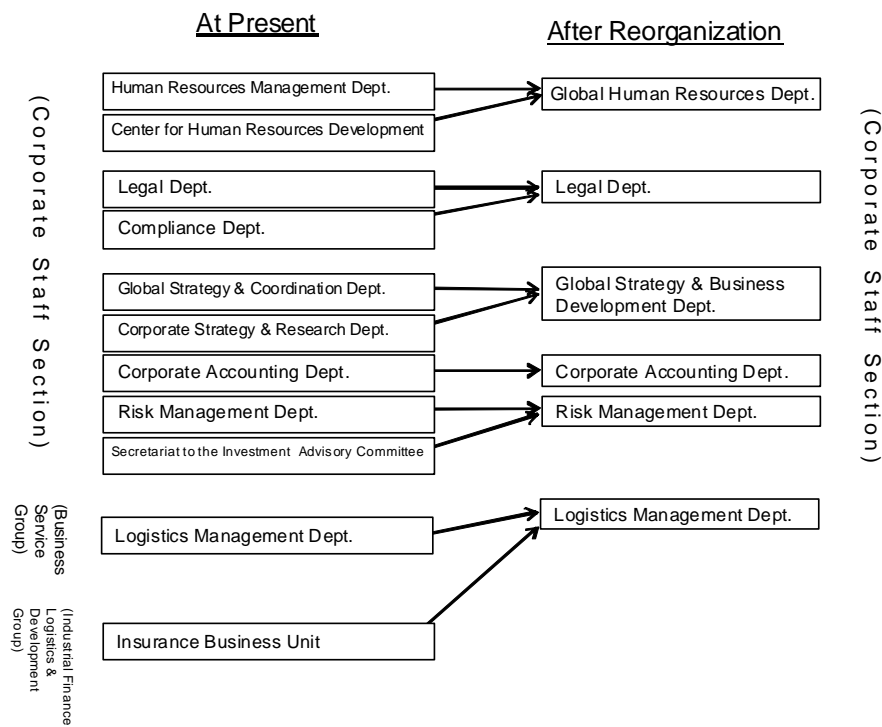
(Note) The current New Energy & Power Generation Division's Emissions Reduction Business Unit will be transferred to the "Environment & Infrastructure Business Div."

(2) Background Information

The Midterm Corporate Strategy 2012 designates infrastructure and global environment businesses as strategic domains, with the target of creating earnings drivers contributing to profits. In order to further strengthen these earnings drivers, we will need to integrate related businesses and improve our structures for implementation from the viewpoint of sharing information on business knowledge, effectively utilizing talent, enhancement of better customer relations, and so on. From this, the Global Environment Business Development Group and the infrastructure-related businesses of the Machinery Group will be unified.

2. Partial Integration of the Corporate Staff Section

From the perspective of improving the efficiency of organization management, the following pairs of organizations will be integrated with one another: the Human Resources Management Department and Center for Human Resources Development, the Legal Department and Compliance Department, the Global Strategy & Coordination Department and Corporate Strategy & Research Department, the Risk Management Department and Secretariat to the Investment Advisory Committee. The Business Service Group's Logistics Management Department, as well as the Industrial Finance, Logistics & Development Group's Insurance Business Unit will be integrated and transferred to the Corporate Staff Section. (The 19 departments, which comprise both the departments of the Corporate Staff Section and those directly under the President's jurisdiction, will be integrated into 14 departments.)



### 3. Change in Organizational Structure of the North American Region

#### (1) Outline

In regard to the North American region, Corporate Center functions, such as support for subsidiaries and affiliates, as well as the functions for mid to long term business development, will be transferred from Mitsubishi International Corporation (MIC) to a separate holding company, tentatively named, "Mitsubishi Corporation (Americas)", and hereinafter referred to as "MCA".

(Note) MIC, Mitsubishi Canada Ltd., and Mitsubishi de Mexico S.A. will be subsidiaries 100% owned by MCA.

#### (2) Background Information

- In the North American market, each Business Group is developing diversified business according to its own particular needs. Due to this, there is an increasing need to develop efficient corporate staff functions including investment management, as well as enhancing businesses development. To address this, MCA will be established as a holding company on a separate basis.
- Following the reorganization, MIC will encourage new appointments of local staff, make efforts to strengthen business know-how and seek to leverage growth in the North American market to aggressively expand business.
- MCA's company name is currently being submitted for approval from the Mitsubishi Corporate Name and Trademark Committee.

## Changes of Directors and Officers for FY2012

### I. Senior Vice President (“Shikko-Yakuin”)

#### 1. Newly appointed Senior Vice Presidents : April 1, 2012

Name	New	Present
NAKAYAMA, Shinichi	Senior Vice President, Division COO, Commodity Chemicals Div. B	Division COO, Commodity Chemicals Div. B
SANTO, Masaji	Senior Vice President, President, Mitsubishi Chile Limitada	President, Mitsubishi Chile Limitada
TAKADA, Mitsuyuki	Senior Vice President, Managing Director & CEO, Mitsubishi Australia Ltd. (Concurrently) Managing Director, Mitsubishi New Zealand Ltd.	Division COO, Steel Business Div. (Concurrently) General Manager, Steel Investment and Business Development Unit
KOYANAGI, Kenichi	Senior Vice President, Officer for E & P, Energy Business Group	General Manager, Energy Business Group CEO Office
SHIMOYAMA, Yoichi	Senior Vice President, General Manager, Finance Dept.	General Manager, Finance Dept.
MURAKOSHI, Akira	Senior Vice President, Division COO, General Merchandise Div.	Division COO, General Merchandise Div.

#### 2. Promoted Senior Vice Presidents : April 1, 2012

Name	New	Present
TANABE, Eiichi	Executive Vice President, Group CEO, Industrial Finance, Logistics & Development Group	Senior Vice President, General Manager, Industrial Finance, Logistics & Development Group CEO Office

### 3. Retiring of Officers and Directors : June 26, 2012

Name	New	Present
TAKEUCHI, Hideshi	Retiring	Executive Vice President
YASUDA, Shosuke	Retiring	Executive Vice President
FUJIMURA, Kiyoshi	Retiring	Executive Vice President
KUWABARA, Tetsuro	Retiring	Senior Vice President
YAMAGUCHI, Chikara	Retiring	Senior Vice President
ABE, Hironobu	Retiring	Senior Vice President

## II. Senior Vice President (“Riji”)

### 1. New Appointments : April 1, 2012

Name	Present Position (as of January, 20)
YAMADA, Kioi	Metal One Corporation
HATA, Noburo	General Manager, Business Service Group CEO Office
MASUDA, Osamu	Deputy Division COO, Environmental & Water Business Div.
IWAKI, Hiroto	Senior Assistant to Regional CEO, East Asia (Corporate)
KUWATA, Hiroshi	General Manager, Metals Group Administration Dept.
TOKUYAMA, Shimon	General Manager, Hanoi Representative Office
AOKI, Katsuhiko	Industrial Finance, Logistics & Development Group CEO Office
SHIMAZAKI, Toshihiro	General Manager, Smart Community Business Integration Unit, Infrastructure Project Div.
MURATA, Koichi	Senior Assistant to Group CEO (Real Estate Investment & Management), Industrial Finance, Logistics & Development Group
MURAYAMA, Masahiko	General Manager for Group Strategy Planning, Machinery Group
SUZUKI, Daiichiro	President, Mitsubishi Corporation Financial & Management Services (Japan) Ltd.
KUNOGI, Shizuho	SVP, Group Head for Energy Business, Mitsubishi International Corporation
YANAGAWA, Katsuhiko	Deputy General Manager, Kansai Branch

YOSHITAKE, Yutaka	General Manager, Corporate Auditors' Office
ISHIYAMA, Hirotsugu	Division COO, Ship & Aerospace Div.
ICHIKI, Nobuya	General Manager, Manila Branch
NAKAGAWA, Eiji	SVP, Group Head for Living Essentials, Mitsubishi International Corporation
MIYOSHI, Hiroshi	General Manager, Istanbul Main Branch

## 2. Retirees : June 30, 2012

Name	Present Position (as of January, 21)
HAYASHI, Ryoichi	Division COO, Carbon & LPG Business Div.
TAKI, Michio	Managing Director & CEO, Mitsubishi Australia Ltd.
FUJIWARA, Hirokane	General Manager for Human Resources, Living Essentials Group
NAKAJIMA, Michiya	Executive Vice President, Lithium Energy Japan Co., Ltd.
SASAKI, Shin	Division COO, Logistics Div.
TANIMURA, Shinya	General Manager, Machinery Group CEO Office
SAWADA, Takekazu	General Manager, Chugoku Branch
OGAWA, Katsuya	President, Mitsubishi Corporation Fashion Co., Ltd.
OTSUKA, Hidetoshi	General Manager, Tohoku Branch
IGARASHI, Tadahiko	Division COO, Functional Chemicals Div.

### III. Related Personnel Changes

(April 1, 2012)

New	Present	Name
Relieve of Position	Audits & Internal Control	Member of the Board, Executive Vice President, FUJIMURA, Kiyoshi
Global Strategy & Business Development, Logistics Management	Global Strategy & Business Development	Member of the Board, Senior Executive Vice President, NAKAHARA, Hideto
Senior Assistant to Corporate Functional Officer (Corporate Communications, Legal, Investment) (Concurrently) General Manager, Corporate Administration Dept., (Concurrently) General Manager, CSR & Environmental Affairs Dept.	Senior Assistant to Corporate Functional Officer (Corporate Communications, CSR & Environmental Affairs, Legal & Compliance, Investment) (Concurrently) General Manager, Corporate Administration Dept.	Senior Vice President, HIROTA, Yasuhito
General Manager, General Affairs Dept., Kansai Branch	General Manager, CSR & Environmental Affairs Dept.	AKITA, Minoru
Mitsubishi Corporation International (Europe) Plc. (Concurrently) Assistant to Regional CEO, Europe-CIS, Middle East& Africa	General Manager, General Affairs Dept., Kansai Branch	SHIMADA, Shinji
Assistant to Regional CEO, East Asia (Concurrently) Mitsubishi Corporation China Commerce Co., Ltd.	General Manager, Compliance Dept.	MURAHASHI, Toshiki
Mitsubishi International Corporation	General Manager, Center for Human Resources Development	IZUMIDA, Ryugo
General Manager, Global Strategy & Business Development Dept.	General Manager, Global Strategy & Coordination Dept.	Senior Vice President, KITAGAWA, Yasuhiko
Mitsubishi Corporation International (Europe) Plc. (Concurrently) General Manager for Europe-CIS, Middle East& Africa, Corporate Staff Section (Global Strategy & Business Development)	General Manager, Corporate Strategy & Research Dept.	KOWASE, Shinji
Risk Management Dept.	General Manager, Secretariat to the Investment Advisory Committee	SHIBA, Tomoyuki

General Manager, Logistics Management Dept.	Real Estate Investment & Management Unit	SUZUKI, Kazuyuki
Assistant to Corporate Functional Officer	General Manager, Administration Dept. of Corporate Section	TAKAISHI, Hideaki
Corporate Communications, Corporate Administration, Legal & Human Resources (Concurrently) Group CEO, Business Service Group, Chief Compliance Officer, CSR & Environmental Affairs Chief Information Officer, Motor Vehicle Business	Corporate Communications, Corporate Administration, Legal & Human Resources, Chief Compliance Officer, CSR & Environmental Affairs, Chief Information Officer, Motor Vehicle Business	Member of the Board, Senior Executive Vice President, NABESHIMA, Hideyuki
Senior Assistant to Group CEO, Business Service Group	Division COO, IT Service Business Div.	Senior Vice President, KAWAMURA, Yoshihiko
Division COO, IT Service Business Div.	Senior Executive Vice President, IT Frontier Corporation	KAKIHARA, Hiromichi
General Manager, Business Service Group CEO Office (Concurrently) Senior Assistant to CIO	General Manager, Business Service Group CEO Office	Senior Vice President, HATA, Noburo
General Manager, Information Systems Management Dept.	Metal One Corporation (Concurrently) Group CIO, Metals Group	KONDO, Shinichi
General Manager, Corporate Systems Development Dept.	General Manager, Corporate Systems Development Dept., MC Group IT Management Div.	HIGUCHI, Takeshi
Group CEO, Global Environment & Infrastructure Business Development Group	Group CEO, Global Environment Business Development Group	Executive Vice President, KOJIMA, Nobuaki
General Manager, Global Environment & Infrastructure Business Development Group CEO Office	Division COO, Environmental & Water Business Div.	Senior Vice President, ASAI, Keiichi
Division COO, New Energy & Power Generation Div.	Deputy Division COO, New Energy & Power Generation Div.	Senior Vice President, SAKUMA, Hiroshi
Deputy Division COO, New Energy & Power Generation Div.	General Manager, Power Systems Unit, Power & Electrical Systems Div.	NEMOTO, Koji
Division COO, Environment & Infrastructure Business Div.	Division COO, New Energy & Power Generation Div.	Senior Vice President, OGATA, Akinobu
Deputy Division COO, Environment & Infrastructure Business Div.	Deputy Division COO, Environmental & Water Business Div.	Senior Vice President, MASUDA, Osamu
General Manager, Global Environment & Infrastructure Business Development Group Administration Dept.	Division COO, MC Group IT Management Div.	KIZAKI, Hiroshi



Relieve of Position	Group CEO, Industrial Finance, Logistics & Development Group	Executive Vice President, TAKEUCHI, Hideshi
Group CEO, Industrial Finance, Logistics & Development Group	General Manager, Industrial Finance, Logistics & Development Group CEO Office	Executive Vice President, TANABE, Eiichi
General Manager, Industrial Finance, Logistics & Development Group CEO Office	Industrial Finance, Logistics & Development Group CEO Office	Senior Vice President, AOKI, Katsuhiko
Assistant to Group CEO, Industrial Finance, Logistics & Development Group	Division COO, Logistics Div. (Concurrently) General Manager, Logistics Business Unit	Senior Vice President, SASAKI, Shin
Division COO, Logistics Div.	General Manager, Logistics Management Dept.	Senior Vice President, NAKAMURA, Hiroyuki
Assistant to Group CEO, Energy Business Group	Senior Assistant to Group CEO, Energy Business Group	Senior Vice President, KUWABARA, Tetsuro
Senior Assistant to Group CEO, Energy Business Group	Officer for E & P, Energy Business Group	Senior Vice President, MAZAKI, Takahiro
Officer for E & P, Energy Business Group	General Manager, Energy Business Group CEO Office	Senior Vice President, KOYANAGI, Kenichi
General Manager, Energy Business Group CEO Office	General Manager for Human Resources, Energy Business Group	HASEGAWA, Fuminori
Assistant to Group CEO, Energy Business Group	Division COO, Carbon & LPG Business Div.	Senior Vice President, HAYASHI, Ryoichi
Division COO, Carbon & LPG Business Div.	General Manager, Moscow Office (Concurrently) Senior Assistant to Regional CEO, Europe-CIS, Middle East & Africa	Senior Vice President, NAKAZATO, Makoto
Division COO, Steel Business Div.	Division COO, Ferrous Raw Materials Div. (Concurrently) General Manager, MDP Unit	Senior Vice President, TOIDE, Iwao
Division COO, Ferrous Raw Materials Div.	General Manager, Iron Ore Business Unit, Ferrous Raw Materials Div.	TSUBONUMA, Noriyuki
Assistant to Group CEO, Machinery Group	General Manager, Machinery Group CEO Office	Senior Vice President, TANIMURA, Shinya
General Manager, Machinery Group CEO Office	General Manager for Group Strategy Planning, Machinery Group	Senior Vice President, MURAYAMA, Masahiko
Division COO, Plant & Engineering Business Div.	Division COO, Infrastructure Project Div.	Senior Vice President, OKAWA, Kazushi
Division COO, Industrial Machinery Business Div.	Executive Vice President, Tri Petch Isuzu Sales Co., Ltd.	TOMA, Keiichi

Deputy Division COO, Ship & Aerospace Div.	General Manager, Ship Unit, Ship & Aerospace Div.	MIYAZAKI, Takashi
Assistant to Corporate Functional Officer	General Manager, Machinery Group Administration Dept.	KAWAGUCHI, Kazuya
General Manager, Machinery Group Administration Dept.	Mitsubishi Motors Corporation	ICHOU, Mitsumasa
Assistant to Group CEO, Chemicals Group	Division COO, Functional Chemicals Div.	Senior Vice President, IGARASHI, Tadahiko
Division COO, Functional Chemicals Div.	General Manager, Chemicals Group CEO Office	HAGIWARA, Takeshi
General Manager, Chemicals Group CEO Office	General Manager, Fertilizer Unit, Commodity Chemicals Div. B	HONDA, Yasushi
Assistant to Group CEO, Living Essentials Group	General Manager for Human Resources, Living Essentials Group	Senior Vice President, FUJIWARA, Hirokane
General Manager for Human Resources, Living Essentials Group	General Manager, Processed Foods B Unit, Foods (Products) Div.	FURUYA, Toshiki
Relieve of Position	General Manager, Nagoya Branch	Executive Vice President, YASUDA, Shosuke
General Manager, Nagoya Branch	Group CEO, Business Service Group	Executive Vice President, ANDO, Ichiro
Assistant to Group CEO, Energy Business Group	General Manager, Tohoku Branch	Senior Vice President, OTSUKA, Hidetoshi
General Manager, Tohoku Branch	SVP, Group Head for Energy Business, Mitsubishi International Corporation	Senior Vice President, KUNOGI, Shizuho
Assistant to Group CEO, Living Essentials Group	General Manager, Chugoku Branch	Senior Vice President, SAWADA, Takekazu
General Manager, Chugoku Branch	SVP, Group Head for Living Essentials, Mitsubishi International Corporation	Senior Vice President, NAKAGAWA, Eiji
Assistant to Group CEO, Living Essentials Group	General Manager, Kyushu Branch	Senior Vice President, ABE, Hironobu
General Manager, Kyushu Branch	Division COO, Power & Electrical Systems Div.	Senior Vice President, KANESHIGE, Kuninori
Assistant to Div. COO, Foods (Products) Div.	General Manager, Niigata Branch	BABA, Muneo
General Manager, Niigata Branch	FOODLINK CORPORATION	HARA, Yuji
Assistant to Div. COO, Asset Finance & Business Development Div.	General Manager, Seattle Branch, Mitsubishi International Corporation	HIOKA, Mikiya

General Manager, Seattle Branch, Mitsubishi International Corporation	Mitsubishi Aircraft Corporation	KAWAZOE, Shinichiro
Housing & Construction Materials Unit, General Merchandise Div.	General Manager, Los Angeles Branch, Mitsubishi International Corporation	KINOSHITA, Koichi
General Manager, Los Angeles Branch, Mitsubishi International Corporation	General Manager, Houston Branch, Mitsubishi International Corporation	WATANABE, Ryuji
General Manager, Houston Branch, Mitsubishi International Corporation	Mitsubishi International Corporation	TAKASUGI, Tadashi
Metal One Corporation	General Manager, Chicago Branch, Mitsubishi International Corporation	HAYASHI, Tetsu
Executive Vice President, Mitsubishi International Corporation (Concurrently) General Manager, Chicago Branch, Mitsubishi International Corporation	Executive Vice President, Mitsubishi International Corporation	Senior Vice President, SUGIURA, Yasuyuki
SVP, Group Head for Energy Business, Mitsubishi International Corporation	General Manager, Petroleum Supply & Marketing Unit, Petroleum Business Div.	KURAHASHI, Masatsugu
SVP, Group Head for Machinery, Mitsubishi International Corporation	General Manager, Space & Integrated Defense Systems Unit, Ship & Aerospace Div.	TAKAHASHI, Joji
SVP, Group Head for Living Essentials, Mitsubishi International Corporation	General Manager, Sweetener & Starch Products Unit, Foods (Commodity) Div.	SATO, YU
Assistant to Div. COO, Foods (Commodity) Div.	President, Mitsubishi Argentina S.A.C.y R.	KOJIMA, Makoto
President, Mitsubishi Argentina S.A.C.y R.	Mitsubishi Corporation do Brasil, S.A.	KONO, Hiroyuki
Metal One Corporation	General Manager, Rio de Janeiro, Mitsubishi Corporation do Brasil, S.A.	INOUE, Sotaro
General Manager, Rio de Janeiro, Mitsubishi Corporation do Brasil, S.A.	MDP Unit, Ferrous Raw Materials Div.	KOBAYASHI, Naoki
Ship Unit, Ship & Aerospace Div.	Chairman, Mitsubishi Hellas A.E.E.	YAMAMOTO, Shuhei
Chairman, Mitsubishi Hellas A.E.E.	Houston Branch, Mitsubishi International Corporation	TANAKA, Toshinari
Industrial Machinery & Equipment Business Unit, Industrial Machinery Business Div.	General Manager, Belgrade Liaison Office	SUGINO, Toshiki
General Manager, Belgrade Liaison Office	Machinery Group CEO Office	KOJIMA, Naoki

General Manager, Moscow Office (Concurrently) Senior Assistant to Regional CEO, Europe-CIS, Middle East & Africa	SVP, Group Head for Machinery, Mitsubishi International Corporation	Senior Vice President, SAITO, Yu
Living Essentials Group CEO Office	President & CEO, Mitsubishi Corporation Trading Middle East F.Z.E.	KIYOSHIMA, Nobutaka
President & CEO, Mitsubishi Corporation Trading Middle East F.Z.E.	General Manager, Living Materials Unit, General Merchandise Div.	SUDO, Masaki
Energy Business Group CEO Office	General Manager, Al-Masat Al-Thalath Trading Co.(Mitsubishi) K.S.C.	OZAKI, Hideto
General Manager, Al-Masat Al-Thalath Trading Co.(Mitsubishi) K.S.C.	Energy Business Group CEO Office	NAKASHIMA, Hiroto
Power Systems International Unit, New Energy & Power Generation Div.	General Manager, Dubai Liaison Office	YOSHIMURA, Naoto
General Manager, Dubai Liaison Office	Global Strategy & Coordination Dept.	HOSHINO, Mamoru
Oman Project Unit, Natural Gas Business Div. B	General Manager, Muscat Liaison Office	SAITO, Toyonoshin
General Manager, Muscat Liaison Office	Oman Project Unit, Natural Gas Business Div. B	HIDAKA, Yusuke
Retirement	General Manager, Dakar Liaison Office (Concurrently) General Manager, Abidjan Liaison Office	KASAHARA, Masayuki
General Manager, Dakar Liaison Office (Concurrently) General Manager, Abidjan Liaison Office	Dakar Liaison Office	CHIBA, Satoshi
Assistant to Group CEO, Metals Group	Senior Vice President, Managing Director & CEO, Mitsubishi Australia Ltd. (Concurrently) Managing Director, Mitsubishi New Zealand Ltd.	Senior Vice President, TAKI, Michio
Managing Director & CEO, Mitsubishi Australia Ltd. (Concurrently) Managing Director, Mitsubishi New Zealand Ltd.	Division COO, Steel Business Div. (Concurrently) General Manager, Steel Investment and Business Development Unit	Senior Vice President, TAKADA, Mitsuyuki
Assistant to Group CEO, Metals Group	General Manager, Surabaya Representative Office	MASUDA, Hajime
General Manager, Surabaya Representative Office	Produce Unit, Foods (Commodity) Div.	YOSHIDA, Masahiko

General Manager, Global Real Estate Unit, Real Estate Development & Construction Div.	General Manager, Manila Branch	Senior Vice President, ICHIKI, Nobuya
General Manager, Manila Branch	General Manager, Asia & Oceania Business Unit, New Energy & Power Generation Div.	AMANO, Yoshio
Assistant to Group CEO, Machinery Group	Senior Assistant to Regional CEO, East Asia (East China) (Concurrently) President, Mitsubishi Corporation (Shanghai) Limited (Concurrently) General manager, Shanghai Office	Senior Vice President, YAMAGUCHI, Chikara
Senior Assistant to Regional CEO, East Asia (East China) (Concurrently) President, Mitsubishi Corporation (Shanghai) Limited (Concurrently) General manager, Shanghai Office	General Manager, Global Environment Business Development Group CEO Office	HIRAI, Yasuteru

**【Reference】 The Structure of Regional CEO & Chief Regional Officer**

(as of April 1, 2012)

	Name
Reginal CEO, North America	Executive Vice President, ONO, Seiei
Reginal CEO, Latin America	Executive Vice President, SHIRAKI, Seiji
Regional CEO, Europe-CIS, Middle East & Africa	Executive Vice President, TERADA, Tetsuro
Chief Regional Officer, Africa	Senior Vice President, HAYASHI, Haruki
Chief Regional Officer, Middle-East	Senior Vice President, YOSHIKAWA, Shigeaki
Regional CEO, East Asia	Senior Executive Vice President, YANO, Masahide
Regional CEO, Asia & Oceania	Executive Vice President, MIZUNO, Masayuki
Regional Strategy (Japan)	Executive Vice President, NAGAI, Yasuo

**(NOTES) Directors and Corporate Auditors decided at the General Meeting of Shareholders held on 26 June, 2012 will be announced later.**

**(END)**

## Reference

### 1. Responsibilities of Senior Executive Vice Presidents (as of April 1, 2012)

Name	Special Mission	Committees	Responsibilities
UEDA, Ryoichi(*)	MC Group Management Foundations Development	Chairman, Disclosure Committee	Chief Financial Officer
YANO, Masahide			Regional CEO, East Asia (Concurrently) President, Mitsubishi Corporation China Co., Ltd (Concurrently) General Manager, Beijing Office
NABESHIMA, Hideyuki	Chief Compliance Officer, CSR & Environmental Affairs, Chief Information Officer, Motor Vehicle Business	Chairman, Compliance Committee, Chairman, CSR & Environmental Affairs Committee, Chairman, Human Resources Development Committee	Corporate Communications, Corporate Administration, Legal & Human Resources (Concurrently) Group CEO, Business Service Group
NAKAHARA, Hideto		Chairman, Business Development Committee	Global Strategy & Business Development, Logistics Management

(\*) Additionally assigned to Chairman, the Investment Advisory Committee.

### 2. Senior Vice President (“Shikko-Yakuin”) : 56 Persons (as of April 1, 2012)

(NOTES) Excludes “Shikko-Yakuins” retiring as of the General Meeting of Shareholders in June.  
Positions are subject to change due to Personnel Changes in the future.

Title	Name	Position
President & Chief Executive Officer	KOBAYASHI, Ken	
Senior Executive Vice Presidents	UEDA, Ryoichi	Chief Financial Officer, MC Group Management Foundations Development
	YANO, Masahide	Regional CEO, East Asia (Concurrently) President, Mitsubishi Corporation China Co., Ltd (Concurrently) General Manager, Beijing Office
	NABESHIMA, Hideyuki	Corporate Communications, Corporate Administration, Legal & Human Resources

		(Concurrently) Group CEO, Business Service Group, Chief Compliance Officer, CSR & Environmental Affairs Chief Information Officer, Motor Vehicle Business
	NAKAHARA, Hideto	Global Strategy & Business Development, Logistics Management
Executive Vice Presidents	YANAI, Jun	Group CEO, Energy Business Group
	KINUKAWA, Jun	Group CEO, Metals Group
	KOMIYA, Osamu	Group CEO, Machinery Group
	ONO, Seiei	Regional CEO, North America (Concurrently) President, Mitsubishi International Corporation
	MIYAUCHI, Takahisa	Group CEO, Chemicals Group
	TERADA, Tetsuro	Regional CEO, Europe-CIS, Middle East & Africa (Concurrently) Managing Director, Mitsubishi Corporation International (Europe) Plc.
	KOJIMA, Nobuaki	Group CEO, Global Environment & Infrastructure Business Development Group
	MIZUNO, Masayuki	Regional CEO, Asia & Oceania (Concurrently) General Manager, Jakarta Representative Office
	SHIRAKI, Seiji	Regional CEO, Latin America
	MORIYAMA, Toru	Group CEO, Living Essentials Group
	NAGAI, Yasuo	Regional Strategy (Japan) (Concurrently) General Manager, Kansai Branch
	ANDO, Ichiro	General Manager, Nagoya Branch
	TANABE, Eiichi	Group CEO, Industrial Finance, Logistics & Development Group

Senior Vice Presidents	FUJIYAMA, Tomohiko	Senior Assistant to Corporate Functional Officer
	YOSHIKAWA, Shigeaki	Chief Regional Officer, Middle-East
	NARITA, Koichi	President, SIGMAXYZ Inc.
	NAKAGAKI, Keiichi	Chairman & Managing Director, Mitsubishi Corporation India Private Ltd.
	MAZAKI, Takahiro	Senior Assistant to Group CEO, Energy Business Group
	SAKATA, Yasuyuki	Senior Assistant to Regional CEO, East Asia (South China) (Concurrently) President, Mitsubishi Corporation (Hong Kong) Ltd.
	SUGIURA, Yasuyuki	Executive Vice President, Mitsubishi International Corporation (Concurrently) General Manager, Chicago Branch, Mitsubishi International Corporation
	UCHINO, Shuma	General Manager, Corporate Accounting Dept. (Concurrently) Senior Assistant to Corporate Functional Officer (MC Group Management Foundations Infrastructure Development)
	URABE, Toshimitsu	Senior Assistant to Corporate Functional Officer (Human Resources)
	CHOKKI, Morikazu	Division COO, Isuzu Business Div.
	ASAI, Keiichi	General Manager, Global Environment & Infrastructure Business Development Group CEO Office
	MIYAHARA, Ichiro	Division COO, Real Estate Development & Construction Div.
	SHIRAJI, Kozo	Division COO, Motor Vehicle Business Div.
	MATSUI, Shunichi	President, Mitsubishi International G.m.b.H. (Concurrently) Senior Assistant to Regional CEO, Europe-CIS, Middle East & Africa (North, Central & Eastern Europe) (Concurrently) General Manager, Berlin Branch, Mitsubishi International G.m.b.H. (Concurrently) General Manager, Frankfurt Branch, Mitsubishi International G.m.b.H.
	OBATA, Morinobu	Division COO, Textiles Div.
	TANI, Kenji	President, Mitsubishi Corporation Unimetals Ltd.
KAKIUCHI, Takehiko	General Manager, Living Essentials Group CEO Office (Concurrently) Division COO, Foods (Commodity) Div.	



OKAWA, Kazushi	Division COO, Plant & Engineering Business Div.
KAWAMURA, Yoshihiko	Senior Assistant to Group CEO, Business Service Group
HIROTA, Yasuhito	Senior Assistant to Corporate Functional Officer (Corporate Communications, Legal, Investment) (Concurrently) General Manager, Corporate Administration Dept., (Concurrently) General Manager, CSR & Environmental Affairs Dept.
HIRANO, Hajime	Division COO, Petroleum Business Div.
HIROMOTO, Yuichi	Division COO, Asset Finance & Business Development Div. (Concurrently) General Manager, Infrastructure & Project Finance Unit
NISHIURA, Kanji	Division COO, Non-Ferrous Metals Div.
KIYOSHI, Tatsuya	Division COO, Commodity Chemicals Div. A
MIZUNO, Kazuya	President & CEO, KOHJIN Co., Ltd.
KITAGAWA, Yasuhiko	General Manager, Global Strategy & Business Development Dept.
YASUNO, Kenji	General Manager, Singapore Branch
MIZUHARA, Hidemoto	Corporate Strategy & Planning
ISEDA, Junichi	Division COO, Natural Gas Business Div. B
SAKUMA, Hiroshi	Division COO, New Energy & Power Generation Div.
TOIDE, Iwao	Division COO, Steel Business Div.
MISU, Kazuyasu	Head of Living Essentials Group for China
NAKAYAMA, Shinichi	Division COO, Commodity Chemicals Div. B
SANTO, Masaji	President, Mitsubishi Chile Limitada
TAKADA, Mitsuyuki	Managing Director & CEO, Mitsubishi Australia Ltd. (Concurrently) Managing Director, Mitsubishi New Zealand Ltd.
KOYANAGI, Kenichi	Officer for E & P, Energy Business Group

SHIMOYAMA, Yoichi	General Manager, Finance Dept.
MURAKOSHI, Akira	Division COO, General Merchandise Div.

### **【The number of Senior Vice Presidents (as of April 1, 2012)】**

(NOTES) Excludes “Shikko-Yakuins” retiring as of the General Meeting of Shareholders in June.

President & CEO	:	1 Person
Senior Executive Vice Presidents	:	4 Persons
Executive Vice Presidents	:	13 Persons
<u>Senior Vice Presidents</u>	:	<u>38 Persons</u>
<b>TOTAL</b>	:	<b>56 Persons</b>

### **3. Senior Vice President (“Riji”) : 48 Persons**

(NOTES) As of April 1, 2011. Excludes Rijis retiring from April.

Positions are subject to change due to Personnel Changes in the future.

Name	Position
SASAKI, Osamu	President, Mitsubishi de Mexico S.A. de C.V.
AWAYA, Tsutomu	President & CEO, Mitsubishi Corporation (Korea) Ltd.
TAMARU, Soichi	Senior Assistant to Group CEO (Portfolio Management), Metals Group
MIYAGAKI, Hiroyuki	Qingling Motors Co, Ltd.
NISHIMURA, Hideto	Executive Vice President, COO, Mitsubishi Corporation Exploration Co., Ltd.
ICHIMURA, Kazuhiko	President, Mitsubishi Corporation Urban Development, Inc.
MORI, Kazuyuki	Division COO, Natural Gas Business Div. A
SAITO, Yu	General Manager, Moscow Office (Concurrently) Senior Assistant to Regional CEO, Europe-CIS, Middle East & Africa (Russia & Ukraine)
OGATA, Akinobu	Division COO, Environment & Infrastructure Business Div.
YOSHIZAWA, Yoshihito	General Manager, Internal Audit Dept.
KONDO, Masaki	Senior Assistant to Regional CEO, Latin America, (Concurrently) President, Mitsubishi Corporation do Brasil, S.A.
NAKAZATO, Makoto	Division COO, Carbon & LPG Business Div.
OMURA, Tetsuaki	Senior Assistant to SEVP, Global Strategy & Business Development (Concurrently) Senior Assistant to EVP, Regional Strategy (Japan) (Concurrently) Senior Assistant to Regional CEO, Asia & Oceania
MOMOSAKI, Tetsuro	Division COO, Life Sciences Div.
NAKAGAWA, Hiroshi	President, Tri Petch Isuzu Sales Co., Ltd.
OGURA, Kazuhira	Deputy General Manager, Kansai Branch
MIYASHITA, Osamu	Division COO, Retail & Healthcare Div.

NAKAMURA, Hiroyuki	Division COO, Logistics Div.
YAHAGI, Yoshiyuki	Senior Executive Vice President, LAWSON, INC.
MIZUTANI, Shigeo	Executive Vice President, Swing Corporation
OSUMI, Kazunobu	General Manager, Metals Group CEO Office
KURIHARA, Hiroo	Deputy Division COO, Motor Vehicle Business Div. (Concurrently) General Manager, Motor Vehicle Europe, Middle-East & Africa Unit
SAITO, Koichi	General Manager, Hokkaido Branch
YAMANAKA, Kaoru	Chief Executive Officer, Mitsubishi Development Pty Ltd.
HISHIDA, Kunio	Division COO, Foods (Products) Div.
OTOMO, Nobuhiko	SVP, Group Head for Chemicals, Mitsubishi International Corporation
KANESHIGE, Kuninori	General Manager, Kyushu Branch
HAYASHI, Haruki	Chief Regional Officer, Africa (Concurrently) General Manager, Johannesburg Branch
KOIKE, Yosuke	General Manager for Human Resources, Industrial Finance, Logistics & Development Group
ADACHI, Jo	General Manager, MC Group IT Planning Dept., MC Group IT Management Div.
YAMADA, Kioi	Metal One Corporation
HATA, Noburo	General Manager, Business Service Group CEO Office (Concurrently) Senior Assistant to CIO
MASUDA, Osamu	Deputy Division COO, Environment & Infrastructure Business Div.
IWAKI, Hiroto	Senior Assistant to Regional CEO, East Asia (Corporate)
KUWATA, Hiroshi	General Manager, Metals Group Administration Dept.
TOKUYAMA, Shimon	General Manager, Hanoi Representative Office
AOKI, Katsuhiko	General Manager, Industrial Finance, Logistics & Development Group CEO Office
SHIMAZAKI, Toshihiro	General Manager, Smart Community Business Integration Unit, Infrastructure Project Div.
MURATA, Koichi	Senior Assistant to Group CEO (Real Estate Investment & Management) (Concurrently) General Manager, Real Estate Investment & Management Unit, Industrial Finance, Logistics & Development Group
MURAYAMA, Masahiko	General Manager, Machinery Group CEO Office
SUZUKI, Daiichiro	President, Mitsubishi Corporation Financial & Management Services (Japan) Ltd.
KUNOGI, Shizuho	General Manager, Tohoku Branch
YANAGAWA, Katsuhiko	Deputy General Manager, Kansai Branch (Concurrently) General Manager, Fiber, Yarn & Industrial Textiles Dept.
YOSHITAKE, Yutaka	General Manager, Corporate Auditors' Office

ISHIYAMA, Hirotsugu	Division COO, Ship & Aerospace Div.
ICHIKI, Nobuya	General Manager, Global Real Estate Unit, Real Estate Development & Construction Div.
NAKAGAWA, Eiji	General Manager, Chugoku Branch
MIYOSHI, Hiroshi	General Manager, Istanbul Main Branch (Concurrently) Senior Assistant to Regional CEO, Europe-CIS, Middle East & Africa (Turkey, Middle Asia & Caucasia), (Concurrently) General Manager, Ankara Branch

**(END)**