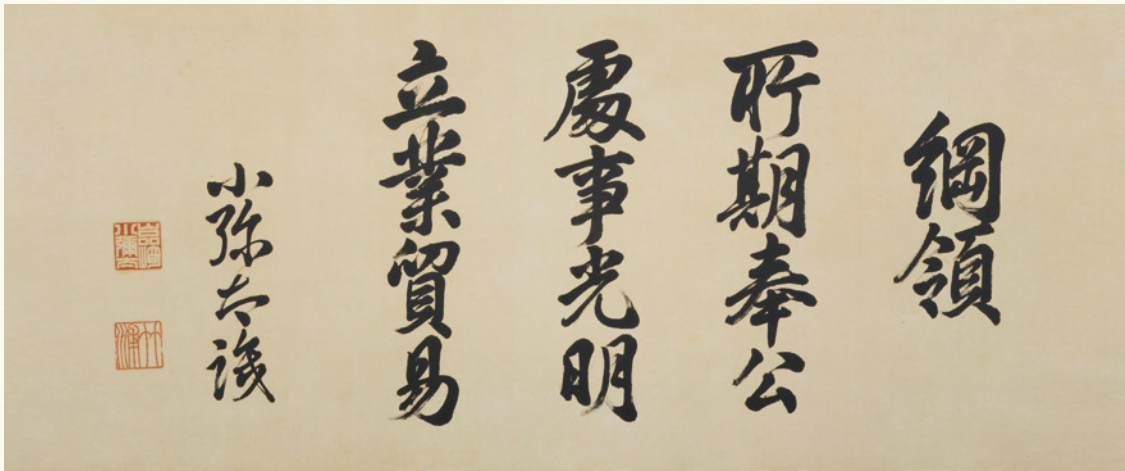


三菱商事

Mitsubishi Corporation
in China

2022年版





三纲领	01	The Three Corporate Principles
致辞	02	Greetings
组织机构	05	Organizations in China
核心业务	06	Core Business
综合素材、石油、天然气	06	Industrial Materials & Petroleum & Natural Gas
金属资源	08	Mineral Resources
食品与消费	10	Food & Consumer Industry
电力、基础设施与移动	12	Power & Infrastructure & Mobility
都市开发事业	16	Urban Development
化学	18	Chemicals
在华合并结算公司	20	Consolidated Subsidiaries and Affiliates in China
中国之路	24	History in China
可持续发展和社会贡献	26	Sustainability & CSR
公司概况	29	MC Profile

“三纲领”是以三菱第四任总裁岩崎小弥太的教导为基础，于1934年被确定为原三菱商事的行为指南。

尽管原三菱商事已于1947年解散，“三纲领”仍然是现在三菱商事的企业理念，其精髓也已深入到每一位职员的内心中。此外，三纲领也是整个三菱集团的经营根本理念。现在活跃在各个不同领域的三菱集团各家公司，作为具有相同传统和理念的同根企业，还在继续不断地相互切磋琢磨。

The Three Corporate Principles were formulated in 1934 as the action guidelines of Mitsubishi Trading Company (Mitsubishi Shoji Kaisha), based on the teachings of Koyata Iwasaki, the fourth president of Mitsubishi.

Although Mitsubishi Trading Company ceased to exist as of 1947, the principles were adopted as MC's corporate philosophy, and this spirit lives on in the actions of today's management and employees. The Three Corporate Principles also serve as the cornerstone of the management ethos of the so-called Mitsubishi group of companies. Active in many business fields and united by a common history and philosophy, the Mitsubishi companies continue to grow through a strong spirit of friendly competition with one another.

<div>所期奉公</div> <div>Corporate Responsibility to Society</div> <div>“Shoki Hoko”</div> <div>通过发展事业努力实现物资和精神更加丰富的社会，同时为维护宝贵的地球环境作贡献。</div> <div>Strive to enrich society, both materially and spiritually, while contributing towards the preservation of the global environment.</div>	<div>处事光明</div> <div>Integrity and Fairness</div> <div>“Shoji Komei”</div> <div>以光明磊落为行动的宗旨，保持经营活动的公开性和透明性。</div> <div>Maintain principles of transparency and openness, conducting business with integrity and fairness.</div>	<div>立业贸易</div> <div>Global Understanding Through Business</div> <div>“Ritsugyo Boeki”</div> <div>立足于全球及宇宙的宏观立场开拓事业。</div> <div>Expand business, based on an all-encompassing global perspective.</div>
<div>2001年1月，由三菱集团相关成员企业各公司组成的三菱周五例会所约定的现代解释。</div> <div>The modern day interpretation of the Three Corporate Principles, as agreed on at the Mitsubishi Kinyokai meeting of the companies that constitute the so-called Mitsubishi group in January 2001.</div>		



中塚 润一郎

三菱商事株式会社 中国总代表
三菱商事(中国)有限公司 董事长兼总经理
三菱商事(上海)有限公司 董事长兼总经理

Junichiro Nakatsuka

Chief Representative for China,
Chairman President, Mitsubishi Corporation China Co., Ltd.
Chairman President, Mitsubishi Corporation (Shanghai) Ltd.

三菱商事入驻中国40余年，一直得到中国政府机构、合作伙伴以及广大消费者的指导和支持，不断开拓在华业务。至今三菱商事在中国拥有包括北京、上海、广州、香港在内的10个分支机构、以及60余家事业投资公司。

新冠疫情发生以来，中国经济整体保持持续稳定发展态势，今后必将进一步增强在全球的影响力，带动后疫情时代的全球经济增长。

三菱商事及其事业投资公司将会根据中国的国民经济和社会发展“十四五”规划和二〇三五年远景目标等，继续扎根中国，与中国企业一起共同接受挑战，抓住机遇，携手并进。

在2022年5月对外公布的三菱商事中期经营战略2024中，提出了通过最大程度地发挥三菱商事集团的综合能力来解决社会问题，从而持续创造具有规模的MC Shared Value（三菱商事的共享价值）的观点。为了持续创造“MC Shared Value”，三菱商事把通过开展商业活动来解决的重要社会课题定义为“公司发展的重要课题”。包括“对低碳社会的贡献”、“自然资本的保护和有效利用”、

“实现可持续的安定社会和生活”、“通过创新来解决社

会问题”、“区域问题的解决和与社区的共存”、“在推进商业活动中尊重人权”、“实现由多样化人才来创建面向未来的富有活力的组织”、“实现透明度高且富有弹性的组织”这8个项目，强化三菱商事在可持续发展方面的措施。我们将纵观各个产业的形势，构筑符合时代变化的最佳事业资产组合，为终端消费者提供服务及其附加价值。

与此同时，三菱商事在中国多年来还围绕着“实现兼容并包的社会”、“培养下一代和使其自立”以及“环保”三个核心开展社会贡献活动。在这一思想的指导下我们长年资助天使知音沙龙，关爱自闭症儿童，帮助其融入社会；和三菱商事其他企业一起连续举办三菱友谊杯残疾人足球赛，促进中国残疾人体育事业的发展；资助湿地自然保护区的候鸟等野生动物保护宣传项目，促进生物多样性相关教育；支援并在中日文化交流等领域开展了多种多样的慈善项目，以回报中国社会。

在三菱商事，员工们不分国籍与地区，共同秉承“三纲领”这一行动理念，以光明磊落、守法经营为行动宗旨，脚踏实地地为保护地球环境、力争为创建富足的社会做出贡献。期待着您一如既往的指导与支持！



2021年5月中塚总代表与冯飞海南省省长在海口会谈。



2021年4月中塚总代表与蔡允革重庆市副市长在博鳌会谈。



2021年中塚总代表与时任广东省长马兴瑞会面

Mitsubishi Corporation has settled in China for more than 40 years and has continued to develop its business in China with the guidance and support of Chinese government agencies, partners, and consumers. So far, it has 10 branches in China, including Beijing, Shanghai, Guangzhou, and Hong Kong, and over 60 business investment companies.

Since the outbreak of the COVID-19 pandemic, China's economy as a whole has maintained its development momentum. In the future, it will further enhance its global influence, driving global economic growth in the post-pandemic era.

Mitsubishi Corporation and its business investment companies will continue to take root in China and work together with Chinese companies to accept challenges, seize opportunities, and move forward in accordance with the “14th Five-Year Plan (2021-2025)” for economic and social development and Long-Range Objectives through the Year 2035.

In the Midterm Corporate Strategy 2024 released in May 2022, Mitsubishi Corporation proposed continuously creating MC Shared Value by elevating the MC Group's comprehensive capabilities to address societal challenges. To achieve this, we selected a set of crucial societal issues as our unique definition of “materiality” we will prioritize through our business activities including "Contributing to Decarbonized Societies", "Conserving and Effectively Utilizing Natural Capital", "Promoting Stable, Sustainable Societies and Lifestyles", "Utilizing Innovation to Address Societal Needs", "Addressing Regional Issues and Growing together with Local Communities", "Respecting Human Rights in

Our Business Operations", "Fostering Vibrant Workplaces that Maximize the Potential of a Diverse Workforce" and “Realizing a Highly Transparent and Flexible Organization” with the purpose of strengthening our sustainability initiatives. We will look across the situation of each industry, build the best business asset portfolio that is in line with the changes of the times, and provide services and added value to end consumers.

At the same time, Mitsubishi Corporation has carried out social contribution activities in China for many years around three core areas “Realizing an Inclusive Society”, “Empowering the Next Generation” and “Conserving the Environmental”. Under the guidance of this thought, we have sponsored the Angel Salon for years to care for children with autism and help them integrate into society; held the Mitsubishi Friendship Cup Disabled Football Match with other companies to promote the development of China's disabled sports; funded wildlife conservation programs for migratory birds and other species in wetland reserves to promote biodiversity-related education. In addition, various charitable projects have been carried out in the fields of Sino-Japanese cultural exchanges to repay Chinese society.

In Mitsubishi Corporation, employees, regardless of nationality or region, jointly uphold the action concept of “The Three Corporate Principles”, take “Being Open and Aboveboard” and “Law-abiding Management” as their action objectives, and strive to protect the global environment and make contributions to the creation of a prosperous society in a down-to-earth manner. We are looking forward to your continued guidance and support!



三田地 肇
三菱商事(中国)商业有限公司 董事长兼总经理
三菱商事株式会社 北京总代表

Hajime Mitachi
Chairman & General Manager of Mitsubishi Corporation China Commerce Co., Ltd.
Chief Representative of Mitsubishi Corporation in Beijing

随着中国在全球影响力的增加,首都北京也越来越受世界瞩目。三菱商事(中国)商业有限公司,迄今为止在中国开展了成套设备、金属、化学品、资材等各类商品的进出口业务等,与中国经济的发展共同成长。近年来,我们在充分理解中国政府的产业政策等发展趋势的基础上,关注政府提倡的创新与绿色发展,积极探讨在新能源车、智能城市、医疗保健及消费领域方面开展业务。

今后,我们将继续从经济、市场、创新等方面把握中国最新动向,与中国的合作伙伴一起,积极开拓不断发展的中国市场。我们希望通过这些努力,搭建中日进一步合作和共同发展的桥梁。

As China's global influence increases, its capital Beijing is gaining increasing attention from around the world. Mitsubishi Corporation China Commerce Co., Ltd. has been active in the import and export business of plants, metals, chemicals, materials, and other commodities in China for many years, and has grown together with the development of China's economy. In recent years, based on an understanding of the Chinese government's industrial policies, and by paying close attention to the innovation and green development advocated by the government, we decided to actively explore business development in new energy vehicles, smart cities, healthcare, and consumption. In the future, we will continue to embrace the latest developments in China as regards the economy, the market, and innovation, and will actively participate in the growing market with our Chinese partners. We hope that through these efforts, we will build a bridge for further cooperation and joint development between China and Japan.



中塚 润一郎
三菱商事株式会社 中国总代表
三菱商事(中国)有限公司 董事长兼总经理
三菱商事(上海)有限公司 董事长兼总经理

Junichiro Nakatsuka
Chief Representative for China,
Chairman President, Mitsubishi Corporation China Co., Ltd.
Chairman President, Mitsubishi Corporation (Shanghai) Ltd.

三菱商事(上海)有限公司作为三菱商事在中国一体化经营的核心,统筹管理三菱商事(中国)有限公司旗下的各分支机构。基于总公司各营业部门的战略,与各分支机构携手并积极致力于相关事业的开发和壮大。同时,我们也根据总公司以及中国国内的事业投资公司的发展需求,提供一系列商业活动、政策资讯、产业信息、市场开发等多方面的支援以及必要的行政管理服务。

如今,世界正处在百年未有之大变局,国际形势瞬息万变。在此背景下,我们正以俯瞰世界的全球化视角,分析和把握不确定的宏观环境。随着“十四五”规划的不断深入,国内国际双循环的新发展格局不断稳固。我们也将继续扎根长三角地区,密切关注数字化转型(DX)和脱碳转型(EX)等新领域的发展趋势,利用绿色金融、ESG管理等有效手段,为实现社会和企业的可持续发展,为上海成为引领国内乃至世界的国际大都市贡献力量。

Under the umbrella of Mitsubishi Corporation China (CIC), Mitsubishi Corporation (Shanghai) (SSL) serves as the hub of operations for Mitsubishi Corporation (MC) in China. SSL manages all CIC branches and works with them to implement the strategies of business departments at MC head office while proactively facilitating business development and expansion. SSL supports business operations, policy information, industrial information, market development, and other administrative services in response to needs at head office and at subsidiaries and affiliates across China. At present, the world is in the midst of great changes unseen in a century and in an ever-changing global landscape. In this context, we are analyzing and grasping the uncertain macro environment from a global perspective. As the 14th Five-Year Plan progresses, the new dual circulation development pattern will be firmly established. We will continue to keep our roots in the Yangtze River Delta region, pay close attention to the development trends in new areas such as digital transformation (DX) and integrated energy transformation (EX), and use effective tools such as green finance and ESG management to contribute to the sustainable development of society and companies, and to make Shanghai a leading international metropolis in China and the world.



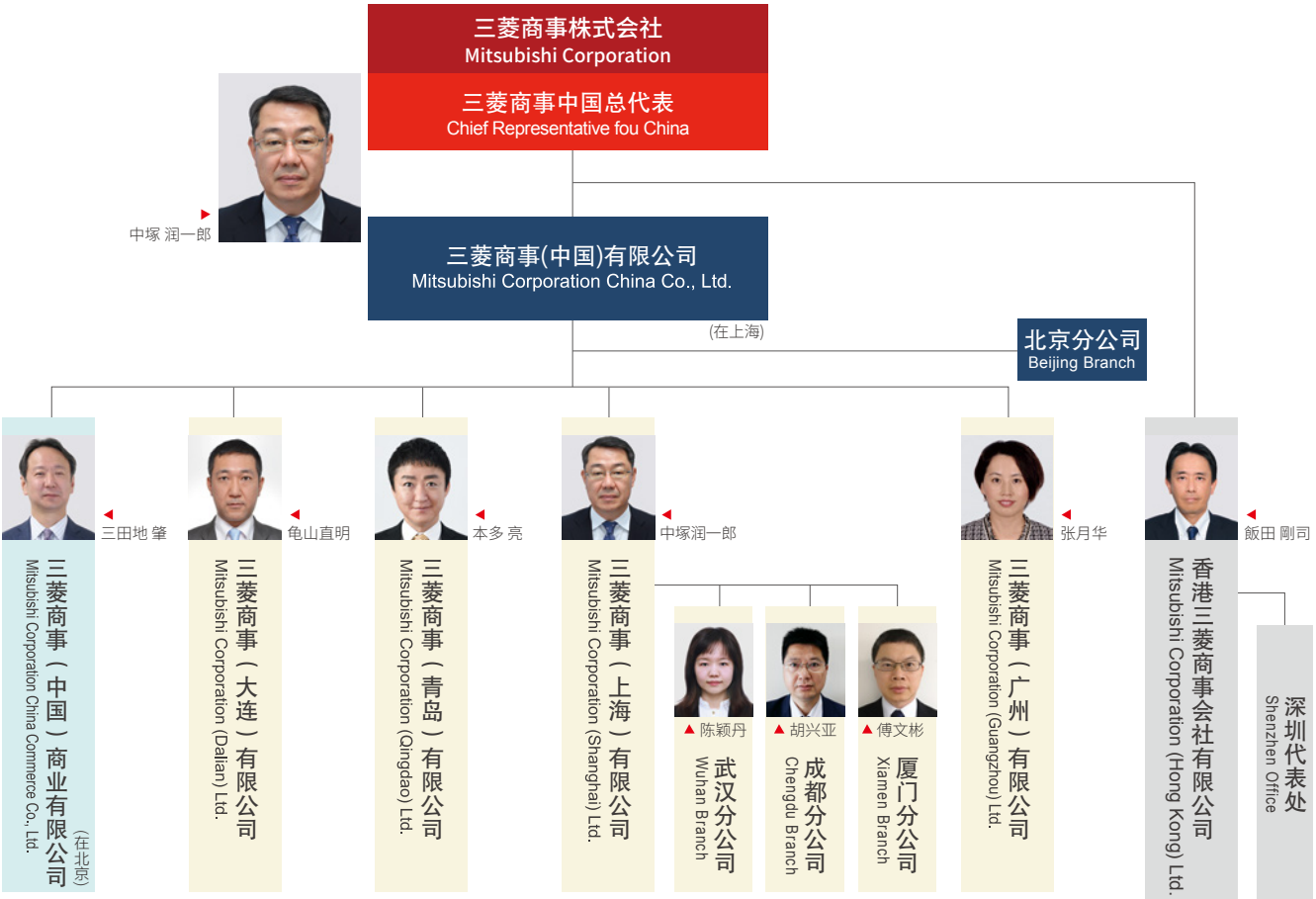
飯田 剛司
香港三菱商事会社有限公司 董事长兼总经理
香港三菱商事会社有限公司 深圳代表处 所长

Takeshi Iida
President and Managing Director, Mitsubishi Corporation (Hong Kong) Ltd.
General Manager, Shenzhen Representative Office of Mitsubishi Corporation (Hong Kong) Ltd.

随着国家大湾区发展计划的开展,香港与大湾区六千万人口的大市场紧紧相连。在未来人才、物资及资产流动将快速增长,给大湾区及国际市场带来更多的商机。香港最大的特色之一就是它联结亚太地区,特别是中国、东盟及日本,是个名副其实的国籍金融及贸易中心。

同时,我们会通过深圳代表处,与当地初创企业合作为我公司上千个子公司所面临的“痛点”提供解决方案(生产或服务工程中的瓶颈一旦解决将会大大提高效率)。

The Guangdong-Hong Kong-Macao Greater Bay Area (GBA) initiative has brought Hong Kong closer to the market with a combined population of more than 60 million people. Business opportunities are expected to grow exponentially in the coming years as a result of increased flow of people, goods, and capital within the region, as well as through international markets. One of Hong Kong's most important features is the ability to connect the entire Asia-Pacific region, especially mainland China, ASEAN and Japan, as an international financial center and trade hub. In addition, through our Shenzhen Representative Office, we aim to develop new business opportunities utilizing the ideas of Shenzhen's start-ups to solve the "Pain Points" of MC's 1000+ subsidiaries' (i.e. bottlenecks of manufacturing or service processes which if solved will enhance efficiency).



- | 投资性公司 | 保税区公司 | 商业性公司 | 香港法人 |
|--|--|---|---|
| 北京 Beijing
电话 (86-10)6518-3030
传真 (86-10)6518-3040 | 上海 Shanghai
电话 (86-21)6854-3030
传真 (86-21)6854-1911 | 广州 Guangzhou
电话 (86-20)3891-1268
传真 (86-20)3891-2628 | 香港 Xianggang
电话 (852)2529-4381
传真 (852)3151-0610 |
| 大连 Dalian
电话 (86-411)8250-7030
传真 (86-411)8250-7031 | 武汉 Wuhan
电话 (86-27)8359-0830
传真 (86-27)8359-0828 | 青岛 Qingdao
电话 (86-532)8571-3030 | 深圳 Shenzhen
电话 (86-755)8436-7690 |
| 成都 Chengdu
电话 (86-28)8612-3030
传真 (86-28)8613-2050 | 厦门 Xiamen
电话 (86-592)268-3030
传真 (86-592)268-3033 | | |

核心业务 Core Business

三菱商事在中国的贸易活动与事业投资涉及电力与基础设施、移动出行、能源、金属、复合城市开发、食品与消费品、化学等各个传统领域,以及节能与环保、IT、新能源开发等诸多新兴领域,致力于为中国客户提供从开发直至采购、生产、流通销售等各环节的整体经营的最佳解决方案。并通过有效利用三菱商事的组织能力和遍及全球的网络来协调所需的经营资源,在自行承担风险的同时,提高业务的价值,与中国客户一起在海内外开展事业投资。

MC has long been engaged in business in virtually every industry, including power infrastructure and mobility, energy, metals, urban development, food and general merchandise, chemicals. Today, we are also a strong player in emerging business domains, such as energy conservation, the environment, IT, and new energy. The MC is committed to providing optimal solutions at all stages of business from development, procurement and production to logistics and sales. At the same time, we can share the risk with our Chinese partners in investing overseas, and add value by leveraging the MC's organizational strength and global networks.



综合素材部门
Industrial Materials Group

三菱商事致力于通过在工业材料行业进行创新性变革来创造可持续发展社会。我们的炭素材料产品组合涉及用于炼钢和电解铝的炭素产品、用于锂电池的负极、以及石油焦和冶金焦。

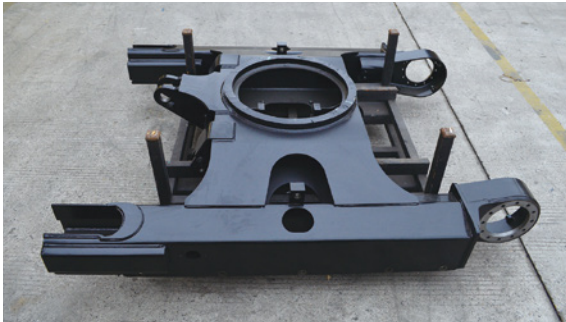
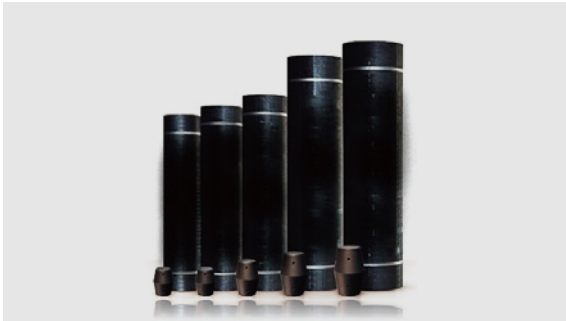
MC commit to create sustainable society through innovative transformation in the material industries. Our carbon material portfolio deals with carbon products for steelmaking and aluminum smelting, negative electrodes for batteries, and petroleum coke and coal coke.

我们同时向中国的制造商供应产自澳洲自有矿山的高品质石英砂。我们将商业模式从传统的贸易形式转变为投资模式，并建立起从矿山开采到市场销售为一体的综合供应链以及物流和销售网络。为满足日益增长的市场需求，我们将继续致力于石英砂的稳定供应。同时，努力做好环境保护，与当地居民和谐共存，减少企业活动产生的碳足迹。

We also supply high-quality silica sand, mined and processed from our wholly-owned mine in Australia, to Chinese manufacturers. We have changed our business model from traditional trading activities into investments activities and established an integrated supply chain with its logistics and sales network that extends from the mine to the market. We continue to contribute to the stable supply of silica sand, for which demand is steadily growing while working to preserve the natural environment, coexist with local communities, and reduce the carbon footprint of its business activities.

同时，我们在中国积极参与钢铁贸易实务长达30余年，该业务现由美达王中国负责管理。美达王公司是全球最大的钢铁贸易商，钢材全球年均销量超过2,500万吨，在全球设有30余家分公司以及办事处，加工配送中心100家以上。美达王中国在上海、天津、广州、香港及台湾分别设有5家分支机构，9家钢材加工配送中心和合作供应商。通过提供从配送、仓储到钢铁加工的各种服务，建立了连接钢铁冶炼厂和客户的价值链。

We also have been active in steel-related business in China, now handled by Metal One China, for more than three decades. Metal One is the largest steel trader in the world. The company has more than 30 branches and offices, more than 100 processing and distribution centers world-widely, and an average annual steel sales of more than 25 million tons. Metal One China has 5 local subsidiaries in Shanghai, Tianjin, Guangzhou, Hong Kong and Taiwan, 9 steel processing and distribution centers and cooperative suppliers as well. It builds up a value chain connecting steel manufactures and customers by providing a variety of services from distribution and inventory to processing of steel products.



LIVING
EXAMPLE

石油化工部门(石油)
Petro Chemical Group(Petroleum)

三菱商事在向中国石油化工行业供应原油、石脑油和液化石油气的同时，还从中国向海外市场出口汽油、柴油等石油产品以及生物质燃料。

MC supplies crude oil, naphtha, and LPG to China's petrochemical industry, also exports petroleum products such as gasoline, diesel, and biomass fuels from China to overseas markets.



天然气部门
Natural Gas Group

天然气部门按照全球向低碳/脱碳社会的转变发展其能源业务。三菱商事从我们在全球的液化天然气设施向中国提供稳定的能源供应，并帮助应对气候变化和空气污染等环境挑战。

为了优化这种活动，三菱商事正通过新加坡的子公司 Diamond Gas International Pte. Ltd. (DGI) 提供液化天然气的组合供应。DGI于2021年在北京成立其子公司“DGI中国”（达梦德信息咨询(北京)有限公司）。

三菱商事还将注意力集中在开发天然气、LNG产氢，以及碳捕获、利用和储存 (CCUS) 技术上，这两种技术有望成为减少排放的有力方法。

The Natural Gas Group develops its energy businesses in line with the global shift towards a low carbon /decarbonized society. From our LNG facilities around the globe, MC provides a stable supply of energy to China and helps to address environmental challenges such as climate change and air pollution.

To optimize such activity, Mitsubishi is providing portfolio supply of LNG through subsidiary in Singapore, Diamond Gas International Pte. Ltd. (DGI). DGI established its affiliated company “DGI China” in Beijing in 2021.

MC is also focusing our attention on developing hydrogen from natural gas/LNG, as well as on carbon capture, utilization and storage (CCUS) technologies, both of which are expected to be promising methods for reducing emissions.



金属资源
Mineral
Resources

金属资源部从事多种矿产资源及金属，包括焦煤、铁矿石等钢铁材料，以及铜、铝等有色金属等的贸易、事业开发及投资。

我们的目标是通过准确评估各个部门和运营业务中的客户需求，适应不断增长的全球市场，同时展望并顺应社会发展趋势，如脱碳、电气化及循环经济，从而实现业务价值最大化。

以焦煤和铜作为其主要支柱，金属资源部门的使命是进一步增强其世界级优质矿产资源的品质以及竞争优势，同时以有利于环境的方式面向市场与客户，实现长期可持续的稳定供应。

我们投资、开发并且管理包括焦煤、铜、铁矿石、铝等在内的各类矿产，预计随着世界经济的增长，对于这些资源将存在长期稳定的需求。同时，我们以位于新加坡的全球贸易总部 Mitsubishi Corporation RtM International Pte. Ltd (“RtM”) 为中心，不断提供高质量服务和机能，从而加强我们的黑色金属以及有色金属等的供应能力。

另外，我们也致力于精准地分析客户所需，在业务运营中摸索结合数字技术应用的可能性（人工智能/物联网等），以及在电动汽车产业链上的业务拓展，从而实现商业价值和收益的最大化。

The Mineral Resources Group is engaged in trading, business development and investment for a variety of mineral resources and metals. These include ferrous raw materials such as metallurgical coal and iron ore, as well as non-ferrous metals such as copper and aluminum.

We aim to maximize our business value by accurately assessing customer needs in each segment and operating businesses that adapt to the growing global market, while also looking ahead to societal trends such as decarbonization, electrification and the shift to a circular economy.

Metallurgical coal and copper as its main pillars, Mineral Resources Group's mission is to further enhance the competitive advantage as well as the quality of its world-class quality assets, while delivering long-term sustainability in ways which are good for the environment and for supply chain.

We manage various assets through investment and development in mineral resources such as metallurgical coal, copper, iron ore, and aluminum etc. that are expected to remain in solid demand in the long term along with the world economic growth. Meanwhile, we are leveraging high-quality services and functions enabled with the global network centering on Mitsubishi Corporation RtM International Pte. Ltd. in Singapore for ferrous raw materials and non-ferrous metals to strengthen the supply capabilities.

By accurately assessing customer needs in each segment and operating businesses that adapt to the global market with looking ahead to the utilization of digital technologies like AI/IoT and the expansion of electric vehicle market, we aim to maximize our profits and business value.



三菱商事公司在中国积极参与金属贸易（包含钢铁原料、制品等）实务长达30余年。为了运用我们的全球网从而丰富以及加强我们为中国商业伙伴所提供的各种服务，我们在中国地区成立了RtM的全资子公司 三菱商事金属贸易（中国）有限公司（“RtM中国”），并于2020年4月1日起正式继承与开展我司在中国地区的主要金属矿业商品贸易相关业务。我们将继续坚持并加强与多方企业建立有关铁矿石、铜（包含铜精矿、电解铜、阳极板等）、铝（包含铝矾土、氧化铝、电解铝、再生铝等）、贵金属（包含租赁业务等）、电池材料、不锈钢原材料、稀土类金属等各类金属商品的贸易合作伙伴关系。

三菱商事公司在全球拥有优质并且长期稳定的矿产资源投资项目（例如澳大利亚、智利、秘鲁等地），同时，以“RtM”冠名进行贸易活动的公司和办公室遍布于世界各大关键性城市（例如北京、新加坡、东京、伦敦、纽约、迪拜、新德里），这些使得三菱商事（上海）有限公司和RtM中国能够携手将贸易活动贯穿于黑色金属原料、有色金属原料以及制品的上下游整条产业链，更加稳定并且合理地满足客户在中国的实际需求。

LIVING
EXAMPLE

我司在全球投资的矿山，包括智利的Escondida铜矿，英美资源集团下属Sur分公司在智利持有的Los Bronces铜矿（包含大片未开发矿区），秘鲁的Antamina铜锌矿，以及智利的CMP铁矿等。产自于此些矿山的精矿和阴极铜，被运往中国、日本以及其他国家的冶炼厂和钢铁厂。与此同时，我司也参与了相关各环节的贸易活动。



秘鲁Antamina矿
Antamina mine Pit

Mitsubishi Corporation has been involved in mineral resources and metals business in China for more than three decades. To make the best use of our global network to expand and strengthen our relationships throughout the mineral resources and metals business fields in China, we established Mitsubishi Corporation RtM China Ltd. (“RtM China”), which is a 100% subsidiary of RtMl, and have started our operation from April, 2020. We build and enhance business relationships with our partners and customers by trading in fields of metallic and mineral-based commodities, such as iron ore, copper (including copper concentrates, copper cathode, anode, etc.), aluminum (including bauxite, alumina, ingots, second alloys, etc.), precious metals (including lease business), battery materials, stainless raw materials, and rare metals.

The active and long-term stable investments that Mitsubishi Corporation has in mining globally (such as investments in Australia, Chile, Peru, etc.), and RtM's global trading network which are located among the most sophisticated cities in the world (such as Beijing, Singapore, Tokyo, London, New York, Dubai and New Delhi), make it possible for Mitsubishi Corporation Shanghai Ltd. and RtM China together to cover a wide range of mineral resources and metals throughout the whole industry value chain so that the company could be able to satisfy our clients' actual business needs in China on a very stable and reasonable basis.

Resources from assets including Escondida mine (copper), Anglo American Sur (copper), CMP (iron ore) in Chile, and Antamina mine (copper and zinc) in Peru, are currently shipped to smelting plants and steel mills in China, Japan and other countries, while we are also actively involved in these trading activities.



智利Los Colorados矿
Los Colorados mine of CMP in Chile



消费产业部门
Consumer Industry Group

随着中国经济的迅速发展，人们的生活方式也在发生巨大的变化和进步。消费产业部门通过利用长期以来积累的见识和经验，满足多样化的市场需求，在“零售/服装 S.P.A/大健康/物流事业”四个领域，领导解决社会课题，同时在零售店铺网络等社会基础设施建设方面实现价值最大化。

此外，通过线上和线下的融合，构筑对消费者来说利用价值更高的新零售平台。特别是在医疗、保健、看护等领域，三菱商事充分利用多年积累的医院经营支援经验以及医药品、医疗用消耗品的最尖端物流技术，在中国国内积极拓展新事业，为民众的健康作出贡献。

食品产业部门
Food Industry Group

致力于解决在“食品化学/食品原料/农水产/全球快消食品”四个领域供应链中的多个社会课题并积极作出贡献。将日本的优质商品和服务带入中国市场，及时捕捉消费者的需求，在消费者需要产品和服务时能及时对应并建立相应的机制，为社会实现建立健康且安全、安心的舒适生活模式做出贡献。在食品领域，通过构筑从原料采购到食品生产加工、销售的纵向综合业务模式，以满足消费者的需求为目标，树立以商品稳定提供、高效服务消费者为宗旨。



亚惠美食广场
Acasia Food

With the rapid economic development of China, people's lifestyles have changed and improved significantly. The Consumer Industry Group has been able to respond to diverse market needs by utilizing the knowledge and experience accumulated over many years, and leads the solution of social issues in the four fields of “Retail & Apparel S.P.A & Healthcare Distribution & Logistics Business”, and has realized the value maximization of the real asset social infrastructure, such as, a thriving retail store network.

Moreover, we aim to create a more valuable retail/distribution platform for consumers through the fusion of real-world shopping and online shopping. Particularly in the fields of Medical, Health and Nursing Care, MC is actively developing businesses and contributing to the health of the people of China by utilizing their experience in hospital management support and the leading-edge logistics technology for pharmaceutical and medical consumables.

Contributing to the solution of various social issues of the supply chain in the four fields of “Food Food Sciences, Food Resources, Produce & Marine Products, and Global Fast Moving Consumer Goods”, is the horizontal development of high-quality products and services provided by Japan to the Chinese market prompted by the needs of the consumers. We are actively working on the creation of a system that would not only provide products and services, but would also meet the consumers’ needs as soon as possible, and would contribute to the realization of a comfortable life encompassing health, safety and security. In the field of Food, we aim to create the stable and efficient delivery of the products which consumers need by constructing a business model that vertically integrates raw material procurement, food production processing and sales.



国药控股北京天星普信生物医药有限公司的物流仓库
Logistic Warehouse of Beijing Tianxing Puxin Bio-med Sinopharm Holding Co., Ltd.

LIVING
EXAMPLE

1996年起罗森便利店进入中国，最初在上海开店，三菱商事支持该事业。现在店铺已经遍及北京、重庆、大连、武汉、沈阳、成都、厦门、深圳、海口等地，成为中国境内知名便利店之一。今后我们将继续致力于满足中国消费者的需求，不断成长。

MC supports the expansion of the Lawson convenience store chain in China which established China's first store in Shanghai in 1996. Lawson's has expanded to other cities including Beijing, Chongqing, Dalian, Wuhan, Shenyang, Chengdu, Xiamen, Shenzhen and Haikou becoming one of the leading convenience store brands across the country. Going forward, we remain committed to working towards meeting the needs of consumers in China as we continue to grow our business.



上海罗森便利店
Lawson's convenience store in Shanghai



上海菱威深信息技术有限公司作为三菱商事与野村综合研究所的合资企业提供从IT咨询到开发的一站式服务，是2003年于上海设立的IT服务企业。中国国内有3个分支机构，员工约200人，为制造业、零售与流通、金融企业等约200家日资、欧美资全球企业提供高质量的一站式IT服务。

A One-Stop-Shop for IT Services, from consulting to development of iVison is a one-stop IT service provider set up in 2003 with the Nomura Research Institute. Its three Chinese bases and about 200 employees provide high-quality IT services to approximately 200 Japanese and Western firms in manufacturing, retail, distribution, finance, and other sectors.



菱华商业（上海）有限公司
Tredia China Co., Ltd.



浙江大菱海洋食品有限公司
Zhejiang Daling Seafood Co., Ltd.

电力、基础设施
与移动事业

Power & Infrastructure
& Mobility



LIVING
EXAMPLE

电力解决方案部门
Power Solution Group

电力行业是三菱商事重要的业务领域之一。三菱商事目前拥有并运营着多燃料独立电力生厂商“(IPP)”的资产组合，其装机容量约为 32GW，产能的股权比例约为 8GW。

Diamond Generating Asia, Limited“(DGA)”是三菱商事的全资子公司，主要负责在亚洲、大洋洲和中东地区的 IPP 投资及开发活动。

DGA 集团在印度尼西亚、菲律宾、马来西亚、泰国、中国台湾、约旦和科威特拥有多元化的燃气、燃煤和再生能源的 IPP 资产组合，装机容量约为 18GW，产能的股权比例约为 2GW。

The power industry is one of the most important business spheres of MC's activities. MC currently owns and operates a portfolio of multi-fuel independent power producer (“IPP”) assets with an installed capacity of approx. 32 GW and an equity share of capacity of approx. 8 GW.

Diamond Generating Asia, Limited (“DGA”) is a wholly-owned subsidiary of MC responsible for IPP investment and development activities in the Asia, Oceania and Middle East region.

DGA Group carries a diversified portfolio of coal-fired, gas-fired, and renewable energy IPP assets in Indonesia, Philippines, Malaysia, Taiwan, Thailand, Jordan and Qatar with an installed capacity of approx.18 GW and an equity share of capacity of approx. 2 GW.



NLREC/Philippines
Capacity : 81MW (22MW) / Wind
Share : 27%
Partners : Ayala Corp



EGCO/Thailand
Capacity : 5,482MW* (349MW) / Portfolio
Share : 6.15%
Partners : EGAT, JERA, Kyushu Electric
* EGCO's Capacity (Net Equity Base)



SEG/Indonesia
Capacity : 641MW (79MW) / Geothermal
Share : 12%
Partners : Star Energy, EGCO



Ilijan/Philippines
Capacity : 1,260MW (265MW) / Gas
Share : 21%
Partners : Korea Electric, Kyushu Electric, JERA, Marubeni

产业基础设施部门
Industrial Infrastructure Group

菱商(上海)贸易有限公司
Ryosho Machinery (Shanghai) Co., Ltd.

菱商(上海)贸易有限公司成立于2003年6月。

菱商根据客户的需求，提供最适合的加工、组装、清洗、检测等设备及服务。广泛推荐包括中国产设备在内的最先进技术及设备，为提高客户的生产效率作出积极贡献。

菱商在上海、广州、大连三地设立了分公司，通过提供各种服务和客户之间建立了有价值的链接。

在设备方面，菱商主要开展围绕三菱放电加工机、中村留精密工业复合加工机、上海丰禾清洗机等销售及业务。

Ryosho Machinery (Shanghai) Co., Ltd. (RMS) was established in June 2003. RMS provides manufacturing equipment and engineering services for processing, assembling, washing, inspection, etc. to meet the needs of its customers. RMS also recommends the most advanced technology and equipment, including Chinese-made machines to improve the product efficiency of its customers. RMS has 3 offices in Shanghai, Guangzhou and Dalian. It builds up a value chain connecting manufactures and customers by providing a variety of services.

In the field of industrial machines, RMS provides sales and services of “Mitsubishi” EDM (Sinkers/Wire-cut) machines, “Nakamura-Tome” Super Multi-tasking Machines, “FE-Movac” CNC Water Jet Center etc.



上海丰禾清洗机
“FE MOVAC” CNC Water Jet Center
(Washing/Deburring/Desanding)



三菱放电加工机
“Mitsubishi” EDM (Sinkers/Wire-cut)



中村留精密工业复合加工机
“Nakamura-Tome” Super Multi-tasking
Machine with ATC

LIVING
EXAMPLE

汽车与移动出行部门
Automotive•Mobility Group

宏菱融资租赁(上海)有限公司
Hongling Financial Leasing (Shanghai) Co., Ltd.

宏菱融资租赁(上海)有限公司成立于2012年3月, 主要开展融资租赁、商业保理业务, 是三菱商事集团在中国唯一的一家融资租赁企业, 宏菱曾被评为“2016年度上海自由贸易试验区保税区域创新有为企业”, 荣获“2018年度上海自由贸易试验区保税区域融资租赁业最具潜力奖”表彰。在开展日立建机品牌挖掘机融资租赁业务的同时, 自2015年开始通过商业保理模式, 为三菱汽车经销商提供车辆库存融资业务, 自2018年开始面对个人消费者, 提供三菱汽车融资租赁业务。目前, 日立建机品牌挖掘机融资租赁, 三菱汽车个人融资租赁及经销商库存融资业务已经成为宏菱最为重要的支柱业务。今后, 背靠三菱商事集团的知识经验、关系网络和信誉, 宏菱将作为一家可靠的金融企业, 持续的为移动出行及建机租赁行业等各个领域中的合作伙伴提供优质的金融服务。

Hongling Financial Leasing Co.,Ltd.(HLL) was established in March 2012,mainly provides financial leasing and factoring services.HLL is the only financial leasing company of the MC Group in China and has received a “Best Innovation Practice” award in 2016 and a “Most Potential Award to Financial Leasing Industry” in 2018 in the Shanghai Free Trade Zone. While developing the financial leasing business for Hitachi’s Construction Machinery, HLL launched dealer finance based on factoring in 2015, and customer finance in 2018 for auto of Mitsubishi Motors. At the moment, the core businesses are finance for excavators of Hitachi Construction Machinery and automobile of Mitsubishi Motors. With the MC Group’s knowledge, network and credit, HLL provides high-quality financial services to partners in various fields such as mobility and construction machinery rental industry as a highly reliable financial company.



广汽三菱汽车有限公司
GAC Mitsubishi Motors Co., Ltd.

广汽三菱位于中国湖南长沙经济技术开发区, 占地面积约为100万平方米, 公司现拥有冲压、焊装、涂装、总装、研究开发中心、发动机工厂及整车检测中心等具有先进工艺的生产车间和技术、品质保障体系, 建立了较为完善的、强大的零部件配套协作体系和布局不断完善的营销服务网络。秉承三菱汽车的先进技术和SUV专长, 广汽三菱陆续投产了多款战略车型。目前广汽三菱旗下拥有奕歌、欧蓝德、劲炫、纯电阿图柯等多款车型。广汽三菱致力于通过持续的创新、进取及对完美的不懈追求, 为顾客创造引领潮流的全新汽车生活体验。

GAC Mitsubishi Motors is located in the Economic and Technological Development Zone of Changsha, Hunan Province, covering an area of approximately 1,000,000m2. There are stamping, welding, painting and assembly workshops, a Research & Development Center, an engine plant and a vehicle inspection center with experienced craftsmen as well as technical support and a quality assurance system. It has established a complete and comprehensive supporting system for spare parts and an ever-increasing marketing and service network. With advanced technologies and the expertise of Mitsubishi’s sport utility vehicles’ (SUV) pedigree, GMMC has begun to produce a series of strategic models, with such models as the Eclipse Cross, Outlander, ASX and EV model Airtrek in its current product line-up. Through constant innovation, endeavor and unremitting effort towards excellence, GMMC is devoted to creating new, trend-leading cars that enhance the life experience of its customers.

都市开发事业
Urban
Development



复合城市开发部门最大限度发挥综合商社的广泛产业关系和财务专长，积极优化在城市开发、租赁、企业投资等领域中的商业模式，不断地增强我们的竞争优势。

The group leverages our company's wide-spread business network and financial expertise to enhance business models in the three fields of urban development, leasing, corporate investment, in which we bring to bear our competitive advantage.



在常州的住宅开发业务
Condominium development project in Changzhou



在徐州的住宅开发业务
Condominium development project in Xuzhou



在太原的住宅开发业务
Condominium development project in Taiyuan

LIVING
EXAMPLE

自2011年起，我们与国内及国际大型开发商在中国共同合作，包括住宅、物流、商业项目在内，目前已开发或正在开发的项目共计16个。

We have developed or are still developing 16 residential, logistics and commercial projects in China since 2011 together with major Chinese and international developers.

常州市 | 住宅开发项目
Partner : 万科
总户数: 约7000户
独立商业: 约8000m²
开发时间: 18年~25年



徐州市 | 住宅开发项目
Partner : 万科
总户数: 约1,400户
集中商业: 约30,000m²
开发时间: 2016~23年



沈阳市 | 住宅开发项目 I
Partner : 金地集团
总户数: 约4,000户
开发时间: 2011~16年 EXIT



沈阳市 | 住宅开发项目 III
Partner : 金地集团
总户数: 约4,200户
开发时间: 2015~19年



大连市 | 住宅开发项目
Partner : 金地集团
总户数: 约3,500户
开发时间: 2012~17年



重庆市 | 物流仓库开发
Partner : GLP
建筑面积: 82,000m²
运营开始: 2016年3月



武汉市 | 物流仓库开发
Partner : GLP
建筑面积: 69,000m²
运营开始: 2015年3月



南通市 | 物流仓库开发
Partner : GLP
建筑面积: 62,000m²
运营开始: 2015年5月



沈阳市 | 物流仓库开发
Partner : GLP
建筑面积: 78,000m²
运营开始: 2015年10月



太原市 | 住宅开发项目
Partner : 碧桂园
总户数: 约3,500户
独立商业: 约5,500m²
开发时间: 20年~22年 EXIT



徐州市 | 住宅开发项目 II
Partner : 万科
总户数: 约1,064户
开发时间: 2017~19年 EXIT



沈阳市 | 住宅开发项目 II
Partner : 金地集团
总户数: 约2,200户
开发时间: 2014~17年



宁波市 | 住宅开发项目
Partner : 金地商置
总户数: 约630户
开发时间: 2016~18年



天津市 | 综合体开发
Partner : 阳光新业地产
总户数: 约3,700户
商业mall: 100,000m²
开发时间: 2013~16年 EXIT



天津市 | 商业运营
Partner : 阳光新业地产
建筑面积: 约28,000m²
开发时间: 2012~22年



天津市 | 物流仓库开发
Partner : GLP
建筑面积: 50,000m²
运营开始: 2014年9月



自2011年起，与国内优秀合作方，
在10个城市，共投资16个项目。

投资项目合计		
总事业费		384亿元
住宅PJ	建面	约3,210,000m ²
物流	建面	约321,000m ²
商业	建面	约171,500m ²



三菱商事集团的化学品事业主要围绕着①乙烯及其衍生物、②聚酯纤维原料、③氯碱、聚氯乙烯树脂、④碳1化学这四个领域在中国市场展开推广。

主要面向石油化工品、工业药品、汽车、建筑、涂料与粘合剂以及电气电子产业等多个行业提供各种商品及服务，并提供社会与环境方面的解决方案，为实现富裕的社会做贡献。

关于化学事业，三菱商事于2018年10月设立了创菱上海、创菱上海北京分公司、创菱广州。通过创菱公司植根于中国市场，提供高专业性的贸易服务和投资机会。

The chemical business of Mitsubishi Corporation is mainly promoted in the Chinese market in the four fields of ①ethylene and its derivatives, ②polyester raw materials, ③ chlor-alkali, polyvinyl chloride and ④C1-chemistry.

We provide a wide range of products and services for petrochemicals, industrial chemicals, automotive, construction, coatings and adhesives, and electrical and electronics industries, etc. and we also provide social and environmental solutions to contribute to the realization of social prosperity.

Relating chemistry business, Mitsubishi Corporation established MICT (Shanghai) Co., Ltd., IVICT (Shanghai) Co., Ltd. Beijing Branch and IVICT (Guangzhou) Co., Ltd. in October 2018, and aimed to root in the Chinese market through IVICT to provide highly professional trade services and investment opportunities.

LIVING
EXAMPLE



IVICT含义

用化学让社会更丰富多彩

化工行业与我们的“衣食住行”等各方面息息相关。利用其特性、让它与我们一直以来培养的各行各业有机地结合在一起、为客户提供高附加值的服务以及各种事业机会、这就是我们IVICT（创菱）的使命。凭借我们敏锐的反应力、高度专业的贸易能力、以及新事业开拓能力、为客户的事业发展和实现丰富多彩的社会做贡献。



三菱商事于2018年10月，在4个国家分别成立了5家IVICT公司，提供更具专业性的服务。

To provide more professional services, MC established five companies of IVICT in October 2018 at four countries.

与墨西哥政府的合资企业ESSA公司运营着世界最大的日晒盐田，为日本、中国、美国等稳定供应高纯度、高质量的盐。

Exportadora de Sal, S.A. de C.V.(ESSA) in Mexico is a joint venture between MC and the Mexican government. It operates the world's largest solar salt business, providing a stable supply of high purity and high quality salt to Japan, China, North America, and other parts of the world.

ESSA盐田(墨西哥)



SHARQ公司在沙特阿拉伯生产聚乙烯以及乙二醇，规模全球屈指可数。其部分产品销往中国。

SHARQ has been producing Polyethylene (PE) and Ethylene Glycol (EG) in Saudi Arabia and is one of the world's largest producers of these chemicals in terms of scale. Some of SHARQ's products are supplied to China.

中央化学是唯一在中国拥有三处生产基地的日资塑料食品容器制造商，目前正不断扩大事业。

Chuo Kagaku Co.,Ltd. is the only Japanese plastic food packaging and container manufacturer to have three manufacturing bases in China, and is expanding business in the country from these sites.



泰国新光实业有限公司(TSIC)是一家在泰国生产销售饮料瓶用PET树脂的公司。现计划采用化学回收技术生产再生PET以扩大PET树脂的生产能力，并预计将于2022年下半年开始商业化生产。

Thai Shinkong Industry Corporation Ltd.(TSIC), which produces and sells PET resins for beverage bottles in Thailand, is expanding PET resin production capacity and also plans to produce recycled PET resins by adopting chemical recycling technologies, with commercial production scheduled to begin in the second half of 2022.

以下是三菱商事在中国的部分主要投资项目

综合素材、石油、 天然气事业	达梦德信息咨询(北京)有限公司 Diamond Gas International China
	PETRO DIAMOND COMPANY LTD.
	＜三菱商事子公司美达王的投资企业＞
	美达王(天津)商业有限公司 METAL ONE (TIANJIN) COMMERCE CO., LTD.
	美达王(中国)有限公司 METAL ONE (CHINA) CORPORATION
	美达王(广州)商业有限公司 METAL ONE (GUANGZHOU) COMMERCE CO., LTD.
	美达王(广州)商业有限公司 武汉分公司 METAL ONE (GUANGZHOU) COMMERCE CO., LTD. WUHAN OFFICE
	香港美达王有限公司 METAL ONE HONG KONG LTD.
	美达王(天津)钢材制品有限公司 METAL ONE SERVICE ASIA (TIANJIN, CHINA) CO., LTD.
	南京宝日钢丝制品有限公司 NANJING BAORI WIRE PRODUCTS MFG. CO., LTD.
	苏州美达王钢铁制品有限公司 SUZHOU METAL ONE STEEL PLATES PROCESSING CO., LTD.
	美达王(上海)钢材制品有限公司 METAL ONE SERVICE ASIA (SHANGHAI, CHINA) CO., LTD.
	上海五波钢结构材料有限公司 SHANGHAI WUBO STEEL STRUCTURE MATERIALS CO., LTD.

杭州美达王钢铁制品加工有限公司 HANGZHOU METAL ONE STEEL PLATES PROCESSING CO., LTD.
美达王(广州)钢材制品有限公司 METAL ONE SERVICE ASIA (GUANZHOU, CHINA) CO., LTD.
美达王(佛山)钢材制品有限公司 METAL ONE SERVICE ASIA (FOSHAN, CHINA) CO., LTD.
美达王(武汉)钢材制品有限公司 METAL ONE SERVICE ASIA (WUHAN, CHINA) CO., LTD.

金属资源事业	＜三菱商事子公司三菱商事RtM国际的中国子公司＞
	三菱商事金属贸易(中国)有限公司 MITSUBISHI CORPORATION RtM CHINA LTD.
	＜三菱商事子公司三菱商事RtM日本株式会社的中国投资企业＞
	青岛东洋热交换器有限公司 QINGDAO TOYO HEAT EXCHANGER CO., LTD.
	东洋热交换器(中山)有限公司 T. RAD (ZHONGSHAN) CO., LTD.
	东洋热交换器(常熟)有限公司 T. RAD (CHANGSHU) CO., LTD.

罗森(中国)投资有限公司 LAWSON CHINA INVESTMENT CO., LTD.
国药控股北京华鸿有限公司 SINOPHARM MEDICINE HOLDING BEIJING HUAHONG CO., LTD.
国药控股北京天星普信生物医药有限公司 BEIJING TIANXING PUXIN BIO-MED SINOPHARM HOLDING CO., LTD.
国药控股菱商医院管理服务有限公司 SINOPHARM MC HOSPITAL SERVICE CO., LTD.
通伊欧轮胎(上海)贸易有限公司 TOYO TIRE (SHANGHAI) CO., LTD.
菱华商业(上海)有限公司 TREDIA CHINA CO., LTD.
上海菱威深信息技术有限公司 I-VISION SHANGHAI CO., LTD.
大连亚惠快餐有限公司 DALIAN ACASIA FAST FOODS CO., LTD.
亚谷瑞贸易(北京)有限公司 AGREX (BEIJING) CO., LTD.
浙江大菱海洋食品有限公司 ZHEJIANG DALING SEAFOOD CO., LTD.
上海山崎食品有限公司 SHANGHAI YAMAZAKI FOODS CO., LTD.

以下是三菱商事在中国的部分主要投资项目

食品、消费产业 事业	上海山崎面包有限公司 SHANGHAI YAMAZAKI BAKING CO., LTD.
	味菱食品科技有限公司 MCLS (CHINA) INC.
	沈阳华美食品有限公司 SHENYANG HUAMEI FOOD CO., LTD.
	三菱商事物流 (上海) 有限公司 MITSUBISHI CORPORATION LT(SHANGHAI) CO., LTD.
	迈羲医疗器械 (上海) 有限公司 MC HEALTHCARE CHINA CO., LTD.
	美客思贸易 (上海) 有限公司 KAMAKURA SHIRTS (SHANGHAI) CO., LTD.
	香港捷菱有限公司 MC MARKETING & SALES (HONG KONG) LIMITED

电力、基础设施、 移动事业	水翼 (上海) 成套工程有限公司 SWING SHANGHAI ENGINEERING CO., LTD.
	DIAMOND GENERATING ASIA LTD.
	常州宝菱重工机械有限公司 CHANGZHOU BAOLING HEAVY & INDUSTRY MACHINERY CO., LTD.
	上海凯盛节能工程技术有限公司 SHANGHAI TRIUMPH ENERGY CONSERVATION ENGINEERINGCO., LTD.
	日立建机 (中国) 有限公司 HITACHI CONSTRUCTION MACHINERY (CHINA) CO., LTD.
	日立建机 (上海) 有限公司 HITACHI CONSTRUCTION MACHINERY (SHANGHAI) CO., LTD.
	宏菱融资租赁 (上海) 有限公司 HONGLING FINANCIAL LEASING CO., LTD.
	广汽三菱汽车有限公司 GAC MITSUBISHI MOTORS CO., LTD.
	沈阳航天三菱汽车发动机制造有限公司 SHENYANG AEROSPACE MITSUBISHI MOTORS ENGINE MANUFACTURING CO., LTD.
	菱商 (上海) 贸易有限公司 RYOSHO MACHINERY (SHANGHAI) CO., LTD.
	三菱电梯香港有限公司 MITSUBISHI ELEVATOR HONG KONG COMPANY LTD.

都市开发事业	徐州万旭置业有限公司 XUZHOU WANXU ZHIYE CO., LTD.
	常州泓成房地产开发有限公司 CHNAGZHOU HONGCHENG REAL ESTATE DEVELOPMENT CO., LTD.
	常州绪阳房地产开发有限公司 CHNAGZHOU XUYANG REAL ESTATE DEVELOPMENT CO., LTD.
	太原碧扬房地产开发有限公司 TAIYUAN BIYANG REALESTATE DEVELOPMENT CO., LTD.

化学	创菱 (上海) 管理有限公司 IVICT (SHANGHAI) CO., LTD.
	创菱 (上海) 管理有限公司 北京分公司 IVICT (SHANGHAI) CO., LTD.BEIJING BRANCH
	创菱 (广州) 贸易有限公司 IVICT (GUANG ZHOU) CO., LTD.
	三菱商事 (天津) 有限公司 Mitsubishi Corporation (Tianjing) Ltd.
	东曹 (广州) 化工有限公司 TOSOH (GUANGZHOU) CHEMICAL INDUSTRIES, INC.
	环菱中央化学管理有限公司 HUAN LING CHUO KAGAKU CO., LTD.

1972 ▶ 2000



- 1972年

三菱企业集团三首脑首次访华。三菱商事（藤野社长），三菱重工业及三菱银行最高领导人拜会周恩来总理及日中友好协会会长廖承志等。
Top executives representing Mitsubishi Group visit Premier Zhou Enlai for the first time.
- 1978年

获得上海宝山总厂火电设备订单。
MC receives power plant order from Shanghai Baoshan Steel Plant.
- 1980年

设立北京事务所。
Beijing Office established.
- 1981年

设立上海、大连、广州事务所。
Shanghai, Dalian and Guangzhou Offices established.
- 1984年

三菱企业集团32家公司与中国科学技术交流中心签订科学技术交流协议。
32 companies from Mitsubishi Group signed cooperation agreement with China Science Centre.

设立天津事务所及深圳代表处。
Tianjin and Shenzhen Offices established.
- 1986–1989年

设立南京、青岛、厦门事务所。
Nanjing, Shenyang, Qingdao and Xiamen Offices established.

- 1992年

设立上海商菱贸易有限公司（现名：三菱商事（上海）有限公司）。
Shanghai Shangling Trading Company established (present name: Mitsubishi Corporation (Shanghai) Ltd.)
- 1995年

上海宝钢集团签订交流协议。
Cooperation agreement with Shanghai Baosteel signed.

成立商菱（中国）投资有限公司（现名：三菱商事（中国）有限公司）。
Shangling (China) Investment Ltd. established (present name: Mitsubishi Corporation China Co., Ltd.).
- 1997年

设立成都事务所。
Chengdu Offices established.

三菱集团社长访华团（三菱商事（榎原社长），三菱重工业，东京三菱银行，三菱综合材料，旭硝子，三菱电机，三菱自动车工业，三菱仓库），分别拜会江泽民主席，朱镕基副总理。
Mitsubishi Group Executives (Mitsubishi Corporation, etc.) meet President Jiang Zemin and Vice Premier Zhu Rongji.



- 1998年

江泽民主席访日，参观三菱集团展览。
President Jiang Zemin visits Mitsubishi Group exhibition during his stay in Japan.
- 与五矿集团签署建立战略合作伙伴关系协议书。
Strategic partnership agreement signed with China Min-metals Corporation.

开始持续资助日本学研究项目。
Support launched for Japanese Study Centre project.
- 2007年

参股中国粮油控股有限公司。
Shares of China Agri-Industries Holdings Limited purchased.

参股中国神华能源股份有限公司。
Shares of China Shenhua Energy Company Limited purchased.
- 2008年

BTV卫视台《五百强在北京》栏目播出《商海征途——三菱商事特集》。
<Fortune 500 in Beijing> BTV broadcasts a program introducing MC.

2001 ▶ 2010

- 2002年

榎原社长率领三菱集团首脑访华团（共16家）一行拜会了江泽民主席，并拜访了上海市韩正市长。
Top executives representing Mitsubishi Group (16 companies) meet President Jiang Zemin and Han Zheng, Mayor of Shanghai.
- 2003年

成立三菱商事（青岛）有限公司。
Mitsubishi (Qingdao) Ltd. established.

开始持续投资绿化与助学兼顾的植树项目。
Project combining tree planting and student support launched.
- 2004年

与中粮集团签订战略合作协议。
Strategic cooperation agreement signed with COFCO.
- 2005年

在北京成立三菱商事（中国）商业有限公司。
Mitsubishi Corporation (China) Commerce Co., Ltd. established in Beijing.

- 获得中国绿化公益事业特别奖。
Special Rewards for China's afforestation public utility.
- 2009年

小岛社长就任上海市市长国际企业家咨询会议顾问。
President Mr. Kojima becomes a member of International Business Leader Advisory Council (IBLAC) for the mayor of Shanghai.

- 与山东省人民政府签署全面战略合作协议。
Strategic partnership agreement signed with Shandong Province.
- 2010年

佐々木会长出任博鳌亚洲论坛理事。
Chairman Mr. Sasaki becomes a board member of BOAO FORUM For Asia.

2011 ▶ 现在

- 2011年

获得2010生态中国贡献奖。
Rewards for 2010 Eco-China Contribution Award.

与四川省人民政府签订全面战略合作协议。
Strategic partnership agreement signed with Sichuan Province.

与国家开发银行签署战略合作协议。
Strategic partnership agreement signed with China Development Bank.

三菱企业集团17家公司与山东省人民政府签署全面战略合作协议。
17 companies from Mitsubishi Group signed strategic partnership agreement with Shandong Province.

设立三菱商事（上海）有限公司武汉分公司。
Mitsubishi Corporation (Shanghai) Ltd. Wuhan Branch established.
- 2012年

在中国发行人民币短期融资券。
Establishment of the Renminbi-denominated Commercial Paper Programme in China.

向三菱商事（中国）有限公司增资2亿美元。
Capital of Mitsubishi Corporation (China) Co., Ltd. increased by 200 million dollars.
- 2013年

在上海设立三菱商事首个海外展示厅“三菱商事（上海）中心（日本商品中心）”
“Mitsubishi corporation (shanghai) Center (Japan Products Center)”is established in Shanghai as the first overseas exhibition hall.
- 2014年

三菱商事（上海）有限公司获得中国（上海）自由贸易试验区管理委员会授予的“亚太区运营中心”试点企业称号。
Mitsubishi Corporation (Shanghai) Ltd. was awarded the title of “Asia-Pacific Operation Center pilot enterprise” by the Management Committee of China (Shanghai) Pilot Free Trade Zone.
- 2015年

荣获共青团中央、中国教育部、工信部共同主办的“CSR中国教育奖”中的“最佳CSR创新奖”。
Won the “Best CSR Innovation Prize” of “CSR China Education Award”.
- 2017年

平井前中国总代表荣获上海市“白玉兰荣誉奖”。
Mr.Hirai, former Chief Representative for China was awarded the “Magnolia Gold Award” by Shanghai government.

平井前中国总代表受邀就任陕西省人民政府国际高级经济顾问。
Mr.Hirai, former Chief Representative for China becomes The International Senior Economic Counselor of Shanxi government.

平井前中国总代表受邀就任武汉市招才顾问。
Mr.Hirai, former Chief Representative for China becomes The Adviser for Recruiting Talents of Wuhan government.

- 2018年

平井前中国总代表受邀就任广东省“跨国公司直通车”委员。
Mr.Hirai, former Chief Representative for China becomes The Multinational Corporation Adviser for Governor of Guangdong Province Government.

平井前中国总代表受邀就任四川省日本经济合作顾问委员会委员。
Mr.Hirai, former Chief Representative for China becomes council of Japan economic Co-operation advisers of Sichuan government.
- 2019年

与广州市人民政府签订全面战略合作协议。
Strategic partnership agreement signed with Guangzhou City.
- 2020年

平井前中国总代表荣获上海市“荣誉市民”。
Mr.Hirai, former Chief Representative for China was awarded as “Honorary Citizen of Shanghai” by Shanghai Municipal Government.

三菱商事（上海）有限公司获得中国（上海）自由贸易试验区管理委员会授予的“30年卓越贡献企业”称号。平井前中国总代表被授予“30周年杰出贡献企业家”的称号。
Mitsubishi Corporation (Shanghai) Ltd. was awarded the title of “30 years Excellent Contribution Enterprise” and Mr.Hirai, former Chief Representative for China was awarded as “30 years Excellent Contribution Entrepreneur” by China (Shanghai) Pilot Free Trade Zone Administration.
- 三菱商事（上海）有限公司获得中国（上海）自由贸易试验区管理委员会授予的“全球运营商计划”企业称号。
Mitsubishi Corporation (Shanghai) Ltd. was awarded the title of “Global Operation Programme (GOP) enterprise” by China (Shanghai) Pilot Free Trade Zone Administration.

- 2021年

与重庆市商务委员会签订战略合作协议。
Strategic partnership agreement signed with Chongqing Municipal Commission of Commerce.

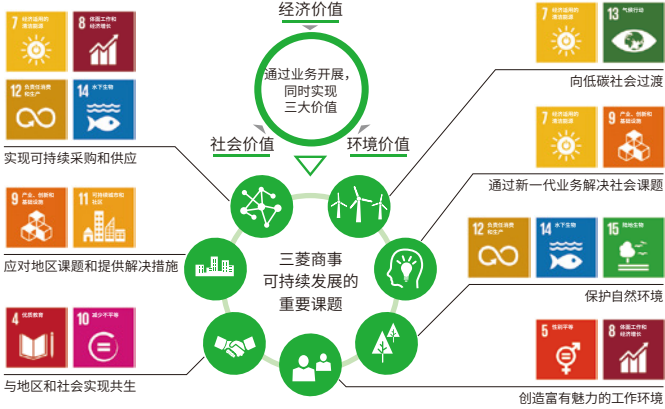
中塚中国总代表受邀就任广东省“跨国公司直通车”委员。
Mr. Nakatsuka, Chief Representative for China becomes The Multinational Corporation Adviser for Governor of Guangdong Province Government.
- 中塚中国总代表受邀就任陕西省人民政府国际高级经济顾问。
Mr. Nakatsuka, Chief Representative for China becomes The International Senior Economic Counselor of Shanxi government.
- 2022年

中塚中国总代表受邀就任山东省威海市市长国际经济咨询委员会委员。
Mr. Nakatsuka, Chief Representative for China becomes the member of The International Economic Advisory Committee of the mayor of Weihai city, Shandong province.

地球环境与社会课题，每年都在不断的变化。以广泛的产业为业务领域开展业务的三菱商事，在及时把握地球环境与社会课题的基础上，通过各项业务活动为解决这些课题做贡献，同时，力争不断创造“经济价值”，“社会价值”，“环境价值”。

Global sustainability issues have significantly evolved over the years and continue to change today.MC recognizes the importance of staying attuned to changes within the global environment and society, and we aim to generate societal and environmental value by addressing key sustainability issues through our business activities which span numerous industrial sectors.

以经营理念“三纲领”为依据，为实现真正富裕的社会为目标，与地区社会和国际社会共同发展的热忱已经深深扎根于三菱商事的企业文化中。三菱商事在中国围绕“实现包容性的社会”、“培养下一代和使其自立”、“环保”三大核心广泛开展社会贡献活动，同时实施“灾害支援”，并重视其持续性和鼓励员工亲身参与。同时，作为在世界各地开展事业的全球性企业，为了对地区社会的发展尽一份力量，而实施符合当地需要的区域贡献策略。



A fundamental principle of MC's corporate culture is to contribute to the wealth of societies by growing with the local and international communities in which we work. MC focuses on philanthropic activities that are in line with three overarching themes: "Realizing an Inclusive Society," "Empowering the Next Generation" and "Conserving the Environment." In addition, MC provides Support for Natural Disasters .MC also actively supports the participation of our employees in philanthropic activities, and is committed to social contributions that meet local needs in order to help the development of local communities.

实现兼容并包的社会



三菱商事的目标是建立一个人人都能充满生机，有所发展的社会。在今天这个多种生活方式共存的时代，我们将继续为实现相互尊重的共生社会而开展活动。

MC aims to help realize a society where everyone can play an active role. We are continuing our activities to contribute toward a world where everyone can respect each other and coexist regardless of background, physical condition or way of life.

主要活动
Main Activities

- “三菱友谊杯”残疾人民间足球大赛 (2015~), 关注残障人士的生活, 促进民间残疾人体育事业, 为丰富他们的业余生活尽绵薄之力
Since 2015, MC has been sponsoring the “Mitsubishi Friendship Cup,” in an effort to support sports for people with disabilities. Through supporting MC is hoping to enhance the grassroots participation of the sports for people with disabilities, and to enrich their lives
- 天使知音沙龙 (2019~) : 关爱自闭症青少年康复和教育, 帮助其融入社会
Rehabilitaion and Education Support Program for Autism Children through the“Angel salon”project(2019~)
- 听障学生融合教育支援项目 (2019~2020) : 关爱听障学生, 帮助其在普通学校进行正常的学习和生活
Support for the Learning Environment Improvement Program for hearing impaired children who learn in usual class (2019~2020)



2019年男子盲人足球比赛
Blind football match of 2019



天使知音沙龙
The “Angel salon” project



听障学生融合教育支援项目
Support for the Learning Environment Improvement Program for hearing impaired children

培养下一代和使其自立



为了培养肩负我们未来的下一代，支持他们的成长和自立，三菱商事积极致力于教育、研究、能力开发的支援等工作。

MC will actively support education, research and capacity development in order to contribute to the growth and self-reliance of the next generation who will be responsible for tomorrow's society.

主要活动
Main Activities

- 北京日本学研究中心的支援项目 (2005~)
the Beijing Center for Japanese Studies(2005~)
- 复旦大学、同济大学及上海交通大学的交换留学项目
the Student-Exchange Project between Seikei University, Japan and Shanghai Tongji University, Fudan University and Shanghai Jiao Tong University, China
- 山东省大学生访日团
University students (from Shandong Province) visit Japan
- 四川外国语大学的日语教育支援
Support for Japanese Language Education at Sichuan Foreign Studies University
- 中日学生手语交流支援
Lambda Sign Language Communication Support for Chinese and Japanese Students
- 三菱商事海外奖学金制度(上海外国语大学、北京大学等) (2000~)
MC International Scholarship(Shanghai International Studies University,Peking University, etc.)(2000~)



第十一届中日学生手语交流会@南京
The Eleventh Sino-Japanese exchange of sign language@Nanjing



上海外国语大学奖学金项目
MC International Scholarship program of Shanghai International Studies University



支援北京日本学研究中心日本学研究项目
Support program for the Japanese Studies at Beijing Center for Japanese Studies

环保与社会



为了向未来传达地球环境无可替代的重要性，实现人与自然和谐共处的富裕社会，三菱商事致力于保护地球环境。

MC is committed to environmental conservation efforts in order to pass on our irreplaceable Earth to future generations and to realize a prosperous society where people live in harmony with nature.

主要活动
Main Activities

- 曾在贵州、河北和内蒙古等地开展植树活动 (2003~), 旨在对应沙尘暴、沙漠化以及空气污染等环境问题
In order to make contributions to addressing the sand storm, desertification, air pollution and other environmental issues , MC, since 2003, has planted trees in Guizhou Province, Hebei Province and Inner Mongolia respectively
- 组织员工开展了捡拾垃圾的活动, 为青岛地区社会的环境保护贡献力量
In Qingdao, for example, in response to the call of the local government, staff members were organized as volunteers to carry out continuous garbage collection activities and contribute to the environmental protection of the local society
- 资助北京湿地自然保护区的候鸟等野生动物保护宣传项目 (2021~), 促进生物多样性相关教育
Support for the Project to Publicize Migratory Birds and other Wild Animals Conservation in Beijing Wetland Nature Reserve, to promote biodiversity education(2021 ~)



青岛海边捡拾垃圾
Volunteers from Mitsubishi Corporation (Qingdao) pick up trash on the beach



北京湿地自然保护区野生动物保护宣传项目
Wetland Nature Reserve Wildlife Conservation Publicity Project in Beijing

文化与艺术



中国和日本在文化与艺术方面有着很深的渊源，三菱商事非常重视在这些领域开展多种多样的社会贡献活动。

China and Japan have deep roots in terms of culture and art. MC attaches great importance to a variety of social contribution activities.

主要活动
 Main Activities

- 日本歌舞伎大师在中国的昆剧公演
Japanese Kabuki masters' Kunqu Opera performances in China
- 中日青少年绘画大赛
the Sino-Japanese Youth Photography Contest and other activities
- 鲁迅纪念馆进行资金方面的援助 (2012~)，用于维护文化财产和支持相关研究和中日交流
MC has been providing financial assistance to the Lu Xun Memorial since 2012 to safeguard cultural property and support related research and the exchanges between China and Japan



上海鲁迅纪念馆
Memorial Hall of Lu Xun



三菱商事（上海）中心，日本商品中心
MITSUBISHI CORPORATION (SHANGHAI) CENTER, JAPAN PRODUCTS CENTER

灾害支援



三菱商事致力开展灾害时的紧急支援活动以及支援灾区的重建，关注新冠疫情下弱势群体的需求，履行作为社会一员的职责。

As a member of the communities in which we live and work, MC provides emergency support in the event of natural disasters, focusing on the needs of vulnerable groups facing COVID-19.

主要活动
 Main Activities

- 2003年的SARS、2008年的南方雪灾、四川省汶川大地震、2010年的青海玉树地震、2013年的四川雅安地震、2014年云南鲁甸地震、2021年山西暴雨灾害等自然灾害的援助
MC provided assistances to address the natural disasters of SARS in 2003, snowstorm in the south of China in 2008, Wenchuan earthquake in Sichuan Province, Yushu earthquake in Qinghai Province in 2010, Ya'an earthquake in Sichuan Province in 2013, Ludian earthquake in Yunnan Province in 2014, and heavy rainfall disaster in Shanxi Proviace in 2021
- 2022年新冠疫情期间向上海浦东养老院捐赠空气消毒机，帮助养老院长辈们平安渡过这个特殊时期
A donation of air sterilizers to the Pudong nursing home in Shanghai during the coronavirus pandemic in 2022 helped the elderly generation make it through this special period



浦东养老院捐赠项目
Pudong Nursing Home Donation Project

概况

About Us

公司名称 Company Name	三菱商事株式会社 Mitsubishi Corporation www.mitsubishicorp.com/jp/ja/
成立日期 Established	1954年7月1日 July 1, 1954
资 本 金 Capital	204,446,667,326日元 Japanese Yen 204,446,667,326
董 事 长 Chairman of the Board	垣内 威彦 Takehiko Kakiuchi
代表董事兼总裁 Representative Director, President and CEO	中西 胜也 Katsuya Nakanishi
总部地址 Headquarters Address	三菱商事大楼 千100-8086 东京都千代田区丸之内二丁目3番1号（注册地址） Mitsubishi Shoji Building, 3-1, Marunouchi 2-chome, Chiyoda-ku, Tokyo 100-8086, Japan (Registered Address) 丸之内公园大楼 千100-8086 东京都千代田区丸之内二丁目6番1号 Marunouchi Park Building, 6-1, Marunouchi 2-chome, Chiyoda-ku, Tokyo 100-8086, Japan
员工人数 Number of Employees	单独5,571人 / 合并结算80,728人 Parent company 5,571 / Consolidated 80,728 (截至2022年3月31日 as of Mar.31, 2022)
全球网络 Global Network	日本国内全公司分支机构 (Number of MC offices and subsidiaries in Japan) : 9 海外全公司分支机构 (Number of MC offices and subsidiaries overseas) : 112 合并结算公司 (Consolidated Subsidiaries and Affiliates) : 1,674 (截至2022年3月31日 as of Mar.31, 2022)

三菱金曜会成员 Mitsubishi Kinyokai Companies

- 三菱重工业株式会社
Mitsubishi Heavy Industries, Ltd.
- 株式会社三菱化学控股集团
Mitsubishi Chemical Holdings Corporation
- 明治安田生命保险相互会社
Meiji Yasuda Life Insurance Co.
- 三菱仓库株式会社
Mitsubishi Logistics Corp.
- AGC株式会社
AGC Inc.
- 麒麟控股株式会社
Kirin Holdings Company, Limited
- 株式会社三菱UFJ銀行
MUFG Bank, Ltd.
- 三菱化学株式会社
Mitsubishi Chemical Corp.
- 株式会社尼康
Nikon Corp.
- 三菱UFJ信托银行株式会社
Mitsubishi UFJ Trust and Banking Corp.
- 三菱制钢株式会社
Mitsubishi Steel Mfg. Co., Ltd.
- 三菱汽车工业株式会社
Mitsubishi Motors Corp.
- 三菱综合材料株式会社
Mitsubishi Materials Corp.
- 三菱制纸株式会社
Mitsubishi Paper Mills Limited
- 三菱扶桑卡客车株式会社
Mitsubishi Fuso Truck & Bus Corp.
- 三菱地所株式会社
Mitsubishi Estate Co., Ltd.
- 三菱化工机株式会社
Mitsubishi Kakoki Kaisha, Ltd.
- 株式会社PS三菱
P.S. Mitsubishi Construction Co., Ltd.
- 三菱电机株式会社
Mitsubishi Electric Corp.
- 三菱瓦斯化学株式会社
Mitsubishi Gas Chemical Company, Inc.
- 株式会社三菱综合研究所
Mitsubishi Research Institute, Inc.
- 三菱商事株式会社
Mitsubishi Corporation
- 日本邮船株式会社
Nippon Yusen Kabushiki Kaisha
- 三菱UFJ证券控股株式会社
Mitsubishi UFJ Securities Holdings Co., Ltd.
- ENEOS控股株式会社
ENEOS Holdings, Inc.
- 东京海上日动火灾保险株式会社
Tokio Marine & Nichido Fire Insurance Co., Ltd.

