

Moving Forward with Society

Mitsubishi Corporation's Social Contributions



Issued: February, 2016
Publishing office:
CSR & Environmental Affairs Dept., Mitsubishi Corporation
(3-1, Marunouchi 2-Chome, Chiyoda-ku, Tokyo)
URL: <http://www.mitsubishicorp.com/jp/en/csr/>

Unauthorized reproduction of this document is strictly prohibited.
©2016 Mitsubishi Corporation



Contents

Philosophy on Social Contributions – Top Message 01

Mitsubishi Corporation’s Social Contributions 02

- Basic Philosophy
- Three Corporate Principles
- Origins of Mitsubishi Corporation’s Social Contributions

Special Feature: Supporting Challenged Sports – DREAM AS ONE. 04

Introduction to Activities 06

- Global Environment
- Public Welfare
- Education
- International Exchange and Contributions
- Culture and Arts
- Great East Japan Earthquake Relief and Recovery Activities
- Employee Volunteer Activities
- MC FOREST

I was a Volunteer! 28

Social Contribution Activities by Area 30

By-the-Numbers Look at MC’s Social Contributions 32

A Look Back at MC’s Social Contributions 34

Philosophy on Social Contributions
– Top Message

Ken Kobayashi
President and Chief Executive Officer

March 2015



More than 40 years have passed since social contribution activities at Mitsubishi Corporation (MC) gained initial impetus following a speech at the World Trade Center in 1973 by MC President at the time Chujiro Fujino. The global business environment has changed drastically during that period and the responsibility of companies toward society has increasingly been called into question. MC has responded with flexibility to the changes in the business environment on the one hand while taking a consistent approach to fulfilling responsibility to society on the other. This is testament to the fact that the spirit of the Three Corporate Principles – Corporate Responsibility to Society; Integrity and Fairness; and Global Understanding Through Business – has been passed down in an unbroken line over the years since our founding.

MC’s social contribution activities have grown over these 40-plus years into the variety of fields we see today, with a strong emphasis on employee participation and continuity. Those qualities have been central to our support for the relief and recovery efforts following the Great East Japan Earthquake as well. In the four years since the disaster, over 3,500 MC and MC Group employees have taken part in volunteer activities. Personally, I have been to the disaster-affected region more than 10 times to date and each time it makes me incredibly proud to witness the unwavering spirit of our employees who believe strongly in doing their part.

On July 1, 2014, MC marked 60 years since the Great Merger that reunited it in 1954, seven years after the post-war dissolution of Japan’s family-owned conglomerates. In commemorating this milestone, we clarified our commitment to walk hand-in-hand with society and decided to strengthen our support for challenged sports. This decision is in keeping with our efforts to enhance and expand our social contribution activities. Over the years we have assisted with the advancement of challenged sports, most notably the Oita International Wheelchair Marathon, one of the world’s premier wheelchair marathon events, and cerebral palsy 7-a-side soccer. We will continue to promote and raise awareness of challenged sports, so that as many people as possible can enjoy them and appreciate the courage, hope, and inspiration they provide. Greater understanding of these sports and the incredible athletes who take part in them can only lead to more support in the future.

Having now passed its 60-year milestone, MC will continue contributing to society in the broadest possible terms and ensure that its corporate growth always remains in step with the growth of local communities.



Volunteers supporting recovery efforts in Minamisanriku, Miyagi Prefecture in June 2013

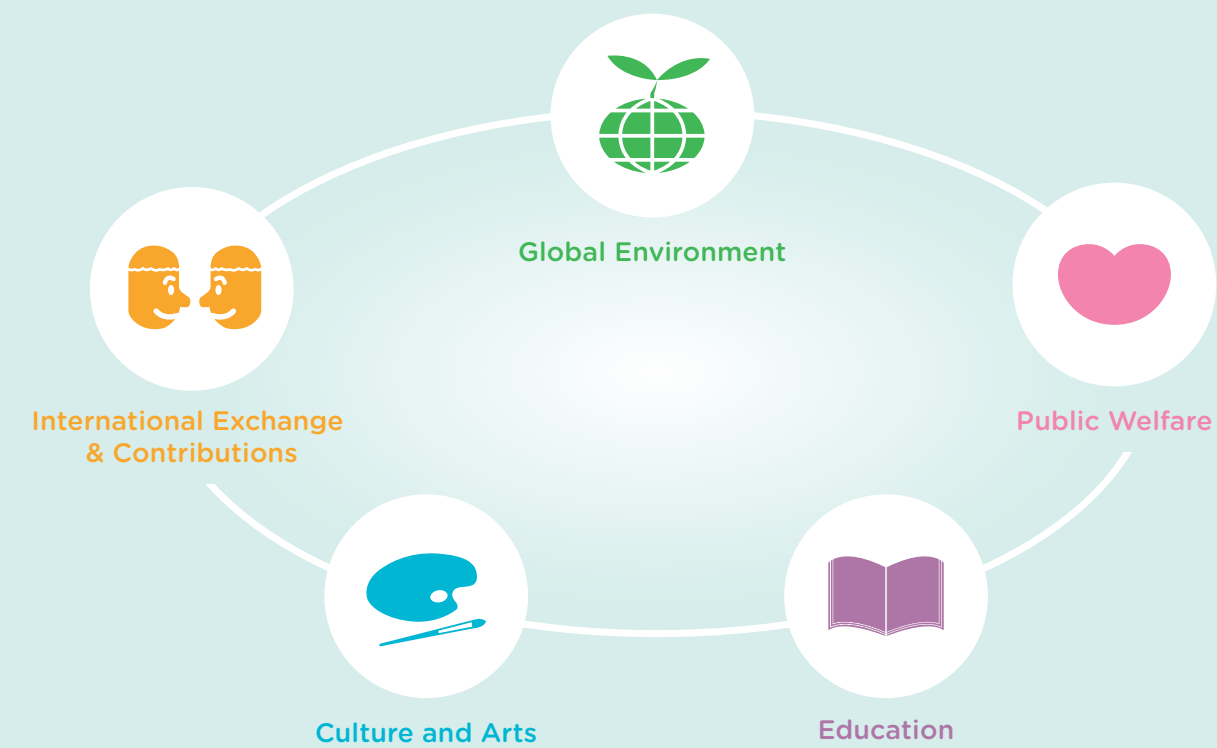
Mitsubishi Corporation's Social Contributions

Doing What We Can for Society and Our Planet

The idea of growing together with local and international communities in order to contribute to building truly prosperous, sustainable societies around the world is deeply rooted in the corporate culture of MC and anchored in the Three Corporate Principles, our company's guiding philosophy. It was 1973 when MC established an office to oversee social and environmental affairs based on an understanding that "As good corporate citizens, companies should actively carry out programs to contribute to society, and the expense of these programs should be borne as part of the social cost of doing business, before reaping any profits." Ever since then, we have been promoting self-driven social contribution activities as a means to contribute to the creation of a more abundant society.

Basic Policy

Understanding what it means to be a good corporate citizen, we engage in a wide range of activities that contribute to the well-being of communities around the world.

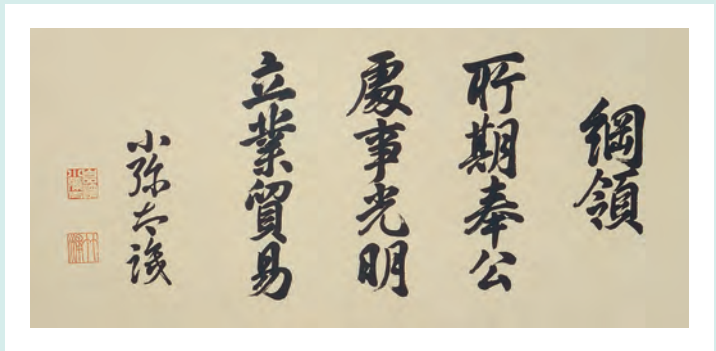


Basic Policy of Social Contributions

MC's social contributions focus on sustainable programs and typically involve volunteer work by our employees around the world. They are, mainly conducted in the following key areas: Global Environment, Public Welfare, Education, Culture and Arts, and International Exchange and Contributions.

Three Corporate Principles

The Three Corporate Principles were established in 1934 as the original Mitsubishi Corporation's code of conduct. Although that company was dissolved in 1947, the Three Corporate Principles remain as the guiding philosophy of our present-day Mitsubishi Corporation. Today, their spirit lives on in each and every member of the MC family.



Corporate Responsibility to Society

Shoki Hoko

Strive to enrich society, both materially and spiritually, while contributing towards the preservation of the global environment.

Integrity and Fairness

Shoji Komei

Maintain principles of transparency and openness, conducting business with integrity and fairness.

Global Understanding Through Business

Ritsugyo Boeki

Expand business, based on an all-encompassing global perspective.

Origins of MC's Social Contributions

On July 19, 1973, MC president Chujiro Fujino delivered a speech at the World Trade Center, during which he underscored the importance of social contributions. Inspired by its leader's words, MC established an office to oversee social and environmental affairs that October, thus marking the beginning of a serious commitment to CSR. Below is an excerpt from President Fujino's speech, addressing the origins and significance of MC's social contribution activities.



Chujiro Fujino,
former president of MC

On "Corporate Responsibility"

In prosperous times we bear witness to major changes in values concerning the way people live, and at the same time, the strain caused by periods of economic growth add momentum to this, heralding the need for companies, particularly large corporations, to conduct a fundamental rethink of their stance toward social responsibility. Notably, a large corporation's reason for existing should not be judged by the size of its period profit or loss. Rather, the value of its existence should be judged on whether or not it has a structure flexible enough to adjust to changes in conditions based on long-term dynamism and a long-term view. Accordingly, a company should only be free to enjoy the profit it gains after first taking responsibility for the tangible and intangible social costs generated through its activities and providing services to society in its capacity as a corporation.

Going forward, I believe that each corporation ought to make public how it will bear the social costs of its endeavors as well as how it will establish an environment that does not oppress local residents or individuals by aligning with their freedoms. In addition, since by definition a corporation can only exist through the pursuit of profit, it will not survive long if its manner of fulfilling social responsibility is merely to conduct charitable business. A corporation must be corporate-like in actively taking on projects in consideration of the breakeven point that are expected to be profitable over the long term if not the short term. It would be perfect if each project undertaken involved the development of information, technology or equipment that was in some way connected to the welfare of the people.

DREAM AS ONE.

Project in Support of Challenged Sports

We hope to share the dreams and excitement
with as many people as possible by
supporting the advancement of challenged sports.

The Three Corporate Principles have been MC's corporate philosophy since the company's foundation, and we continue to value our role as a responsible member of society. Inspired by the convictions of company president Chujiro Fujino that "companies should bear the social cost of doing business before reaping any profits," in 1973 MC established an office specifically to oversee the company's social and environmental affairs. This was the start of our social contribution activities, which are also based on our Three Corporate Principles.

These activities and the philosophy behind them include a commitment to the support and welfare of people with impairments, a commitment that began when MC became acquainted with Japan Sun Industries. Japan Sun Industries is located in Beppu City, Oita Prefecture. It was established by Dr. Yutaka Nakamura to help people with impairments become more self-reliant, active members of society. We started providing support to Japan Sun Industries in 1979, and in 1983 we jointly established the information processing company, Mitsubishi Shoji & Sun Co., Ltd. In the more than three decades since, we have continued to not only provide disabled people with quality-of-life support, but also to help them find employment in IT fields. Our efforts have played a part in giving them greater independence. Dr. Nakamura was passionately involved in promoting challenged sports, and it was his idea to hold a wheelchair marathon in Oita Prefecture in 1981. Since then, the Oita International Wheelchair Marathon has been held annually and has grown into a major international event. MC continues to be a proud sponsor.

In 2014, MC celebrated the 60th anniversary of the merger that reunited the company following its post-war dissolution. To help mark this anniversary, we decided to enhance our support for challenged sports.

"We want to give more people with impairments opportunities to enjoy sports."

"By sharing the courage, hope, and inspirations of para-athletes, we hope to encourage more people and businesses to get involved and support these amazing activities."

By encouraging the involvement of supporters and athletes alike, we can come together and dream as one. That is our belief.

1

Helping Challenged Sports to Grow and Flourish

We will provide opportunities for as many people as possible to enjoy challenged sports, including children with congenital disabilities.



Sports Classes for Children with Disabilities

We will hold sports classes and 7-a-side soccer schools for children with cerebral palsy.

*Cooperating organizations: Tokyo YMCA, Japan Cerebral Palsy Football 7-a-side Association, etc.



Sports Events

By hosting a variety of interactive events that are open to all people, regardless of impairments, MC will continue to promote and increase awareness of challenged sports.

*Cooperating organizations: Japanese Para-Sports Association, Tokyo Sports Association for the Disabled, etc.

2

Raising Awareness of Challenged Sports

We will raise awareness of challenged sports by giving our employees and fellow citizens the chance to get involved, whether as volunteers or participants.



Seminars (Volunteer Training Courses)

We will periodically hold foundation seminars on challenged sports and volunteer training courses. We will also promote involvement by volunteers in various types of competitions.

*Cooperating organizations: Japanese Para-Sports Association, Tokyo Sports Association for the Disabled, etc.



Competitions

We will continue to assist in the development of athletes by sponsoring the Oita International Wheelchair Marathon and holding 7-a-side soccer tournaments for people with cerebral palsy. We will also host athletics competitions for athletes with impairments.

*Cooperating organizations: Oita Prefecture, Japan Cerebral Palsy Football 7-a-side Association, Japan Challenged Athletes Association, etc.

DREAM AS ONE. Charity Fund

We will tabulate volunteer activities with our "DREAM" virtual currency.
(1 time participating as a volunteer = 1 DREAM 🍌)



MC will convert the DREAMs into cash, which will be used to promote challenged sports.

Global Environment

At MC, we place great value on our planet's rich biodiversity and will continue to do our part to preserve and protect it, so that a healthy and prosperous global environment may be enjoyed by many generations to come.

Experimental Project in Tropical Forest Regeneration

1990
Malaysia, Brazil, Kenya and Indonesia

A Million New Trees to Help Regenerate Our Tropical Forests



Intended to protect our planet's biodiversity, the Aichi Targets were formulated at the tenth meeting of CBD COP10*, which was held in Nagoya in October 2010. The Nijyu-maruprojekuto (Double 20 Campaign) was devised to connect and support the many people who are working to achieve these targets by their deadline, the year 2020. MC is also assisting with this project by taking steps to protect biodiversity together with its many stakeholders.

* Conference of the Parties to the Convention on Biological Diversity

[The Miyawaki method for restoring tropical forests]



1 Research
Identify locally indigenous trees



2 Gathering of Seedlings
Obtain various seedlings that make up a tropical forest



3 Germination of Seedlings in Pots
Move the seedlings to pots in a nursery after they have sprouted



4 Intensive Mixed Planting
Conduct intensive mixed planting of the different seedlings at a ratio of two to three trees per square meter



5 Mulching
Place straw and hay around the seedlings



6 Follow-up
Weed for one or two years, but from around year three, simply monitor the area's natural development

Creating Forests to Protect Future Lives

Dr. Akira Miyawaki Professor Emeritus at Yokohama National University

In 1990, MC became the first Japanese company to set up a Global Environment Department. The department's first mission was to set up an experimental tropical forest regeneration project in Malaysian Borneo. I have been closely involved with this work for over 20 years now, during which time the scope of activities has expanded to Brazil, Kenya and Indonesia. Each of these regions has generated significant results. Our campaign is to swiftly generate forests that can protect biodiversity and bring life to any part of the world. I sincerely hope that these activities will be continued, and I remain committed to offering whatever assistance I can.



Tree-planting ceremony in Malaysia



Tree-planting in Brazil



Tree-planting in Indonesia ©OISCA

* Organization for Industrial Spiritual & Cultural Advancement

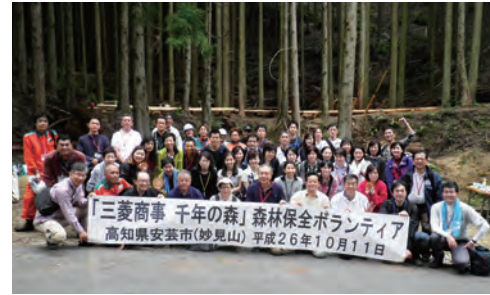
Forest Conservation Activities in Japan

Forest Conservation Project “Mitsubishi Corporation Thousand Year Forest”



2009
Japan

Since 2009, MC has been involved in a forest development business in Aki City, Kochi Prefecture, the birthplace of Mitsubishi founder Yataro Iwasaki. This is MC's first forest conservation initiative in Japan. To help protect the local environment, MC takes forestland in Aki City into its care, as company-owned forest. In addition, a 263-hectare expanse of forest, which includes some land owned by Aki City, has been named the “Mitsubishi Corporation Thousand Year Forest.” It is also sometimes referred to as “Yataro's Forest.” MC intends to continue managing and conserving this forest for the foreseeable future. In addition to conservation efforts aimed at enhancing watershed and other beneficial functions of woodlands, MC's activities in the “Thousand Year Forest” include nature experience workshops and volunteer work opportunities for MC employees and members of the local community. Every year in October and November, 40 to 50 MC and MC Group Company employees and their families take part in volunteer conservation activities in the “Mitsubishi Corporation Thousand Year Forest.” Under the guidance of local forestry cooperatives, participants plant new trees and trim the branches of existing ones to ensure that all the vegetation is getting enough sunlight. The participants also have the opportunity to visit Yataro Iwasaki's hometown. These activities mean a great deal to MC, as they allow our company to give a little something back to the region that produced its founder.



Other Forest Conservation Activities

MC branches nationwide take the lead in conducting forest conservation activities that include the Tsukumo Forest (Kansai Branch / Osaka Prefecture), Miyagi Forest (Tohoku Branch / Miyagi Prefecture) and Kizuna Forest (Chugoku Branch / Hiroshima Prefecture).



Kansai Branch volunteers engaged in forest conservation activities



Chugoku Branch volunteers engaged in forest conservation activities



Planting trees with children dressed in local ethnic costumes

Biological model forest with China Green Foundation



2005
China

With the cooperation of the China Green Foundation, one of China's largest NGOs, MC is engaged in forestation work in Guizhou Province, Hebei Province, Inner Mongolia, and other areas. The aims of this work are to help preserve natural ecosystems and boost economic development in impoverished areas. In addition to harvesting fruit trees and other vegetation, MC is also assisting local farmers and providing educational support through exchanges with local elementary school students. MC volunteers from Japan, Beijing, Shanghai, Guangzhou, and other parts of China assist with the tree-planting.

Global Coral Reef Conservation Project



2005
Japan, Seychelles, Australia



This project has been approved as a partnership project by the Japan Committee of the United Nations Decade of Biodiversity (UNDB-J)

In commemoration of our 50th anniversary, in 2005 MC launched a global coral reef conservation project in Okinawa. In addition to providing financial support for research, this project includes a program to deepen understanding of environmental issues. The program involves the participation of volunteers recruited from inside and outside the company in investigative research activities.

In 2006, research began at both the United States' Midway Atoll National Wildlife Refuge and the Republic of Seychelles, an archipelago nation in the Indian Ocean. The Midway research came to an end in March 2011, and a new project in Australia's Great Barrier Reef was initiated. At present, MC is researching coral reef conservation from many different angles, focusing primarily on three locations: Okinawa, the Seychelles and Australia. Research on coral bleaching is being conducted at the Tropical Biosphere Research Center, which is part of the University of the Ryukyus in Motobucho, Okinawa. It is being led by one of the country's foremost authorities on coral research, Professor Yoshimi Suzuki from Shizuoka University's Graduate School of Science and Technology. In recognition of our ongoing support for this research, MC was awarded the Medal with Dark Blue Ribbon by the Japanese government in 2008. A research paper compiling the content of the research was also given the Best Paper Award by the International Society for Reef Studies in 2012.



Research being conducted in Okinawa



Project members in the Seychelles

An introduction to each regional project



[Okinawa, Japan]

MC conducts research to elucidate the causes and mechanism of the coral bleaching phenomenon, to conserve reef health, and to establish and disseminate bleaching recovery technologies. MC partakes in a program by which 10 company volunteers are dispatched twice a year.

[Seychelles]

MC conducts research and investigative activities on the ecology of various coral reefs of Curieuse Island and how they respond to environmental stress.

[Australia]

MC conducts field research on the impact of black band diseases on coral reefs in the Great Barrier Reef, in particular, assessing the role of seasonal dynamics, light, temperature and water quality.

Marunouchi Citizens Environment Forum



1993
Japan

MC has been cosponsoring the Marunouchi Citizens Environment Forum along with Tokio Marine & Nichido Fire Insurance Co., Ltd. since 1993. The aim of this forum is to raise environmental awareness among the general public. Many people have attended and taken part over the years, including employees, local citizens, and industry experts who give introductory-level lectures on a host of environmental issues.



At the Marunouchi Citizens Environment Forum in 2013 (Lecturer: Shinichi Takemura)

Sharing Research Findings with Industry, Academia and Private Citizens

Dr. Yoshimi Suzuki

Research Professor, Shizuoka University Graduate School of Science and Technology
Contributor to Oceanic State 2011 (Prime Minister's Award)

One scientific feature of the coral reef conservation project started in 2005 is a willingness to identify the factors causing coral bleaching without being restricted by conventional wisdom. Another unique feature is that the research is the product of cooperation between private citizens and companies as well as researchers, so the findings are shared between industry, academia and local residents. Employees from MC are actually taking part in the research activities as well. Everything we gain in natural science must be given back to the local communities. I hope that these research activities are continued, so that the successes derived from them may benefit as many lives as possible.



Public Welfare

At the core of MC's social contribution activities is its desire to help people with mental and physical impairments, so that they may live rewarding lives as equal members of society. But we do not stop there. We also pride ourselves in working with organizations and facilities that provide foster care and support for mothers and children.

Valuing Compassion and the Human Connection



Friendship Camp for Mothers and Children

1974
Japan

MC has been holding the Friendship Camp for Mothers and Children for single mothers and their children since 1974. The program gives children the chance to interact with nature and make new friends. The spring camp was initially held in Gifu Prefecture's Myogata Village, and the summer camp in Nagano Prefecture's Hakuba Village. In 1978, the spring camp was renamed the Spring Friendship Camp, which existed until 1999 and hosted children from foster care facilities in Tokyo. In 1983, the summer camp shifted to Gunma Prefecture's Minakami Town and then again in 1985 to Niigata Prefecture's Minamiuonuma City, where it continues to this day. The camp gives children the chance to play freely in a natural setting, while mothers can forget their everyday work and household duties, relax, and get to know one another. Participants take part in a variety of

programs such as mountain walks, water activities and making campfires. Employee volunteers spend several months training and attending meetings to prepare. One of the major features of this camp is that it is built together by the volunteers, mothers, and children. The volunteers leave aside their names and positions, and are given a camp name (nickname), which helps to break the ice and build closer relationships with the children. As of the summer of 2014, 16,845 mothers and children and 942 MC volunteers have attended the camp. It is a fine example of how MC's social contributions emphasize sustainable activities driven by employees.



A Place to Grow Together and Support One Another

Setsuko Kojima Research Fellow, Tokyo Council of Social Welfare

The Friendship Camp for Mothers and Children was established in 1974, meaning that for more than four decades it has provided a place for single-parent families to bond. I have taken part every year since the camp's inception, and it is always a deeply moving experience. More than 30 years have passed since MC employees started volunteering at the camp, which from what I hear has inspired the growth of other MC volunteer activities. I truly hope that this camp remains a permanent part of MC's social contributions, that it will always remind us to be compassionate and giving, and that it will forever unite local families and participants.



Oita International Wheelchair Marathon

1991
Japan

Since 1991, MC has been supporting the Oita International Wheelchair Marathon, which is hosted by Oita Prefecture and other sponsors. It was launched to celebrate the International Year of Disabled Persons in 1981. The event is one of the world's largest and most competitive sports events for people with impairments.

At MC, we encourage people with impairments to be active member of society. Employees volunteer to help organize the race. Their duties include preparing the course and facilities, and assisting the athletes. Our hope is that by participating in this event, we can help raise awareness of people with impairments and broaden international friendships.



Museum and Art Gallery Program

2005
Japan

This program is run in cooperation with museums and art galleries, offering people with impairments the opportunity to enjoy private, after-hours exhibitions. Over the 67 installments of this program, more than 10,000 people have taken part. From November 2005 to January 2015, it was run at the Tokyo National Museum, the National Museum of Western Art, the National Museum of Science and Nature, and the Science Museum.

YMCA International Charity Run

2008
Japan

The YMCA International Charity Run is held to support children with impairments and raise awareness and interest in disability issues. MC is in strong agreement with this event's objectives, and we have been its official sponsor since 2008. Many MC and MC Group Company employees participate as runners or volunteer to organize the event. Any donations raised are used for outdoor activity programs run by the YMCA, such as camps for children with impairments.



Work Skills Development Support for People with Severe Impairments "Tokyo Colony" and "Mitsubishi Shoji & Sun"

1979
Japan

In 1979, MC donated PCs for IT-skills training to the social welfare organization Tokyo Colony, and since 1993 we have continuously supported Tokyo Colony's at-home PC learning program for people with severe impairments.

MC began supporting Japan Sun Industries, a social welfare organization, in 1979, and in 1983 we teamed with Japan Sun to establish the joint venture company, Mitsubishi Shoji & Sun Co., Ltd. Our joint venture provides a wide scope of jobs to people with impairments, including PC data processing, multimedia contents creation, and on-demand printing.



Green Ribbon Running Festival

2006
Japan

Aiming to deepen friendships and help us better appreciate life and health, the Green Ribbon Running Festival has been held since 2006. Enabled runners are teamed with runners with impairments, including those who have undergone organ transplants. MC is one of the festival's original sponsors, and many MC and MC Group Company employees have either ran in or volunteered to help organize the event.

MC / Tokyo YMCA Fall Camp at Lake Yamanakako

2003
Japan

Since 2003, MC has assisted with an annual outdoor camp for children with learning disabilities (LD) that is planned and operated by Tokyo YMCA. Each year employees have volunteered as camp leaders. The camp offers children a variety of challenges designed to build self-confidence and increase communication skills through teamwork and friendship.



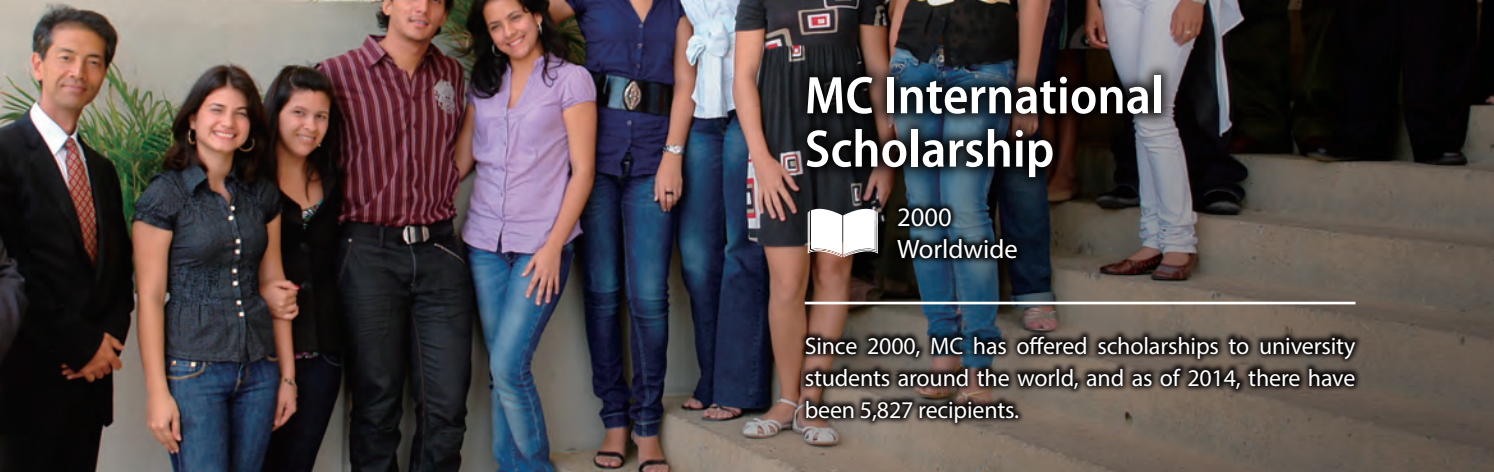
Soccer School (F.C. Tokyo / Vegalta Sendai)

2002
Japan

In 2002, MC began holding a soccer school for children living in foster-care facilities and mothers and children's homes in Tokyo and Sendai City. The school is run about twice a year under the guidance of coaches from the professional soccer clubs F.C. Tokyo and Vegalta Sendai. Every year, around 200 children take part. MC volunteers handle reception duties, prepare the grounds, and participate in mini games.

Education

To help nurture our youth and tomorrow's leaders, MC provides assistance in various fields of education. We also run scholarship programs for young people who wish to study in Japan or abroad.



MC International Scholarship

2000 Worldwide

Since 2000, MC has offered scholarships to university students around the world, and as of 2014, there have been 5,827 recipients.



Get-together in fiscal 2014 (on a visit to Old-Iwasaki-tei Garden)

Mitsubishi Corporation International Scholarship for Studies in Japan

1991 Japan

In 1991, MC instituted a scholarship program with the aim of supporting foreign students who have demonstrated the potential to become future global leaders. MC began expanding the program in 2008, and since then approximately 100 students have been awarded these scholarships each year. As of 2014, there have been a total of 1,007 recipients. MC also holds get-togethers and volunteer activities for the recipients and employees.



Valuing Three Treasures Gained as a Scholarship Recipient

Xiaofuer Narentuya 2012/2013 Recipient of an Mitsubishi Corporation International Scholarship for Studies in Japan

I was born in the Xinjiang Uyghur Autonomous Region, and I'm Oyrad-Mongolian; Graduated from Graduate School of Tokyo University of Foreign Studies. I was honored to be an Recipient of MC's International Scholarship for Studies in Japan from 2012 to 2013. I am grateful for given opportunities to participate a variety of international exchange events and volunteer activities, while remaining dedicated to my studies, research and teaching practice. I am extremely grateful for this scholarship, as is my family back home. I was so fortunate to get in Japan, and there are three things in particular that I gained will always be most precious gifts for me, which are friendship, determination and being gratitude.

The first is the debt I owe to the country and the close bond that I have developed with it. The second is the understanding that if I want my dreams to come true, then I must always persevere until the bitter end. And the third is an unforgettable feeling of innocence and gratitude. I am also very grateful of developed close bond with both Japan and Japanese people and I really appreciate their assistance and understanding. Japanese are always being persistence for their dreams and being grateful for what they have and what they get. All these will inspire me further for my work and for my study.



Elementary School Renovation Project

2008 Republic of South Africa

Since 2008, MC has been assisting its subsidiary, Hernic Ferrochrome (Pty) Ltd., with some of its regional contribution activities. These include supports for renovation of a nearby public elementary school and a school for children with impairments and replacement of an aging school bus with wheelchair access. Hernic has been promoting regional contributions as one of its CSR activities and conducting the well-balanced management by taking local residents, partners, stakeholders and employees into consideration. The schools that receive support are located in the areas where Hernic employees live, and the supports for the schools and other educational improvements have been bringing a ray of hope not only to schoolchildren but to families around them, and contributing to improvement of the environment of surrounding communities.

Columbia University's School of International and Public Affairs (SIPA) MC Fellowship Program

2014 United States

In 2014, MC established the MC Fellowship Program through a permanent endowment to support scholarships for exceptional postgraduate students engaged in studies at the Center on Global Policy at Columbia University's School of International and Public Affairs (SIPA). The aim of this Fellowship Program is to nurture future leaders in the development of energy-related policies. Scholarships are provided to graduate students each year, and the endowment ensures that the MC Fellowship Program will continue well into the future.



Ceremony for establishment of MC Fellowship Program in 2014

Picture book school

1991 Japan

Since 1991, MC has been giving children the chance to enjoy picture books by assisting with their production and holding book readings. MC supports *Ohanashi-tai*, a mobile showroom sponsored by Kodansha Ltd. that provides book readings and has picture books that children are free to view. In addition, MC employees volunteer during their lunch breaks to "translate" picture books destined for countries like Cambodia and Laos. The employees affix stickers with the translated copy over each page of the original Japanese language editions.



International Exchange & Contributions

As a global integrated business enterprise, MC must always consider how it can provide long-term benefits to each country and region where it does business. Each MC Office around the world is engaged in a variety of social contribution activities, including those specifically tailored to meet the needs of the local people.

A Bridge Connecting Children in Japan and Kenya

Smile Africa Project



MC has been a supporter of this project since it was initiated by the magazine Sotokoto in 2009. Its purpose is to collect gently used athletic shoes in Japan and send them to children in Africa who are forced to live their lives barefoot. In 2013, a total of 1,000 pairs of shoes were collected at several locations, including the MC FOREST display and exhibition area on the first floor of the Mitsubishi Shoji Building. A photo exhibition was held at MC FOREST to show how the shoes are donated and used. Among the photos were shots of the shoes being collected in Japan, and smiling Kenyan children who had received shoes from Japanese long-distance runner Naoko Takahashi.



Outside of the Visitor Center

Ngorongoro Conservation Area Visitor Center Repair Project



Tanzania's Ngorongoro Conservation Area is a UNESCO World Heritage Site and is considered the crown jewel of Africa's conservation areas. It attracts more than 460,000 visitors annually. In 2009, MC decided to renovate the Visitor Center at the gate entrance, which had not been upgraded since its 1989 construction and was becoming increasingly dilapidated. Our hope was that the remodeled Visitor Center could serve as a new symbol for the conservation area.

Habatake 21 For Children of the Future



MC's Niigata Branch launched this international exchange program by inviting children from Khabarovsk and Vladivostok, Niigata City's Russian sister cities, to come to Niigata in 1992. China and South Korea have since been added to the program, which now connects children from all four countries. A large number of employees take part in this program as volunteers.



In Myoko City



Donating equipment used for rehabilitation

Support of Taipei City Yangming Home for the Disabled



Since 2005, MC has supported the Taipei City Yangming Home for the Disabled, which is run by Taipei City's Department of Social Welfare and is one of the city's largest care facilities for people with intellectual impairments. Every year, we provide the facility with a wide range of assistance, including improvements to the facility itself, donations of nursing care buses and cargo trucks, and equipment purchases.

A Pair of Shoes Can Save a Life

Naoko Takahashi Marathon gold medalist at the Sydney Olympics

I knew there were children who didn't have shoes to wear in different parts of the world before I took part in this Smile Africa project. Although I initially thought that giving them shoes would be enough to put a smile on their faces, I saw how naïve I had been when I actually took a trip to Kenya. So many children suffer from infections from the smallest cuts and grazes they get while playing barefoot. That's when I realized a pair of shoes could save a life. Also, the shoes act as an important bridge for international exchange, in that they connect children from Japan and Kenya. People from MC have donated more than 1,000 pairs of shoes. I hope we can all work together to continue this campaign for many years to come.





Completed solar energy facilities

Solar Power Generation at the Petra World Heritage Site



2011
Jordan

In 2011, MC helped to install solar energy facilities (250kW) at Petra, a UNESCO World Heritage Site. Petra is a large site, spanning 260km², however it previously relied on diesel power generation for electricity, which raised environmental concerns about the gas emissions and noise pollution. Switching from diesel to solar, a cleaner form of energy, will help to preserve this historical and cultural treasure. In September 2012, inverters, modules, and switchboards were installed, and the King of Jordan hosted the completion ceremony.

Rural Development Project in India

Supporting MS Swaminathan Research Foundation



2006
India

In March 2006, MC set up an office in Bhubaneswar, the capital city of East India's Odisha (Orissa) State. This triggered our company's partnership with the MS Swaminathan Research Foundation to support rural development in India. First, MC donated 200 solar-powered streetlights to villages without electricity in Odisha's Koraput District. The installation, which was conducted through the research foundation, helped to develop the local economy and improve safety and security. Since then, MC has provided ongoing support for the region's sustainable development, all the while helping to preserve its nature and culture. These efforts have included the establishment of a human resources development center, agricultural assistance, and the installation of irrigation facilities. In recognition of its contributions, MC was honored with the CSR Leadership Award in 2013. The award was given by the Center for Agriculture and Rural Development, an Indian NGO.



Local people harvesting vegetables



Human Resources Development Center



Farming training

Supporting Independence of Small-Scale Farmers



2009
Brazil

Since 2009, MC has been helping small farming families in an environmentally protected region of the Southern lowlands of Bahia State. This is the first project based on a MOU signed between MC and the Inter-American Development Bank, the aim of which is to promote collaborative CSR activities in Latin America and the Caribbean. Activities are being conducted in partnership with the Odebrecht Foundation in Brazil. MC is assisting technical schools for agriculture, agribusiness and forestry. These schools teach young people the latest techniques in environmentally friendly farming and farm management in order to help them to achieve self-sufficiency.

Mitsubishi Corporation Foundation for the Americas (MCFA)



1991
United States

Mitsubishi Corporation Foundation for the Americas (MCFA) was established in 1991 by Mitsubishi International Corporation (MIC) and MC. The mission of MCFA is to promote environmental causes throughout the Americas, which encompasses environmental education, biodiversity conservation, environmental justice, and sustainable development. Since its establishment, the foundation has contributed a total of 8.6 million dollars (approx. one billion yen) to projects throughout the Americas. Current activities include support for the Amazon Waters Initiative of the Wildlife Conservation Society (WCS) in the Amazon regions of Brazil and Peru, and a program related investment in Root Capital, a non-profit social investment fund that provides financing to high impact agriculture businesses to grow rural prosperity.



Tambopata National Reserve, Peru
©Walter H. Wust Wildlife Conservation Society



Eco tour ©Rainforest Alliance



Harvesting artichokes ©Root Capital

Mitsubishi Corporation Fund for Europe and Africa (MCFEA)



1992
United Kingdom

The Mitsubishi Corporation Fund for Europe and Africa (MCFEA) is a UK registered charitable foundation established in 1992 by Mitsubishi Corporation and Mitsubishi Corporation International (Europe) Plc. Since its inception, the MCFEA has contributed more than 3.6 million GBP (approx. 640 million yen) in grants to environmental and developmental projects in Europe and Africa. These grants have been provided to a range of partner organizations including Earthwatch Institute, SolarAid, Farm Africa, BirdLife International and WaterAid. The latter is an organization with which the MCFEA has had a particularly long-standing relationship, helping to improve health and quality of life by delivering safe water and sanitation to the world's most impoverished people.



Carrying out water quality assessments ©Earthwatch Institute



Gaining access to safe drinking water ©WaterAid



Bird-watching with BirdLife International
©BirdLife International

Culture and Arts

MC is widely engaged in philanthropy related to culture and the arts, including support for museums. One of our more recent activities is a program designed to showcase and support the talents of promising young artists.

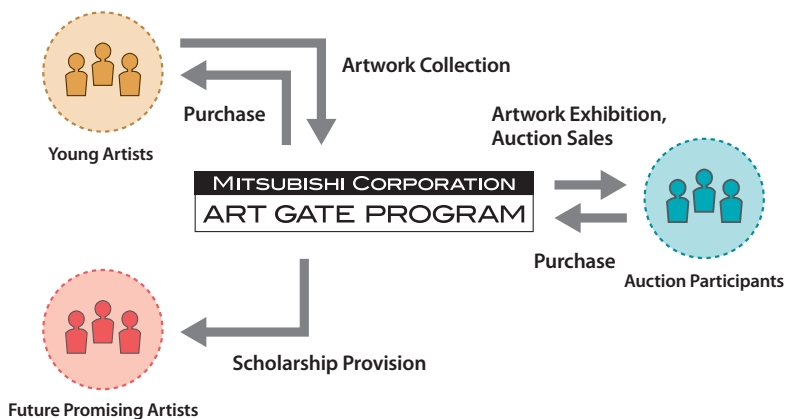
Supporting Artists' Careers with Proceeds from Charity Auctions

Mitsubishi Corporation Art Gate Program



2008
Japan

MC launched the Mitsubishi Corporation Art Gate Program ("MCAGP") in 2008. Its objective is to help promising young people achieve their dreams of becoming professional artists. For fine-art students at Japanese universities, opportunities to exhibit their work are rare. The MCAGP invites young artists who graduated within the last three years to submit their artwork to MC, which purchases around 200 of these works every year each at a set price of 100,000 yen. After exhibiting the works at MC and elsewhere, we sell them through public auctions. The proceeds gained from the auctions fund scholarships for aspiring artists. The 25 exhibitions and charity auctions conducted as of December 2014 have given many artists the chance to showcase their work, and some have even received new orders from collectors. It appears that the MCAGP is indeed living up to its name, and opening the way to successful careers in the world of art.



©Michiko Yamamoto

Classical Music for the First Time



2007
Japan

This project enables junior and senior high school students, who rarely get the chance to listen to classical music live, to enjoy a concert in a genuine music hall. MC has supported this project since its inception in 2007.

West Australia Symphony Orchestra (WASO)



2008
Australia

In 2008, MC became a major corporate sponsor of the internationally acclaimed West Australia Symphony Orchestra (WASO), which is a highly respected representative of the region's cultural and artistic community.



The British Museum's Mitsubishi Corporation Japanese Galleries



2008
United Kingdom

In 2008, MC signed a 10 year agreement with the British Museum to become an exclusive sponsor of the 'Mitsubishi Corporation Japanese Galleries' dedicated to Japanese culture. This is the first time that a company has become the sole sponsor of the Galleries. The Galleries display around 300 items selected from the Museum's collection of approximately 30,000 artefacts. This collection is the most extensive in Europe, ranging from *haniwa* (terracotta clay figures) of the Tumulus period to modern-day manga (comic books). The Galleries provide a glimpse into Japan's past and present, and play an important role in promoting Japanese culture in Europe.

National Bardo Museum



2008
Tunisia

The National Bardo Museum is home to many archaeological treasures, including historical articles and mosaic works unearthed from ancient Roman and Greek remains, and from the Archaeological Site of Carthage, a UNESCO World Heritage Site. MC's previous donations include 2 vehicles, computers, large-screen displays, and audio-visual equipment, all of which have helped to enhance visitors' and researchers' experiences at the Museum.



An Important Foothold for Activities as Artists

Naeko Inoue 2009 Mitsubishi Corporation Art Gate Program Scholarship Recipient

When I was a student, I was selected as one of the inaugural recipients of the Mitsubishi Corporation Art Gate Program scholarship. Thanks to the scholarship, I was able to dedicate my time to my academic work without having to worry about how I was going to pay for school or my art supplies. I also met a number of customers and artists at a charity auction, which inspired me to produce my own work and think more deeply about the arts. After I graduated, I worked as an assistant educational researcher at Tokyo University of the Arts for three years. I'm now employed as a part-time instructor, and I continue to produce my own work. Thanks to the Mitsubishi Corporation Art Gate Program, I have the chance to exhibit my work several times a year and am enjoying a fulfilling life as an artist. I am truly grateful for what this program did for me.



Great East Japan Earthquake Relief and Recovery Activities

MC began assisting with relief and recovery efforts immediately after the Great East Japan Earthquake and tsunami struck the Tohoku region in March 2011. In addition to providing scholarships and support recovery grants, we are helping to revive industry and create jobs.

Together, Moving Forward. Together, Into the Future.

Scholarships

To date, MC has provided scholarships to 3,695 students who would otherwise have been incapable of continuing their studies due to the disaster.

Support Recovery Grants

MC provides subsidies to NPOs, social welfare corporations and others involved in the relief and recovery efforts in affected areas. We have awarded grants to 232 organizations through an open application process..

Other Types of Support Provided

MC is helping the recovery in various other ways as well. We have been supplying goods and equipment directly to the affected areas, and making donations to support other activities aimed at those in need.

- Donation of mobile hair salon to the affected areas
- Free loan of offshore fueling facility
- Support of prayer-for-recovery festivals
- Joint hosting of "Friendship Camp" with YMCA of Japan



Capital Hotel 1000 (Rikuzentakata, Iwate Prefecture)



Canyon Works Co., Ltd. (Sewn products manufacturer / Namie Town, Fukushima Prefecture)



Michisaki Co., Ltd. (Large-scale farm / Sendai City, Miyagi Prefecture)



Minamisoma Solar Agripark (On-site training facility, Minamisoma City, Fukushima Prefecture)

Industry Revival and Jobs Creation

Using part of the Mitsubishi Corporation East Japan Earthquake Recovery Fund, in March 2012 MC established the Mitsubishi Corporation Disaster Relief Foundation, which two months later was accredited as a public interest incorporated foundation. Recognizing that industry growth and jobs creation are essential to a full recovery in Tohoku, our foundation is focusing its efforts in those very areas. In addition to helping the region's core industries of fishing and agriculture get back on their feet, we have committed approximately two billion yen in investments and loans to 44 companies.* These companies are active in a number of industries, including seafood processing, hotel reconstruction, daycare, housing and other services for seniors, animal feed, shipbuilding, and on-site training facilities.

*As of January 2015 (14 companies in Iwate Prefecture, 21 in Miyagi Prefecture and nine in Fukushima Prefecture).

Volunteer Activities

Many MC employees were quick to volunteer for the on-the-ground recovery work. Since the disaster, we have continued to send teams of volunteers to the affected areas, and as of December 31, 2014, around 3,529 employees had taken part, including 985 employees from 73 MC Group companies. Our volunteer activities are quite diverse, including the clearing away of mud and debris, set up of farmland, repair of fishing equipment, reopening of closed schools, and assistance with local events.



Placing Value on Why, Not What

Takejiro Sueyoshi Special Advisor, UNEP Finance Initiative
MC's CSR & Environmental Affairs Advisory Committee Member

"Continuity" is one of the key aspects of social contribution activities. Rather than conduct a series of events that are limited in nature, it is better to create a "culture" that consistently grows its social contributions from one generation of employees to the next. In that context, it's important to fully discuss and understand the reasons behind the activities and not simply the activities themselves. MC has clearly been doing just that in its ongoing support for Tohoku. It's an approach that's equally critical in business, and MC has always attracted the kind of people who share the intense curiosity and ambition that lead to success. I am interested to see how MC will apply these terrific qualities to para-sports, something the company has pledged to increase its support for to help mark its 60th anniversary.



Employee Volunteer Activities

At MC, we're taking a number of steps to encourage employees to join our volunteer work. We believe that each and every employee should be fully aware of the importance of giving back to society.

One Volunteer Act Per Year — A Goal for All Employees



Making Picture Books at MC
Volunteers affix stickers with local language translations over the original text in Japanese picture books. The books are then sent to children in Cambodia, Laos and other parts of Asia. This activity has been ongoing since 2005.



Material used to make soft toys

In-house Volunteer Activities

MC runs volunteer programs three to four times a week that employees can participate in during their lunch breaks or for short periods of time after office hours. The programs include adapting picture books for children in Cambodia and Laos by affixing local language translations, making soft toys to aid in the development of children with impairments, collecting used stamps, and making picture postcards for the elderly.

- Making picture books
- Making soft toys
- Producing books in Braille
- Making eco envelopes
- Producing arithmetic material, etc.



Charity Bazaar

MC holds charity bazaars in the entrance hall of the Mitsubishi Shoji Building and the Marunouchi Park Building. At the bazaars, we sell such items as fair trade goods, miscellaneous items, bread, sweets, local specialties and handicrafts from NPOs, NGOs, work assistance agencies for people with impairments, and Tohoku recovery support groups. Employees take part as sales assistants.



Contribute to society just by eating!



TABLE FOR TWO (TFT)

MC supports this program, in which school meals are provided to children in developing countries by purchasing food or drink in the company dining hall or from a vending machine.

Collection Program

MC regularly collects items for donation.

- PET bottle caps (eco caps)
- Used stamps
- Shoes
- Second-hand books and CDs
- Foreign coins
- Used clothes
- Unused prepaid New Year's postcards, New Year's lottery postcards with winning numbers, etc.

【Volunteer Token System】

MC makes donations to public welfare, educational and environmental NPOs based on a virtual token system. Employees earn tokens by participating in volunteer activities, with each token worth a corporate donation of 500 yen. Tokens are not only awarded for volunteer work organized by MC, but also for activities undertaken independently by employees during their private time outside of work.

【Volunteer Card Program】

Stickers are given to employees who participate in volunteer activities that the company supports. The employees put the stickers on special cards, and when they have filled their cards, they submit them to the volunteer office. Based on the number of cards submitted, the office donates a certain amount of money to needy children around the world.

【Volunteer Leave System】

Employees can take up to five days leave each year to participate in volunteer activities. Many employees use the system to take part in such programs as the Friendship Camp for Mothers and Children, Experimental Project in Tropical Forest Regeneration, Global Coral Reef Conservation Project, or Relief and Recovery activities in Tohoku.

Creating Opportunities to Deepen Mutual Understanding

Toshiyuki Nagashima Actor

My associations with MC have been mainly through my booth at the Aozora market charity bazaar and events dedicated to Tohoku's recovery. I believe that there's always room for dialogue between producers and consumers, and that's what I'm trying to encourage through the Aozora market. My work there is intended to bring both sides together and help deepen their understanding for one another, and in my opinion, the spirit of connecting people applies to MC's CSR activities as well. In a very real sense, it has become a cornerstone of the company. I'm excited about my future collaborations with MC, and I look forward to seeing where they will take us.



MC FOREST

The Mitsubishi Corporation CSR Station "MC FOREST" showcases MC's activities, including its environment and social contributions.

Welcome to "MC FOREST"



Forest Coaster

The Forest Coaster is a unique, wooden apparatus that's designed to teach visitors about the beauty and benefits of our woodlands, and explain how they are created. Each time a visitor runs a ball through the Forest Coaster, MC plants a tree somewhere in the world.



Coral Display

Visitors have the opportunity to observe a live coral ecosystem.



MC Global Action

Visitors can learn all about MC's global business and social contributions through a large wall-mounted monitor that's linked to a table-style touchscreen.



Tangible Earth

This hand-manipulated digital globe teaches visitors about global warming, typhoons and tsunamis, the migratory patterns of birds, and more.



History Vision

A timeline on the wall provides an overview of MC's history, from the company's founding through to modern times. Visitors can learn more about each event through interactive tablets.

Seminars and Workshops

MC employees host a variety of seminars and events in cooperation with NGOs, NPOs, and researchers that do work for good causes. These include efforts to address environmental issues, social contribution activities, support for para-sports, and more.

- Japan Committee "Vaccines for the World's Children" (JVC) – Activity Report • Study the science behind Japan's beautiful mountains • Learn about the golden eagle, an endangered species
- Protect marine life through the choices you make • Ekilooto of Uganda - Born with HIV
- A look at Thailand today, through NGO activities • And more!



MC FOREST SCHOOL

Since August 2013, MC FOREST SCHOOL has held special events for elementary school students to assist with their summer vacation research projects. Some of the seminars and workshops are even led by MC employees. In 2014, MC began opening the school during the spring vacation period as well.

- "Concert for Everyone" – Classical music for all ages, from infants to the elderly • Become an expert in insects (science) • The wonders of coral (environment) • Experience wheelchair basketball (physical education) • Let's make eco-bags by hand (arts and crafts), etc.



J-WAVE "LOHAS TALK" Public Recording

LOHAS TALK is a J-WAVE radio station program (81.3FM) that's sponsored by MC and enjoyed by all people of all ages. The program is sometimes recorded publicly at MC FOREST and features a variety of guests from interesting and educational fields.



Photo exhibition, "Smile Africa Project"



Moai's Exhibition, "More, More, Moai!"

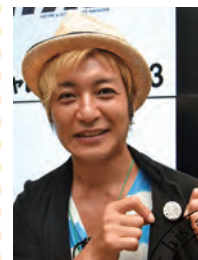
CSR-related Displays

MC frequently hosts photo exhibitions by NGOs and NPOs, along with its own exhibitions on CSR activities. Among the displays featured thus far are MC's work in the Great East Japan Earthquake recovery efforts and its Smile Africa Project.

Enjoying an oasis, right in the heart of the city

Takeshi Tsuruno Actor/musician

I've been fortunate to take part in several projects at MC FOREST. For many, our world is becoming an increasingly convenient place to live, but the flipside is that children and their parents have less chance to interact with nature. MC FOREST is an oasis right in the heart of the city, and I applaud MC for coming up with the idea and sticking with it. It is quite significant that a display area like this one is being managed by MC, a company that has always worked hard to improve the quality of life for so many around the world. MC FOREST shows that MC also recognizes the value of our natural environment, and wants others to fully enjoy and appreciate it, with all five senses. The more children who can experience MC FOREST the better, and of course I will be more than happy to cooperate.



Building New Bonds of Friendship Through a Shared Desire to Conserve Our Natural Environment

We planted these trees together with the local citizens, and the atmosphere was always very friendly. I think that can be attributed to the trust-based relationships that MC has built up over the years through its environmental conservation work. Activities like this make you really think about and appreciate our natural world, and they can provide you with some wonderful memories as well.



Fun Interaction with Local Citizens

MC's social contribution programs are very enriching, and I'm grateful we have the opportunity to take part, not only in the tree-planting events, but also in the social interactions with local residents. I met some great children at an elementary school, and I hope to see them again some day.

Experimental Project in Tropical Forest Regeneration

This project aims to accelerate the regrowth of our tropical forests. MC runs an eco-tour that gives employees the chance to both participate in tree planting and observe the project's progress and impact.



Museum and Art Gallery Program

This program is run in cooperation with museums and art galleries, offering people with impairments the opportunity to enjoy private, after-hours exhibitions. Employee volunteers often take part.

Sharing a Wonderful Experience

I was able to take my time looking at all the exhibits, and that makes all the difference. I am so happy that this opportunity is being given to people who find it difficult to view exhibits when it's crowded.

I was a volunteer!

On these pages, we share the feelings of MC Group employees who have taken part in volunteer activities.

It's Like Being Everyone's Favorite Uncle

Those of us with experience raising kids are perfect for this role. I'd like everyone in my generation to experience the spirit of volunteering and the amazing new friendships that come from it.



Friendship Camp for Mothers and Children

This camp is for single mothers and their children. Every year, around 50 employees volunteer.

Gaining Something Special from Every Encounter

I felt energized by those I worked with at the camp, warmth from the people of Yoshizato, and strength from the mothers. As for the children, they reminded me of the innocence and purity of youth.



Mitsubishi Corporation / YMCA Friendship Camp

As part of the Great East Japan Earthquake relief and recovery work, MC has been holding a camp for families who were affected by the disaster. To date, the camp has been held more than 50 times and many MC employees have volunteered to help out.

Hoping to Once Again Enjoy the Laughter of Children

What really impressed me was the energy of the children. I'm not sure whether it's because they're normally restricted from playing outside, but they were running around having fun from morning to night. I'd love to see their smiling faces again.

It's Never Too Late!

The first time I volunteered, I realized that it's never too late to start. MC's volunteer work will provide you with real-life experience. You'll learn a lot, and you'll be inspired to rethink a great deal of what you already know.



Great East Japan Earthquake Relief and Recovery

Thus far, about 3,500 employees have assisted with our on-the-ground initiatives.

Providing Whatever Help We Can

I remember an elderly couple who were passing by our worksite. They stopped and bowed deeply to us. It was an emotional moment, because it struck home that no matter how trivial the task, our work was worthwhile and appreciated. Some of our team members actually shed a tear or two.

The Power of Teamwork

In a relay race like this, we rely on teamwork to reach our goal, and as I was running, I realized that this kind of team spirit should be within us at all times. With the support of my colleagues, I hope that my modest contributions can somehow benefit society.



YMCA International Charity Run

This purpose of this charity run is to promote outdoor activities for children with impairments. Every year, a number of volunteers from MC take part as runners or event organizers.

Sharing a Wonderful Experience

I learned that coral ecosystems impact our everyday lives in many ways. I'm looking forward to telling others about my experience, and doing my part to spread awareness about these precious organisms.



Global Coral Reef Conservation Project

This research project aims to conserve coral reefs. MC employees take part as volunteers in supporting investigative and research-based activities.

Helping to Preserve Memorable Marine Habitats

I had already been to many of the world's coral reefs, including those in Cancun, the Great Barrier Reef, and Palau. I was distressed when I heard how these beautiful marine habitats are being destroyed, so the chance to participate in this conservation project meant a great deal to me.



In-House Volunteer Activities

MC runs volunteer programs three to four times a week that employees can participate in during their lunch breaks or at other times.

Volunteering During Lunch Breaks

I gladly take part in different volunteer programs during my lunch breaks. It makes me really happy to think that what we're making will be used in so many places.

Evolving into a Cutting-Edge, Society Changing Enterprise

Takeshi Okada Former manager of Japan's national soccer team
MC's CSR & Environmental Affairs Advisory Committee Member

Immediately after the Great East Japan Earthquake, I was called to an emergency meeting of the CSR & Environmental Affairs Advisory Committee. I was surprised that our discussions were not so much focused on quick, temporary support, but rather on activities that could be sustainable over the long term or that would be needed many years down the road. This corporate stance has been conveyed well to MC employees, and when you consider that they're still volunteering today, you can really appreciate the sincerity in MC's approach, and just how committed the company is to bettering society. I applaud MC for all that it has done, and I hope that it will forever remain a company that prioritizes social welfare. Every time I take part in the Friendship Camp for Mothers and Children, and witness first-hand how proactive MC's people are, I am reminded of the true value of these programs.



Mapping MC's Social Contributions



British Museum's Permanent Japanese Galleries

United Kingdom

In 2008, MC began a ten-year agreement with the British Museum under which it is the exclusive sponsor of the museum's permanent Japanese galleries. This initiative is helping to introduce more Europeans to Japanese culture and strengthen their relations with Japan.



Rural Development Project in India

India

Since 2006, MC has been assisting the MS Swaminathan Research Foundation in its efforts to help small ethnic communities become economically independent.



Biological Model Forest with China Green Foundation

China

In 2005, MC began planting trees to help preserve the natural environment and boost economic development in impoverished areas.



Mitsubishi Corporation Foundation for the Americas (MCFA) Americas

Established in 1991, this foundation helps to promote environmental causes throughout the Americas.

• Wildlife Conservation Society (WCS) • Root Capital, etc.



National Bardo Museum

Tunisia

Since 2008, MC has made a number of donations to this museum, including a truck, computers, and audio-visual equipment.



Solar Power Generation at Petra

Jordan

In 2011, MC began lending its assistance to solar energy installations at Petra, a UNESCO World Heritage site.



Taipei City Yangming Home for the Disabled

Taiwan

MC has been providing ongoing assistance to the Yangming Home since 2005. This facility is dedicated to caring for people with intellectual impairments.



Experimental Project in Tropical Forest Regeneration

Malaysia, Brazil, Kenya and Indonesia

Launched in 1990, this project aims to quickly regenerate tropical forests through the intensive mixed planting of native tree species.



Columbia University School of International and Public Affairs (SIPA) MC Fellowship Program

United States

In 2014, MC established this Fellowship Program to help nurture tomorrow's leaders.



Ngorongoro Conservation Area, construction of Visitor reception Center Project

Tanzania

In 2009, MC constructed a new Visitor Reception Center at this World Heritage conservation area.



Elementary School Repair Project

South Africa

In 2008, MC and Hercul Ferrochrome performed maintenance and repair work on an elementary school located not far from Hercul's operations.



Mitsubishi Corporation Fund for Europe and Africa (MCFEA)

Europe, Africa

Established in 1992, this fund contributes to environmental conservation, environmental education, poverty eradication and other good causes through various organizations.

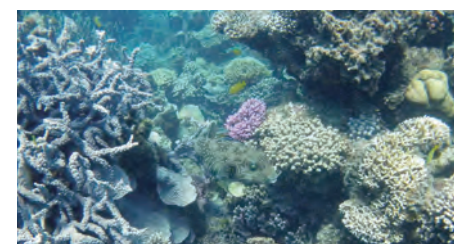
• Earthwatch Institute • SolarAid • Farm Africa • BirdLife International • WaterAid, etc.



West Australia Symphony Orchestra (WASO)

Australia

In 2008, MC became a major corporate sponsor of the internationally acclaimed West Australia Symphony Orchestra (WASO), which is a highly respected representative of the region's cultural and artistic community.



Global Coral Reef Conservation Project

Okinawa, Seychelles, Australia

Since 2005, MC has been developing diverse research on coral reef conservation in all three of these locations.



Young Rural Entrepreneurs Educational Project

Brazil

Since 2009, MC has been supporting agricultural technical schools where young people from local communities learn the latest and environmentally friendly farming techniques.

*Excluding Japan



Global Environment

Public Welfare

Education



Culture and Arts



International Exchange & Contributions

Facts & Figures

These pages present a by-the-numbers look at MC's social contributions.

No. of tokens

73,290

(as of December 31, 2014)



MC makes donations to public welfare, educational and environmental NPOs, and foundations based on a virtual token system. Employees earn tokens by participating in volunteer activities, with each token worth a corporate donation of 500 yen.

Volunteer Cards

9,194

(as of December 31, 2014)



MC distributes special volunteer cards to its employees. Each time an employee participates in an MC-sponsored volunteer activity, he or she is given a sticker to add to the card. Once the cards are filled, the employees return them to MC. Every year, MC counts the number of cards collected and donates a corresponding sum to various NPOs, foundations, and other organizations.

No. of Students Granted Scholarships



10,815

(as of December 31, 2014)

MC International Scholarship

5,821

(as of December 31, 2014)

MC's International Scholarship for Studies in Japan

1,007

(as of December 31, 2014)

Provision of Scholarship

3,695

(as of December 31, 2014)

Mitsubishi Corporation Art Gate Program Scholarships

76

(as of August 31, 2014)

Darunee Scholarship*

216

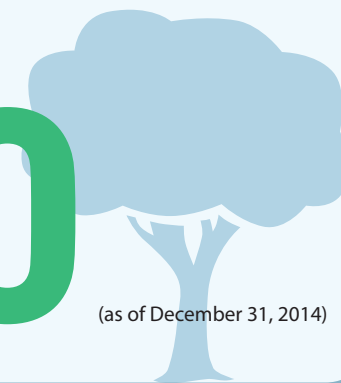
(as of March 31, 2014)

*MC grants these scholarships through the Education for Development Foundation Japan by way of donations from volunteer cards.

No. of Trees Planted in Tropical Forests

1,139,620

(as of December 31, 2014)



No. of Participants in Museum and Art Gallery Program



11,109

(as of January 31, 2015)

No. of Visitors to MC FOREST

76,425

(as of December 31, 2014)



TABLE FOR TWO Donations

150,103 meals

(as of December 31, 2014)



No. of Pairs of Shoes Collected for Smile Africa Project

1,370

(as of January 31, 2015)



No. of Vaccines Donated Through PET Bottle Caps and Volunteer Cards

99,149

(as of December 31, 2014)



No. of Translated Picture Books Donated



20,220

(as of December 31, 2014)

No. of Works Purchased Through Mitsubishi Corporation Art Gate Program

1,443

(as of January 31, 2015)



No. of Participants in Friendship Camp for Mothers and Children

16,845

mothers
and
children

942

MC
volunteers

(as of December 31, 2014)



No. of Countries and Regions Where MC Has Engaged in Social Contributions to Date

80

(as of December 31, 2014)



MC's Social Contribution History

SINCE 1974

[Project 1: Life] Artificial Organ Research & Development

MC's first project, "Life," involved research into the "improvement and development of artificial organs." By the 1970s, not much progress had been made in this area. For example, artificial lungs used in heart surgeries were only effective for up to two hours, making them useless for longer, more complicated operations. In 1974, MC established the Japan Artificial Organ R&D Laboratory and, together with the world-class Cleveland Clinic in the US, began looking for ways to improve these life-saving technologies. Four years later, MC succeeded in developing a treatment called extracorporeal membrane oxygenation (ECMO), that enabled open-heart surgery of seven to eight hours to be conducted safely. This was a real breakthrough at the time.

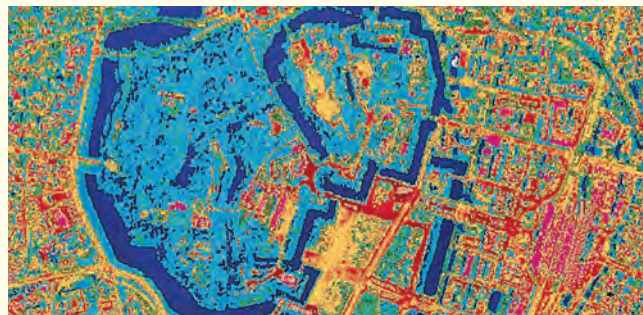
MC funded the treatment's development, which took place at the Cleveland Clinic's Department of Artificial Organs. Although the ensuing patent essentially belonged to MC, we donated it to the Japan Foundation for Artificial Organs, an incorporated foundation established in the US. The foundation then granted medical device manufacturers around the world permission to use the ECMO patent. The usage fees went towards promoting further research and development of artificial organs.



⇒ The "Life" Project concluded in March 1979

[Project 2: Environment] Remote Sensing

MC's second project, "Environment," was aimed at preserving the natural environment and our planet's limited resources. It focused on researching and developing remote sensing technologies. Remote sensing hit the spotlight in 1972, when the US launched "Landsat," the world's first earth-observing satellite. Landsat made it possible to study our world using data from space. Topographically, Japan is very different from the US. The country's elongated shape and the fact that it's surrounded by mountains meant that it would need its own, original remote sensing technologies. So in July 1975, MC established the Remote Sensing Technology Center of Japan in conjunction with Mitsui & Co., the Science and Technology Agency, and others. The new center worked on developing aircraft-mounted remote sensing technologies that would suit Japan's unique topography. On August 7, 1977, Hokkaido's Mt. Usu erupted, causing a shift in the earth's crust and sending huge plumes of volcanic ash into the air. The resulting damage was catastrophic. Houses were crushed and roads were severed. MC monitored the eruption in real time, using the center's new airborne remote sensing technology. The data gathered proved to be instrumental in predicting future eruptions and



devising disaster countermeasures. The same technology has also been used in other research, covering currents in Lake Biwa, Shiga Prefecture, environmental concerns in Tokyo, pollution and flood countermeasures in line with development of the Tama River drainage basin, geothermal resources in the southern Kyushu region, and river-water flowing into Toyama Bay. Made public via the academic community and other channels, the findings from this research have been extremely useful.

⇒ The "Environment" Project concluded in March 1988

MC started three projects in 1974 under the themes "Life," "Environment," and "Human Connection." These were joined by a fourth project, "Public Welfare," in 1979. All four initiatives were underpinned by MC's belief that businesses must bear the

social cost of their operations. Whether the projects generated revenue or not was unimportant. Their true objectives were to benefit our planet and humankind, and they would ultimately form the model for MC's future CSR activities.

[Project 3: Human Connection] Friendship Camp for Mothers and Children

The Friendship Camp for Mothers and Children was launched in May 1974 as the central activity under MC's third project, "Human Connection." The camp, which continues to this day, provides an opportunity for mothers and children to interact with nature and make new friends.

Around 40 years ago the world was enjoying a period of rapid growth. But amidst this growing prosperity and ceaseless pursuit of economic gain, there were concerns at MC that people might be losing touch with their humanity. The Friendship Camp for Mothers and Children was started to help ensure that future generations would always appreciate the precious balance between nature and humankind, a balance that must be maintained if we are to continue living in truly affluent societies. The camp encourages the children to enjoy nature and stretch their imaginations, while reminding the adults of old-fashioned values that made Japan what it is today, such as living sensibly and appreciating the "homemade" touch.

The three-day camp is for single parents and their children who reside in Tokyo. Its activities all highlight the simplicity of being one with nature, and include vegetable picking, hiking, working with



various plants and flowers, bamboo handicrafts, and campfire building. MC Employees also volunteer as camp councilors, and each year more than 100 mothers and children attend. All participants included, 16,845 people have taken part over the past four decades, with MC having borne all associated costs. The program has been highly acclaimed for its sustainability, themes and employee participation, and in 1990 it won an award from the Minister of Health, Labour and Welfare.

⇒ Thanks to the popularity of this camp, MC's "Human Connection" project remains in effect today.

[Project 4: Public Welfare] Vocational Development for People with Severe Impairments

MC's fourth project, "Public Welfare," focuses on helping people with mental and physical impairments acquire the skills to become more independent and productive members of society.

At MC, we believe that the best society is one where all people can live and work together as equals, regardless of impairments. MC began its efforts to help realize this society in 1979, with a donation of vocational training-use PCs to Beppu City's Japan Sun Industries and the social welfare organization, Tokyo Colony. But our support did not stop there. We also began training people with impairments and helping to develop working environments that would facilitate their growing independence as professional computer programmers. Data processing centers were first established at Japan Sun Industries in 1980, and then two years later at Tokyo Colony. These centers marked the start of full-scale vocational development for people with severe impairments. These were groundbreaking initiatives at the time. Never before had white collar work been viewed as a pathway to social reintegration. In December 1983, MC teamed with Japan Sun to establish Mitsubishi Shoji & Sun Co., Ltd. The joint venture is engaged in a wide array of business, including



digital data processing, multimedia and web contents creation, and on-demand printing. It continues to help people with impairments achieve their own financial independence.

⇒ The "Public Welfare" project remains in effect through Mitsubishi Shoji & Sun

Timeline of MC's 40 Years of Social Contributions

*Excludes activities overseas

Established an **office to oversee social and environmental affairs** (1973)
 Started **Friendship Camp for Mothers and Children** (1974)
 Started research and development into artificial organs (1974)
 Started research and development aid for remote sensing technologies (1975)
 Started Spring Friendship Camp (for children from foster care facilities) (1978)
 Started support for Tokyo Colony (1979)
 Started support for **Japan Sun Industries** (1979)

Established **Mitsubishi Shoji & Sun Co., Ltd.** (1983)

Set up **Global Environment Department** (1990)
 Started **Experimental Project in Tropical Forest Regeneration** (Malaysia) (1990)
 Formulated **basic philosophy regarding social contribution** (1991)
 Set up Social Contribution Committee (1991)
 Established **Mitsubishi International Corporation Foundation (MICEF)** (1991)
 Started **International Scholarship for Studies in Japan** (1991)
 Started support of **Oita International Wheelchair Marathon** (1991)
 Started Experimental Project in Tropical Forest Regeneration (Brazil) (1992)
 Established **The Mitsubishi Corporation Fund for Europe and Africa (MCFEA)** (1992)
 Started support for the theater Art Sphere (1992)
 Started support for John Manjiro Whitfield Commemorative Center for International Exchange (1992)
 Started Habatake 21 for Children of the Future (Niigata) (1992)
 Started Marunouchi Citizens Environment Forum (1993)
 Conducted International Friendship Program (1993-2002)
 Donated to the **Great Hanshin-Awaji Earthquake relief funds** (1995)
 Started issuing environmental report (1996)
 Started support for soccer school for children living in orphanages (J-League) (1996-2001)
 Established the **Environment Department** by merging the office to oversee social and environmental affairs with the Global Environment Department (1997)
 Acquired **ISO 14001** certification at Head Office (1997)
 Dispatched employee volunteers to work as interpreters at the Nagano Paralympic Games (1997)

1973

1980

1990

Tokyo Colony 1979

Tokyo Colony is a social welfare corporation that helps people with impairments become equal, productive members of working society. MC began its association with Tokyo Colony in 1979 by donating PCs for use in vocational training. Since 1993, MC has been providing ongoing assistance in each of Tokyo Colony's three key areas of social independence, namely "Education" (which includes a correspondence course in computers for people with severe impairments), "Employment Support" (which includes job introduction and consulting services), and "Job Assistance" (which includes SOHO* support).

*Small Office – Home Office



Mitsubishi Shoji & Sun Co., Ltd.

1983

Japan Sun Industries was established to assist vocational training centers, so that people with impairments can find employment as programmers and system engineers. MC has continued to support this company since 1979. In 1983, MC teamed up with Japan Sun to establish Mitsubishi Shoji & Sun Co., Ltd. The joint venture employs people with impairments and encourages them to demonstrate and enhance their skills as independent, productive members of society. Its main business is the contracting of digital data processing, multimedia contents creation, and on-demand printing. All aspects of the business, from orders to deliveries, are managed by people with impairments.



The Japan-America Grassroots Summit 1992

The John Manjiro Whitfield Commemorative Center for International Exchange, or CIE, was established in 1992 as public interest corporation. Supported by MC, CIE promotes grassroots exchange between citizens of Japan and the U.S. Its program, The Japan America Grassroots Summit, is being held every year alternately in Japan and the U.S. Its aim is to deepen mutual understanding and to build friendship between people of both countries.



International Friendship Program

Held from 1993 to 2002, this program ran for approximately six months each year. It was designed to encourage ongoing exchanges between foreigners training to become Japanese language teachers at the Japan Foundation Japanese-Language Institute in Saitama City, and volunteers from four Mitsubishi Group companies (MC, the Bank of Tokyo-Mitsubishi, Ltd., Mitsubishi Estate Co., Ltd. and Asahi Glass Co., Ltd.).



Started **MC International Scholarship** system (2000)
 Started F.C. Tokyo/Vegalta Sendai soccer school (2002)
 Started support for Earthwatch Institute (2002)
 Received Grand Prize (Environment Minister Award) for MC's Sustainability Report (2003)
 Started tree-planting eco-tour in the tropical forests of Borneo (2003)

Started **Global Coral Reef Conservation Project**
 Started **Museum and Art Gallery Program**
 Introduced **token system** for tabulating employee volunteer activities

Started Experimental Project in Tropical Forest Regeneration (Kenya)
 Started support for Green Ribbon Running Festival

Established **CSR & Environmental Affairs Advisory Committee** comprising outside experts

Started **Mitsubishi Corporation Art Gate Program**
 Started support for YMCA International Charity Run
 Signed 10-year agreement to sponsor **British Museum's permanent Japanese galleries**

Started forest conservation activities at the **Mitsubishi Corporation Thousand Year Forest** (Yataro's Forest)
 Started support for **Smile Africa Project** (donating shoes)
 Started TABLE FOR TWO social contribution program in the company dining hall

Participated in UN Global Compact
 Formulated Mitsubishi Corporation Environmental Charter
 Started activities at the picture book school

Formulated **Environmental Management System & Environmental Policy**
 Started **Great East Japan Earthquake Relief and Recovery Activities**
 Started forest development activities at woodland dedicated to social contributions by Japan's Forest Agency
 Started Experimental Project in Tropical Forest Regeneration (Indonesia)
 Held International Symposium on Rehabilitation of Tropical Rainforest Ecosystems (Malaysia)
 Provided flood relief in Thailand
 Provided earthquake relief in Turkey
 Provided typhoon relief in the Philippines

Received certification for the Mitsubishi Corporation Disaster Relief Foundation to exist as a public interest incorporated foundation
 Opened **MC FOREST** CSR Station
 Held "Moai: Living for the Future" exhibit as part of Great East Japan Earthquake Relief and Recovery Activities
 Provided flood relief in the Philippines
 Provided hurricane relief in the Americas

Started MC FOREST SCHOOL during Japan's summer vacation
 Held Smile Africa Project photo exhibit to express gratitude for the 1,000 pairs of shoes that were donated
 Provided earthquake relief in Sichuan, China
 Provided typhoon relief in the Philippines

Formulated the Mitsubishi Corporation Social Charter
 Started **DREAM AS ONE** project in support of challenged sports
 Provided relief to areas stricken with Ebola hemorrhagic fever

2000

2005

2006

2007

2008

2009

2010

2011

2012

2013

2014

Received Grand Prize (Environment Minister Award) for MC's Sustainability Report (2003)

At Japan's 7th Environmental Report Awards* in 2003, MC received the Grand Prize (Environment Minister Award) for its Sustainability Report. MC began publishing this report in 1997 to encourage voluntary efforts to conserve the natural environment as part of its business operations. The report was commended not only for publicizing MC's targets and objectives, but also for revealing detailed characteristics of its varied businesses. It was also applauded for fully demonstrating top management's commitment to environmental sustainability.

*These awards have since been renamed the "Environmental Communication Awards"



Tree-Planting Eco-Tour in the Tropical Forests of Borneo 2003

Created in 2003 to raise awareness about environmental conservation, this annual tour takes place in Malaysia, the initial location of MC's Experimental Project in Tropical Forest Regeneration. The tours include visits to the project site and untouched woodlands, opportunities to plant seedlings, and get-togethers with local elementary school students. Many MC employees have also taken part over the years.



CSR & Environmental Affairs Advisory Committee 2007



MC established its ten-member CSR & Environmental Affairs Advisory Committee in 2007. All of the members are well-respected, outside experts with various professional backgrounds. Their job is to provide advice on the MC Group's environmental and CSR activities. The committee convenes regularly, and once a year its members visit frontline operations to learn more about the projects underway.

Mitsubishi Corporation Disaster Relief Foundation 2012

This Foundation was established one year after the Great East Japan Earthquake. It provides emergency scholarships to students whose educations were put on hold due to the disaster and grants to help local businesses recover. The foundation has also teamed up with local banks to promote the growth of industry and create jobs, which are both keys to recovery in the affected areas. In addition to assisting Tohoku's core industries of fishing and agriculture, the foundation is also making efforts to launch new businesses.



Apple farm